



Tenant unaffected by sale

11 CITY COMMERCE CENTRE, SOUTHAMPTON, SO14 3EW

INDUSTRIAL / WAREHOUSE FOR SALE
1,222 SQ FT (113.53 SQ M)



Summary

Freehold Industrial Unit for Sale

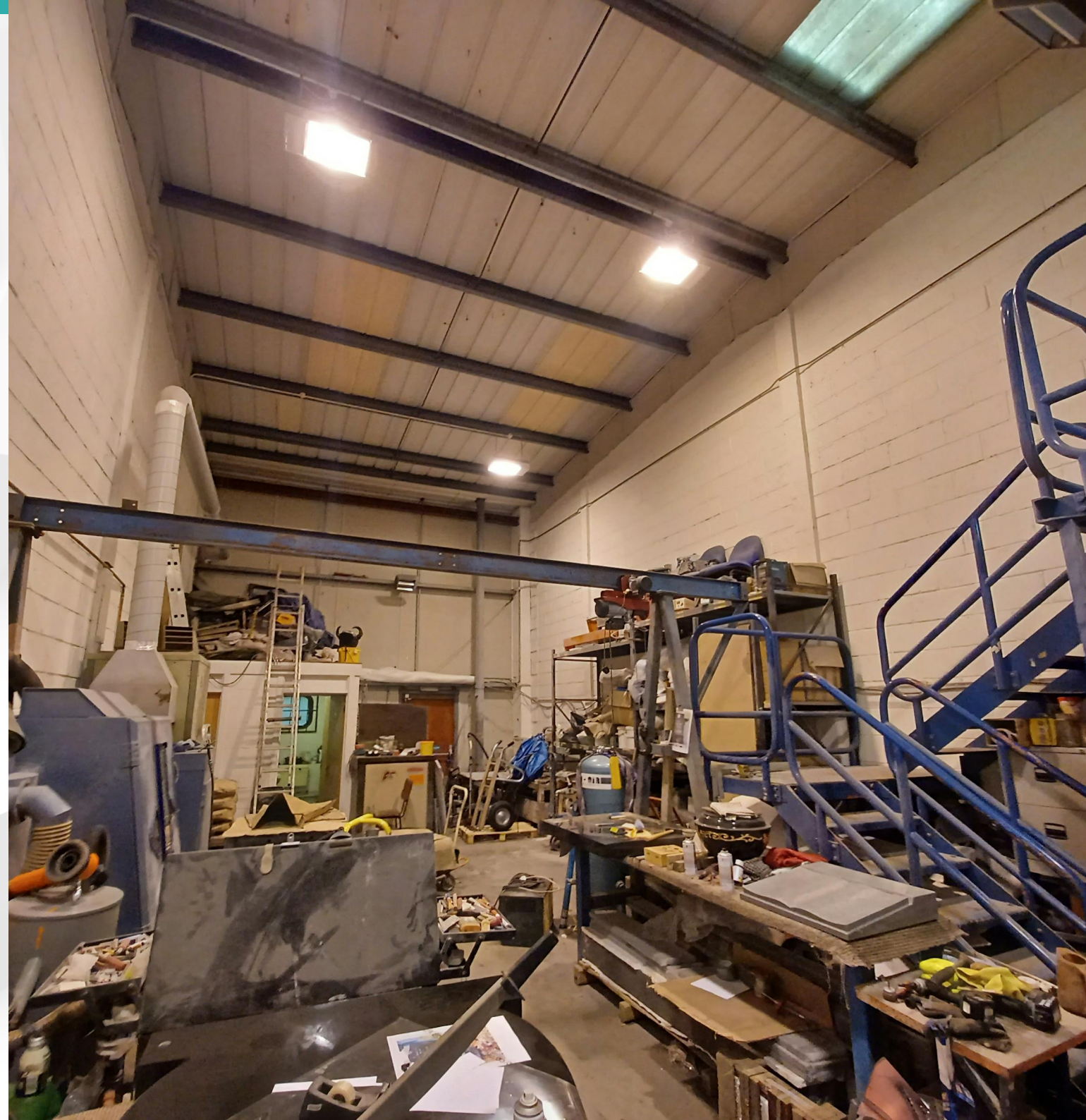
Available Size 1,222 sq ft

Price Price on application

Business Rates Upon Enquiry

EPC Rating Upon enquiry

- Established industrial location
- Mid-terrace industrial unit
- Self contained
- Allocated parking
- 3 phase power
- Office space

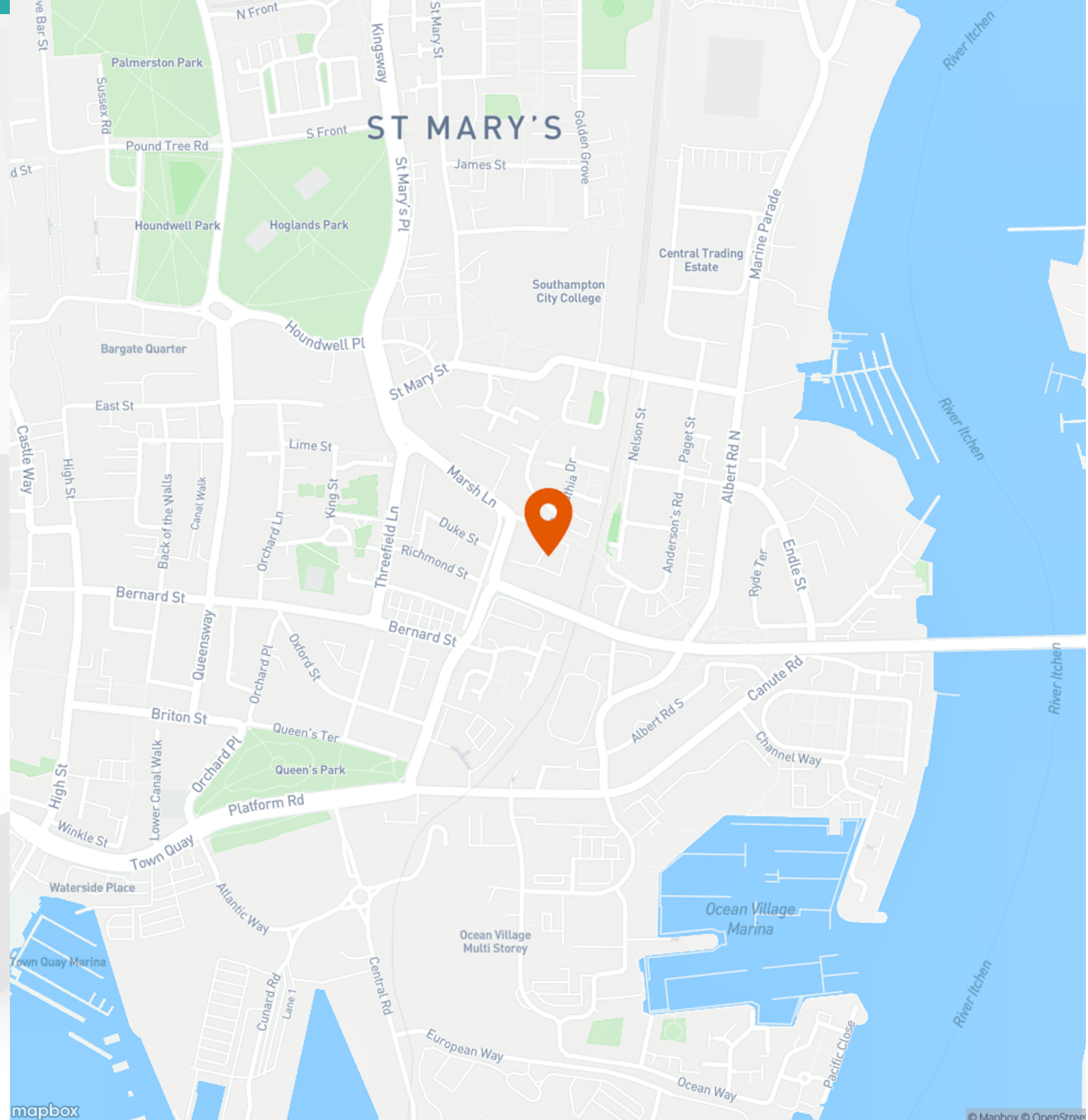


Location



**11 City Commerce Centre,
Marsh Lane, Southampton,
SO14 3EW**

City Commerce Centre is a well established trading estate located in a central position in Southampton. The estate is accessed from the A33 (Marsh Lane) which is one of the main arterial routes running from the north of the city to the south and provides access to the M27 and M3 motorways.



Further Details

Description

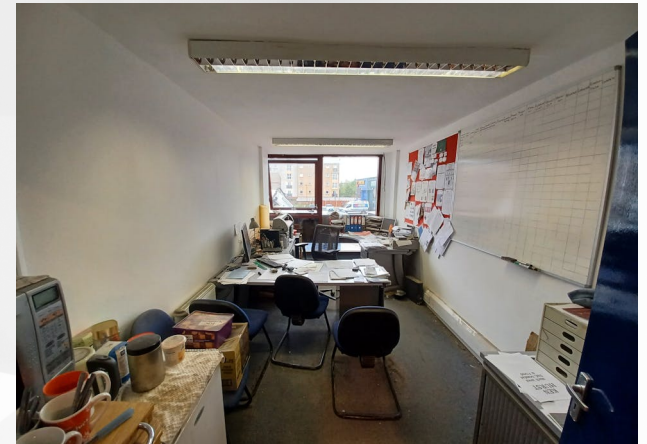
The property comprises a mid-terrace industrial/warehouse with car parking and loading area to the front. The unit is of steel portal frame construction with glazed front elevations beneath a pitched profile metal-clad roof with 15% roof lights. The unit has a ground floor office/reception with workshop area and disabled WC. The first floor offers office accommodation.

Legal Costs

Each party to be responsible for their own legal costs incurred in this transaction.

AML

In accordance with Anti-Money Laundering requirements, two forms of identification will be required from the purchaser or tenant and any beneficial owner together with evidence/proof identifying the source of funds being relied upon to complete the transaction.





Enquiries & Viewings



Oliver Hockley

ohockley@vailwilliams.com

07557 504952



Alex Gauntlett

agauntlett@vailwilliams.com

07584 657826



**Vail
Williams**

View on our website