

# Fife Road, Kingston Upon Thames

Monthly Rental Of £1,400

1 Bedrooms | 1 Bathrooms | 1 Reception

IVY GATE™



## Summary:

Ivy Gate are pleased to present to market this extremely well located one double bedroom apartment to rent. Situated just opposite Kingston train station which offers direct links in to London Waterloo. Newly refurbished throughout and offered furnished, the property comprises; entrance hallway leading to a spacious reception room, open plan modern kitchen, bright and airy double bedroom and a modern shower room. The property further benefits from gas central heating, double glazing and wooden floors throughout. Station Buildings is a very short walk from Kingston town centre offering a wonderful array of shops, bars, cafes, restaurants, banks and supermarkets. Available Now, viewings are highly recommended.

**One Bedroom Apartment**

**Fantastic Central Kingston Location**

**Unfurnished**

**Modern Kitchen & Bathroom**

**Juliette Balcony**

**EPC Rating C**

# Fife Road, Kingston Upon Thames

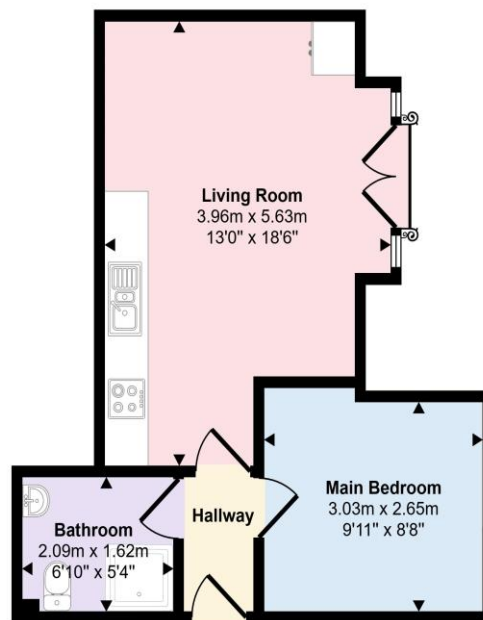
## Monthly Rental Of £1,400

1 Bedrooms | 1 Bathrooms | 1 Reception

IVY GATE™



Approx Gross Internal Area  
34 sq m / 364 sq ft



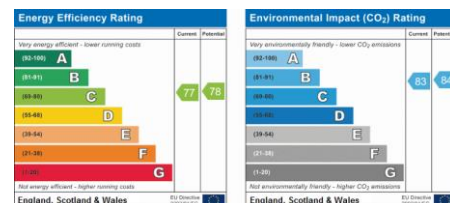
Floorplan

This floorplan is only for illustrative purposes and is not to scale. Measurements of rooms, doors, windows, and any items are approximate and no responsibility is taken for any error, omission or mis-statement. Icons of items such as bathroom suites are representations only and may not look like the real items. Made with Made Snappy 360.

Tenure:

Council Tax: B

Local Authority: Royal Borough of Kingston upon Thames



#### MONEY LAUNDERING REGULATIONS 2003

Intending purchasers will be asked to produce identification and proof of financial status when an offer is received. We would ask for your co-operation in order that there will be no delay in the offer process.

#### THE PROPERTY MISDESCRIPTIONS ACT 1991

The agent has not tested any apparatus, equipment, fixtures and fittings or services and so cannot verify that they are in working order or fit for the purpose. A Buyer is advised to obtain verification from their Solicitor or Surveyor. References to the Tenure of a Property are based on information supplied by the Seller. The Agent has not had sight of the title documents. The mention of any appliances and services within these details does not imply that they are in full and efficient working order. These particulars are intended as a guide and act as information to prospective buyers. They are not an offer or contract, or part of one. All details, areas, measurements floorplans and distances referred to are given as a guide only and should not be relied upon, they are approximate and illustrative only and **not to scale**. Lease details, service charges and ground rent (where applicable) are given as a guide only and the agent has not had sight of the original documentation, they should be checked by your solicitor prior to exchange of contracts.