

Arragon Road, Twickenham

Monthly Rental Of £1,250

1 Bedrooms | 1 Bathrooms | 1 Reception

IVY GATE™



Summary:

Ivy Gate Are proud to present to the market this well proportioned one bedroom raised ground floor studio apartment. Situated in the centre of Twickenham. Having been recently renovated, the property consists of a spacious living room with an open plan modern kitchen with an arched double glazed window, double doors opening on to a large bedroom and a modern shower room. Made up of mainly Victorian houses, Arragon Road is stone throw away from Twickenham Train Station and High street and further benefits of being a 1 minute walk from Waitrose. Available 9th August.

one bedroom Studio flat

Period Conversion

Modern Kitchen & Shower room

Raised Ground Floor

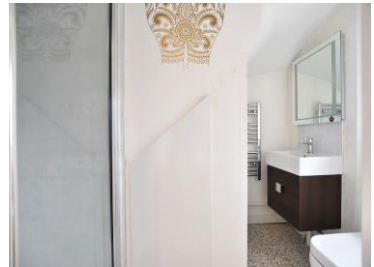
Central Twickenham Location

Unfurnished

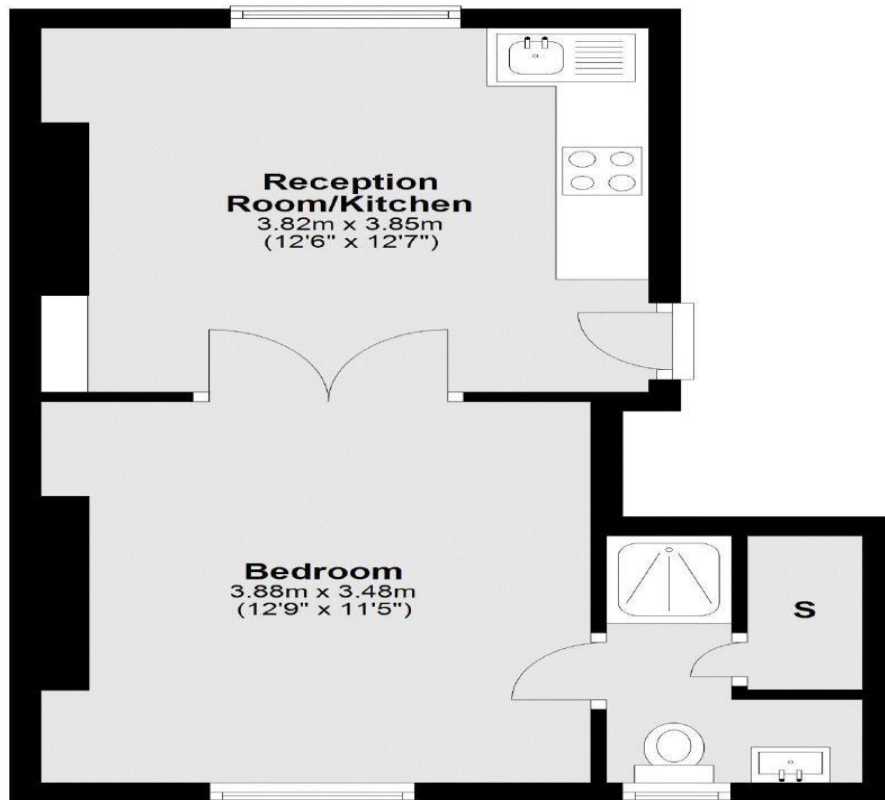
Arragon Road, Twickenham

Monthly Rental Of £1,250

1 Bedrooms | 1 Bathrooms | 1 Reception



Ground Floor



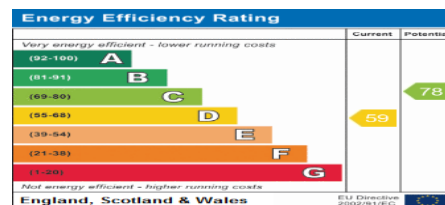
Total area: approx. 33.4 sq. metres (359.5 sq. feet)

Tenure:

Council Tax: C

Local Authority: Richmond

EPC Rating: D



MONEY LAUNDERING REGULATIONS 2003

Intending purchasers will be asked to produce identification and proof of financial status when an offer is received. We would ask for your co-operation in order that there will be no delay in the offer process.

THE PROPERTY MISDESCRIPTIONS ACT 1991

The agent has not tested any apparatus, equipment, fixtures and fittings or services and so cannot verify that they are in working order or fit for the purpose. A Buyer is advised to obtain verification from their Solicitor or Surveyor. References to the Tenure of a Property are based on information supplied by the Seller. The Agent has not had sight of the title documents. The mention of any appliances and services within these details does not imply that they are in full and efficient working order. These particulars are intended as a guide and act as information to prospective buyers. They are not an offer or contract, or part of one. All details, areas, measurements floorplans and distances referred to are given as a guide only and should not be relied upon, they are approximate and illustrative only and **not to scale**. Lease details, service charges and ground rent (where applicable) are given as a guide only and the agent has not had sight of the original documentation, they should be checked by your solicitor prior to exchange of contracts.