

Cumberland House, Kingston Hill, Kingston Upon Thames

Monthly Rental Of £1,600

2 Bedrooms | 1 Bathrooms | 1 Reception

IVY GATE™



Summary:

Ivy Gate are pleased to offer to market this two double bedroom top floor lift serviced apartment located in Kingston, situated moments away from Richmond Park, Norbiton Train Station, excellent local schools and the town centre with its comprehensive shopping facilities and a choice of riverside bars and restaurants. This well presented apartment features a great size living room with direct access to a balcony, separate fully fitted kitchen, modern bathroom and separate wc. Additional features include gas central heating, double glazed windows throughout and residents off street parking. Available now.

Two Double Bedroom Apartment

Separate Fully Fitted Kitchen

Living Room with Balcony

Bathroom & Separate WC

Residents Off Street Parking

Easy Reach of Norbiton Station

Cumberland House, Kingston Hill, Kingston Upon Thames

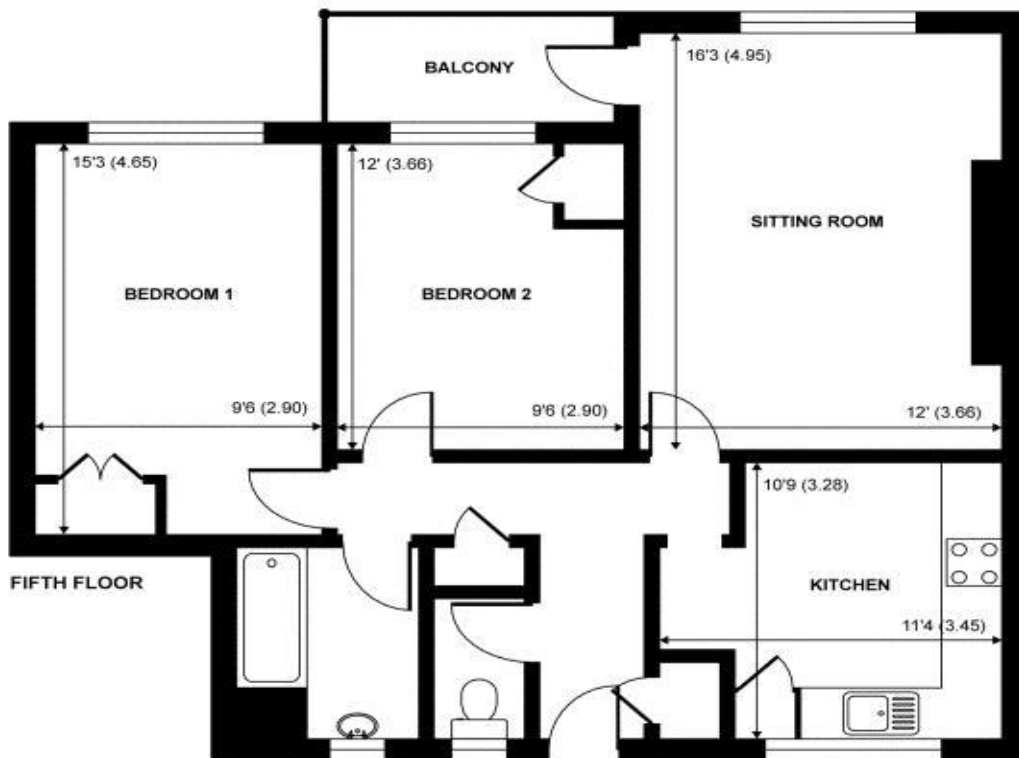
Monthly Rental Of £1,600

IVYGATE™

2 Bedrooms | 1 Bathrooms | 1 Reception



Approximate Area = 732 sq ft / 68 sq m
For identification only - Not to scale



Tenure:

Council Tax: C

Local Authority: Royal Borough of Kingston upon Thames

MONEY LAUNDERING REGULATIONS 2003

Intending purchasers will be asked to produce identification and proof of financial status when an offer is received. We would ask for your co-operation in order that there will be no delay in the offer process.

THE PROPERTY MISDESCRIPTIONS ACT 1991

The agent has not tested any apparatus, equipment, fixtures and fittings or services and so cannot verify that they are in working order or fit for the purpose. A Buyer is advised to obtain verification from their Solicitor or Surveyor. References to the Tenure of a Property are based on information supplied by the Seller. The Agent has not had sight of the title documents. The mention of any appliances and services within these details does not imply that they are in full and efficient working order. These particulars are intended as a guide and act as information to prospective buyers. They are not an offer or contract, or part of one. All details, areas, measurements floorplans and distances referred to are given as a guide only and should not be relied upon, they are approximate and illustrative only and **not to scale**. Lease details, service charges and ground rent (where applicable) are given as a guide only and the agent has not had sight of the original documentation, they should be checked by your solicitor prior to exchange of contracts.