



Beaver Green, West Bridgford, Nottingham, NG2 7QA
£180,000 Leasehold


MARTIN&CO

Beaver Green, West Bridgford

2 Bedrooms, 1 Bathroom

£180,000

- Two Bedroom End Terrace Bungalow
- Modern & Neutral Finish
- Small Complex Of 11 Bungalows
- Residents Parking
- Rear Garden With Patio & Maintenance Included
- No Onward Chain
- Sought After Location

Situated in this quiet complex of just 11 bungalows this two bedroom end terrace bungalow offers a modern and neutral finish throughout and is being offered to the market with no onward chain. Comprising of a hallway, lounge/diner with patio doors to garden, modern fitted kitchen, two bedrooms (master with a range of fitted wardrobes) and a fitted shower room the outside has a garden with patio area and there is residents parking available. Early viewing is strongly recommended.

Score	Energy rating	Current	Potential
92+	A		
81-91	B		90 B
69-80	C	69 C	
55-68	D		
39-54	E		
21-38	F		
1-20	G		



HALLWAY 13' 3" x 2' 11" (4.04m x 0.89m) Accessed via an external door with fitted carpet, airing cupboard, wall mounted radiator, loft hatch and ceiling light.

LOUNGE/DINER 15' 3" x 10' 3" (4.65m x 3.12m) With fitted carpet, sliding patio door to the rear, wall mounted radiator and two ceiling lights.

KITCHEN 10' 8" x 7' 10" (3.25m x 2.39m) With a range of high and low level units with a rolled edge worktop over incorporating a one and quarter bowl stainless steel sink and drainer, splash back tiling, integrated electric oven, inset hob with extractor hood over, washing machine and dishwasher, tiled flooring, uPVC double glazed window to the front elevation and ceiling light.

MASTER BEDROOM 12' 5" x 8' 10" (3.78m x 2.69m) With fitted carpet, a range of fitted wardrobes, uPVC double glazed window to the rear elevation, wall mounted radiator and ceiling light.

BEDROOM TWO 7' 11" x 6' 9" (2.41m x 2.06m) With fitted carpet, uPVC double glazed window to the front elevation, wall mounted radiator and ceiling light.

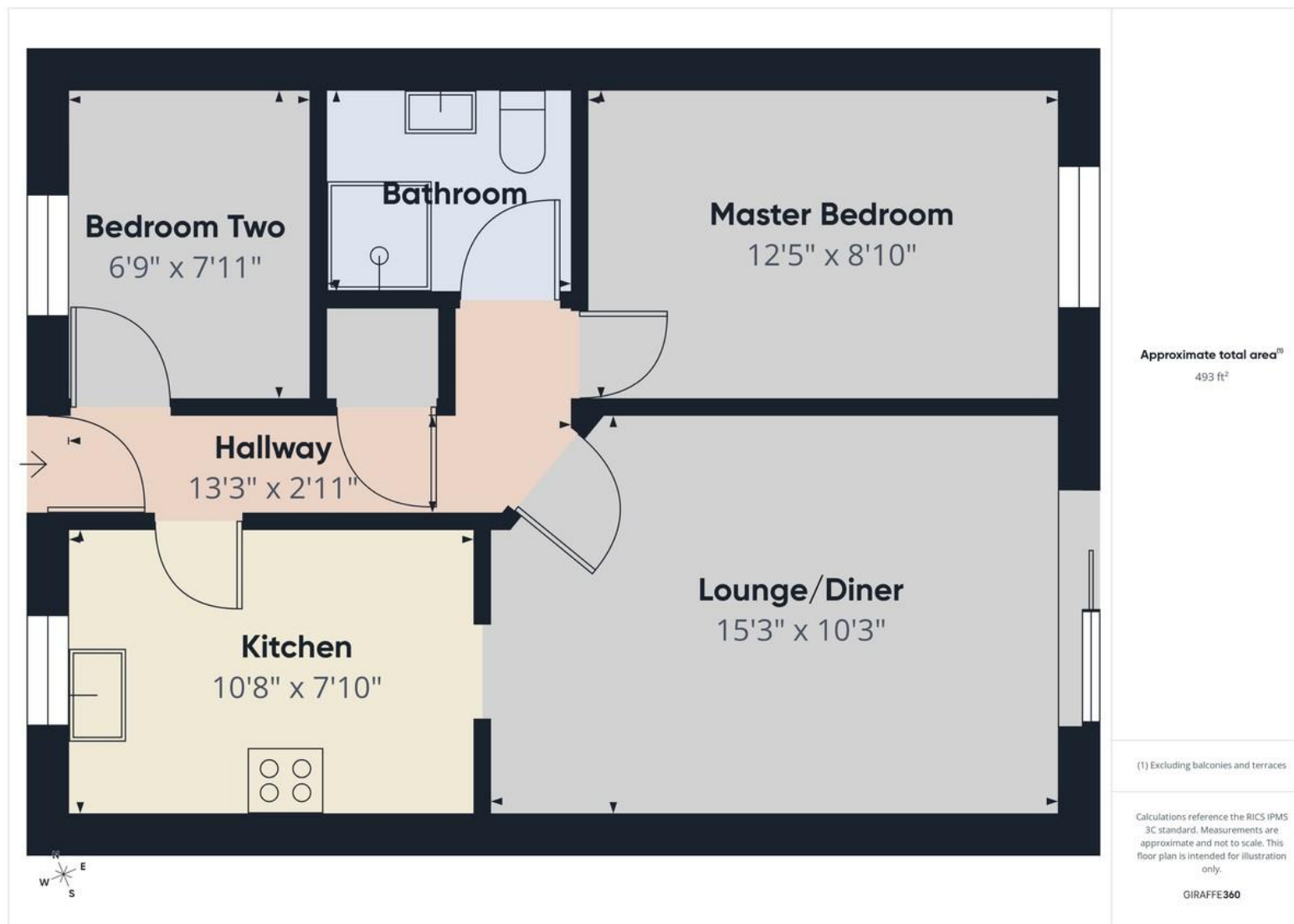
SHOWER ROOM Comprising of a corner shower enclosure with a mains fed mixer bar shower, low flush w.c. and wash hand basin vanity unit, vinyl flooring, part wall tiling, heated towel rail and ceiling light.

EXTERNAL There is a garden to the rear which is laid to lawn with a paved patio area and a small section of fencing to over privacy from the neighbouring garden. To the front is residents parking.









Martin & Co Beeston

23 Wollaton Road • Beeston • Nottingham • NG9 2NG
T: 0115 9225555 • E: beeston@martinco.com

0115 9225555

<http://www.martinco.com>

MARTIN&CO

Accuracy: References to the Tenure of a Property are based on information supplied by the Seller. The Agent has not had sight of the title documents. A Buyer is advised to obtain verification from their Solicitor. Items shown in photographs including but not limited to carpets, fixtures and fittings are not included unless specifically mentioned within the sales particulars. They may however be available by separate negotiation. Buyers must check the availability of any property and make an appointment to view before embarking on any journey to see a property. No person in the employment of the agent has any authority to make any representation about the property, and accordingly any information given is entirely without responsibility on the part of the agents, sellers(s) or lessors(s). Any property particulars are not an offer or contract, nor form part of one. **Sonic / Laser Tape:** Measurements taken using a sonic / laser tape measure may be subject to a small margin of error. **All Measurements:** All Measurements are Approximate. **Services Not tested:** The Agent has not tested any apparatus, equipment, fixtures and fittings or services and so cannot verify that they are in working order or fit for the purpose. A Buyer is advised to obtain verification from their Solicitor or Surveyor.