



A two-story stone house with a tiled roof, featuring a prominent ivy-covered section on the left side. The house has a central entrance with a small porch and a red door. The garden in front is lush with various plants, including lavender, and a path leads to the entrance.

THE RETREAT, STOW-ON-THE-WOLD



A DETACHED MODERN HOME WITH COTTAGE IN A PEACEFUL LOCATION IN TOWN.

Distances Moreton-in-Marsh 4 miles and Kingham 5 miles (trains to London Paddington 76 mins), Burford 7 miles, Cheltenham 20 miles, Cirencester 22 miles, Oxford 25 miles, (Distances and times are approximate).

			EPC
4	3	3	F
			

Local Authority: Cotswold Distret Council, Tax band G

Tenure: Freehold

Services: The property benefits from mains water, electricity and drainage with gas fired central heating. BT broadband.

Fixtures and Fittings: Only those mentioned in these sales particulars are included in the sale.

All others, such as fitted curtains, light fittings, garden ornaments etc., are specifically excluded but may be made available by separate negotiation.

Guide price £1,495,000



LOCATION

Stow-on-the-Wold, widely regarded as one of the most sought-after picturesque North Cotswolds town, blends historic charm with modern living. Once a thriving wool town, its hilltop location offers sweeping countryside views. The vibrant market square features independent shops, cosy pubs, and top-rated restaurants. Education is strong, with excellent local schools including Stow Primary and Kitebrook, plus prestigious nearby institutions like Cheltenham College and Oxford's renowned schools. Ideally positioned between the M40 and M5, Stow offers easy access to London, the Midlands, and the West Country, with fast rail links from Kingham and Moreton-in-Marsh. The area offers exceptional lifestyle opportunities, from Cheltenham Racecourse to premier golf, rugby, festivals, and outdoor pursuits. Stow balances rural beauty with connectivity—perfect for families, commuters, and second-home seekers.











THE RETREAT AND COTTAGE

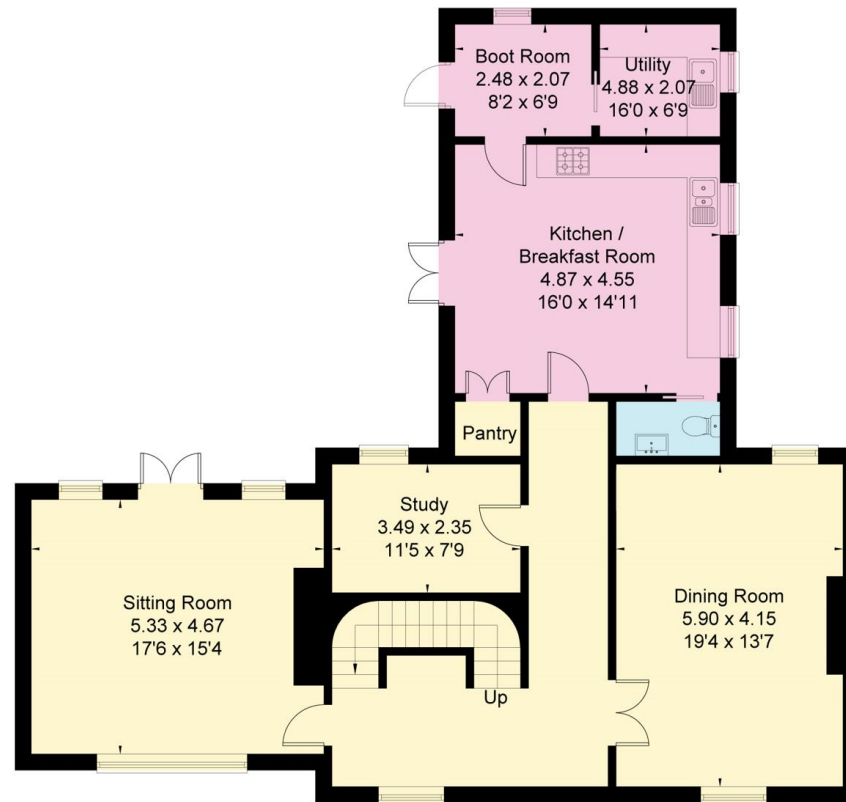
The Retreat is a beautifully appointed Cotswold stone residence, ideally located just a short walk from the lively market square. Offering spacious and flexible accommodation, it comprises a substantial main house and a charming detached cottage—ideal for guests or holiday letting. A welcoming entrance hall with limestone flooring and a sweeping Cotswold stone staircase with ornate wrought iron balustrades sets an elegant tone. The ground floor features generous reception areas, including a spacious sitting room with large fireplace and woodburner and French doors to the terrace, a formal dining room, and a large study. The kitchen/breakfast room, the heart of the home, is fitted with a range of units, tiled flooring, and double doors leading to the garden. It connects to a practical boot room and a separate utility room. Upstairs, the principal bedroom includes an en suite bathroom and walk-in wardrobe. A guest bedroom with en suite, two further bedrooms, and a family bathroom complete the first floor. The detached cottage offers a self-contained living space with a kitchen and lounge downstairs, and a galleried bedroom and bathroom above—perfect for family, guests, or income.

Outside, the property enjoys beautifully maintained gardens on all sides, with a lawned front, spacious terraces, mature trees, and ample off-road parking.

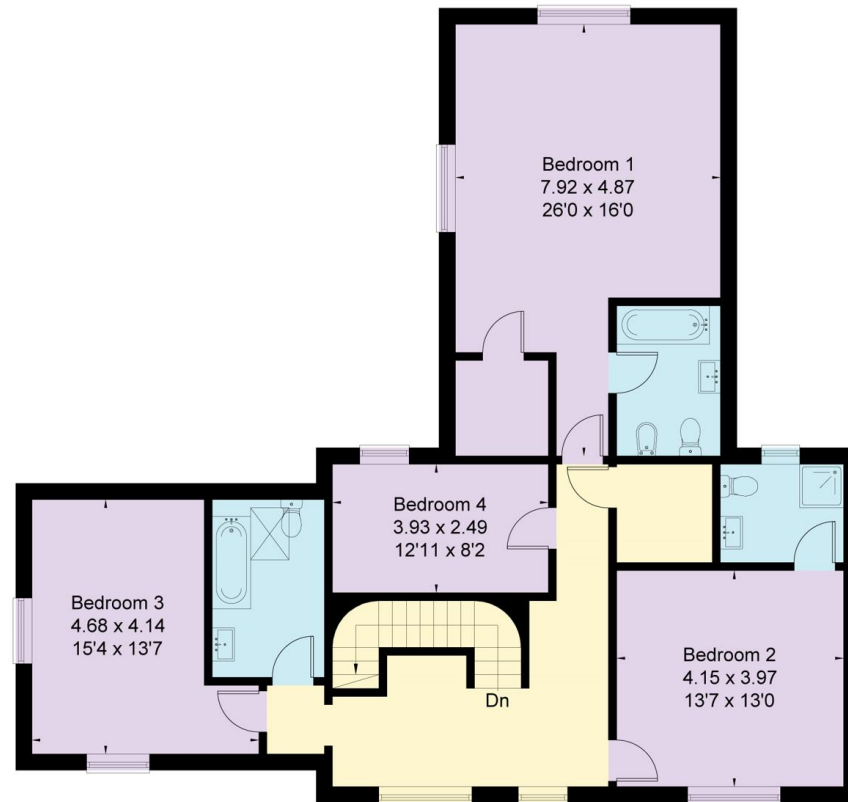




Approximate Floor Area = 240 sq m / 2587 sq ft



Ground Floor



First Floor

This plan is for layout guidance only. Not drawn to scale unless stated. Windows and door openings are approximate. Whilst every care is taken in the preparation of this plan, please check all dimensions, shapes and compass bearings before making any decisions reliant upon them. (ID767266)



Leigh Glazebrook

01451 600613

leigh.glazebrook@knightfrank.com

Stow-on-the-Wold

Brett House, Park Street

GL54 1AG

[knightfrank.co.uk](https://www.knightfrank.co.uk)

Your partners in property

1. Particulars: These particulars are not an offer or contract, nor part of one. You should not rely on statements given by Knight Frank in the particulars, by word of mouth or in writing ("information") as being factually accurate about the property, its condition or its value. Neither Knight Frank nor any joint agent has any authority to make any representations about the property, and accordingly any information given is entirely without responsibility on the part of Knight Frank. 2. Material Information: Please note that the material information is provided to Knight Frank by third parties and is provided here as a guide only. While Knight Frank has taken steps to verify this information, we advise you to confirm the details of any such material information prior to any offer being submitted. If we are informed of changes to this information by the seller or another third party, we will use reasonable endeavours to update this as soon as practical. 3. Photos, Videos etc: The photographs, property videos and virtual viewings etc. show only certain parts of the property as they appeared at the time they were taken. Areas, measurements and distances given are approximate only. 4. Regulations etc: Any reference to alterations to, or use of, any part of the property does not mean that any necessary planning, building regulations or other consent has been obtained. A buyer must find out by inspection or in other ways that these matters have been properly dealt with and that all information is correct. 5. Fixtures and fittings: A list of the fitted carpets, curtains, light fittings and other items fixed to the property which are included in the sale (or may be available by separate negotiation) will be provided by the Seller's Solicitors. 6. VAT: The VAT position relating to the property may change without notice. 7. To find out how we process Personal Data, please refer to our Group Privacy Statement and other notices at <https://www.knightfrank.com/legals/privacy-statement>.

Particulars dated June 2025. Photographs and videos dated June 2025 All information is correct at the time of going to print. Knight Frank is the trading name of Knight Frank LLP Knight Frank LLP is a limited liability partnership registered in England and Wales with registered number OC305934. Our registered office is at 55 Baker Street, London W1U 8AN. We use the term 'partner' to refer to a member of Knight Frank LLP, or an employee or consultant. A list of members names of Knight Frank LLP may be inspected at our registered office. If you do not want us to contact you further about our services then please contact us by either calling 020 3544 0692, email to marketing.help@knightfrank.com or post to our UK Residential Marketing Manager at our registered office (above) providing your name and address.

