



## BARNCROFT

Long Compton, Shipston-on-Stour, Warwickshire

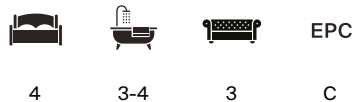






# A BEAUTIFULLY PRESENTED DETACHED STONE-BUILT FAMILY HOME IN A POPULAR COTSWOLD VILLAGE LOCATION

Tucked away in a peaceful and highly desirable Cotswold village, this charming, detached stone-built family home offers elegant living in a truly idyllic setting.



Ground Floor: Sitting room | kitchen | Dining room/Snug | Study | Utility | Cloakroom

First Floor: Four bedrooms | 3 Bathrooms

Double garage with Annexe above

Local Authority: Stratford-upon-Avon District Council 01789 267575

Council Tax band: G

Services: Mains water, electricity, drainage, solar panels, electric car charging.

Tenure: Freehold

Postcode: CV36 5JE

# LOCATION

8 Barncroft is located in the heart of Long Compton, a sought-after Village in South Warwickshire with numerous local facilities. Long Compton boasts a village shop, a new micro restaurant Oxheart, North Cotswold Dairy Shop where you can purchase fresh milk from their vending machine, an excellent public house, The Cotswold Hairdressing company, primary school and church. Walking is outstanding with access to a network of footpaths and bridleways linked to the nearby villages of Whichford, Great Rollright and Little Compton. Additional local shopping facilities can be found in the market towns of Shipston-on-Stour, Moreton-in-Marsh and Chipping Norton including supermarkets and a variety of shops. Daylesford Organic Farm Shop and the Bamford Club is nearby in Kingham, Diddly Squat Farm around a 15 minutes drive and Soho Farmhouse just a 20 minute drive away. Further leisure and more comprehensive shopping facilities can be found in the commercial centres of Cheltenham, Oxford, Stratford-upon-Avon and Banbury. In addition to the village school in Long Compton, there are further state and grammar schools in Stratford, Warwick and Chipping Norton. Private schooling locally includes Bloxham School, Kitebrook, Kingham Hill School, Cheltenham Ladies, Cheltenham College and Dean Close. Sporting and leisure facilities within the locality include equestrian activities, golf at the Wychwood Golf Club, Chipping Norton, Brailes, and Broadway, and racing at Stratford and Cheltenham.

# DISTANCES

Chipping Noton 4 miles, Shipston-on-Stour 5 miles, Banbury Station 14 miles (trains to MaryleBone 1 hour), Morton-in-Marsh 6 miles (London Paddington from 85 minutes), Stratford-upon-Avon 16 (distances and times approximate)











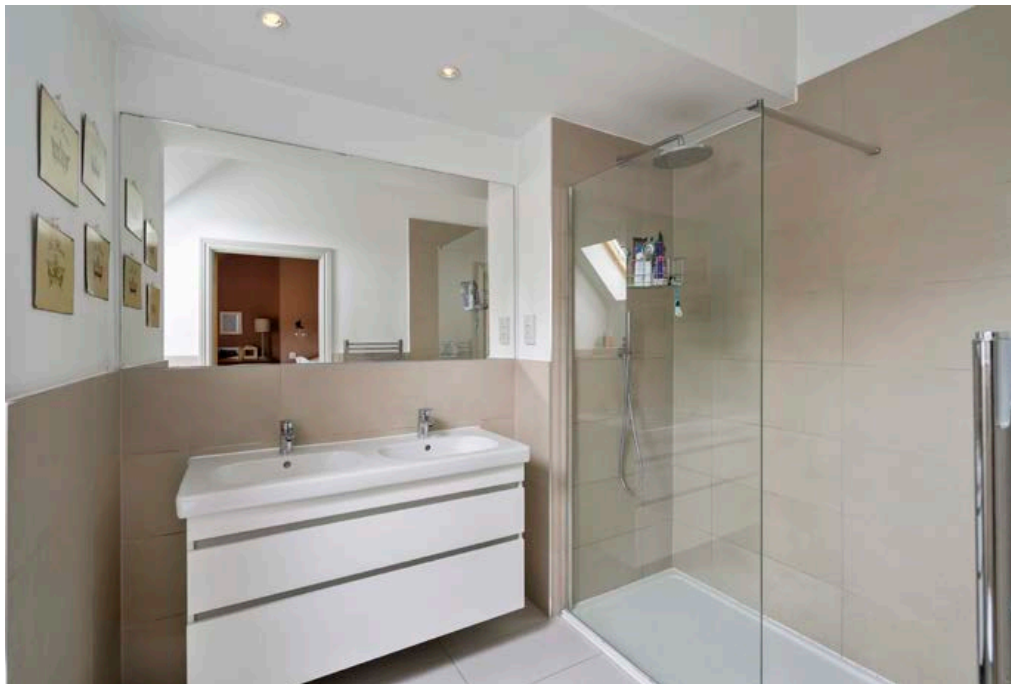




## THE PROPERTY

Tucked away in a peaceful and highly desirable Cotswold village, this charming, detached stone-built family home offers elegant living in a truly idyllic setting. Immaculately presented throughout, the property is surrounded by pretty landscaped gardens that lead gently down to a meandering stream, providing a haven of peace and privacy. The property is approached through a vaulted, double-height entrance hall that floods the home with natural light and creates a welcoming sense of space. At the heart of the home is a stunning open-plan kitchen/family/dining room – perfect for modern living and entertaining, with garden views and direct access to the terrace. There is a useful utility, cloakroom and study. To the rear of the house is a stunning double height dining room/sitting room with log burner and bespoke cabinetry. The bifold doors lead out to the rear terrace. To the first floor are four double bedrooms of which two have en suite shower rooms and a family bathroom.











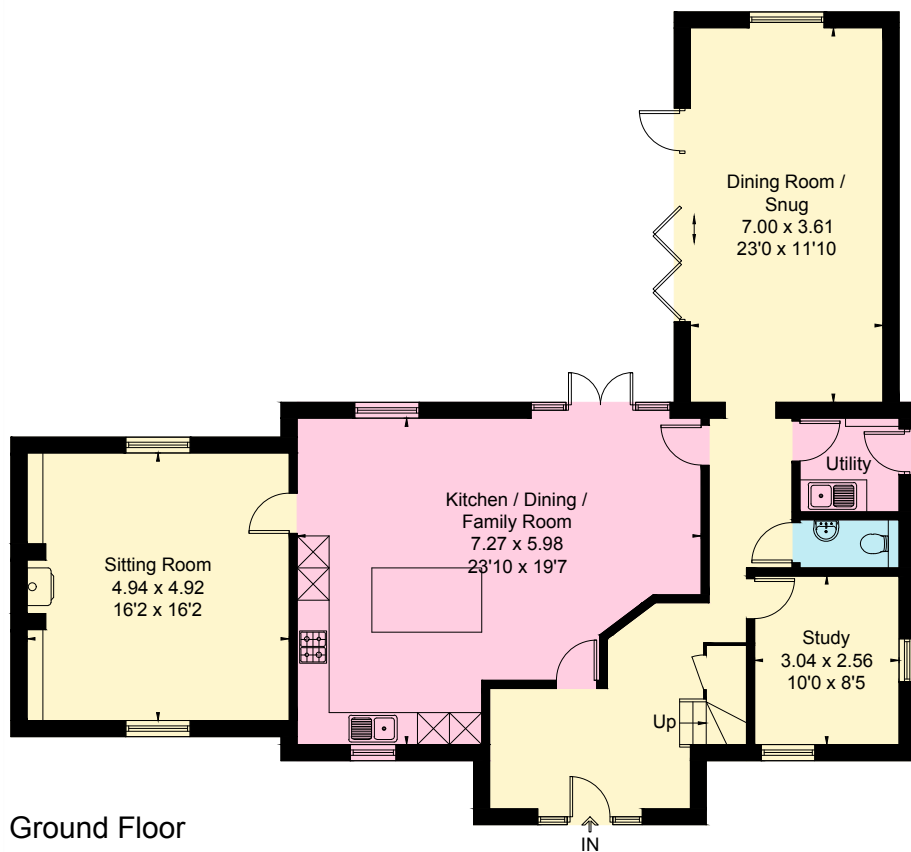


## OUTSIDE

The property is approached over a gravelled driveway with plenty of parking. The gardens are particularly special with well planted borders and raised beds and mature hedging. Mostly laid to lawn, the gardens gently slope down towards a fenced meandering stream. Various seating areas make this garden ideal for al fresco entertaining. Above the detached double garage is a versatile space ideal as a home office. Subject to any necessary planning consents this could provide additional guest accommodation or a holiday letting opportunity.

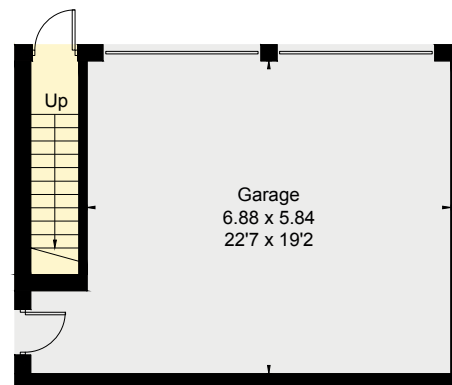




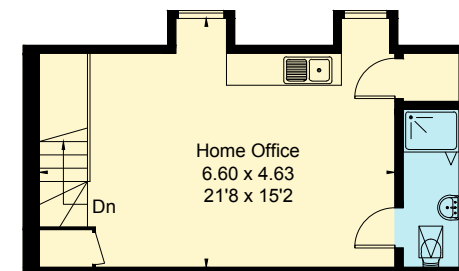


Ground Floor

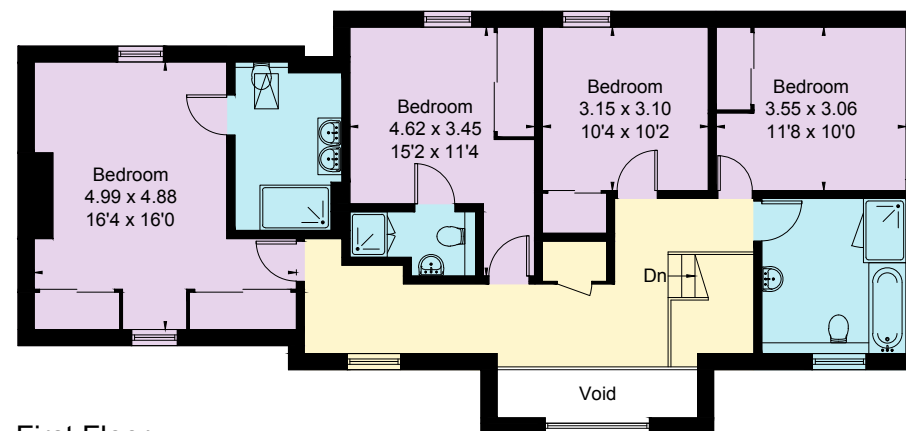
Approximate Floor Area = 220 sq m / 2368 sq ft  
 Outbuildings = 77.8 sq m / 837 sq ft  
 Total = 297.8 sq m / 3205 sq ft (Excluding Void)



Garage - Ground Floor  
 (Not Shown In Actual Location / Orientation)



Garage - First Floor



First Floor

This plan is for layout guidance only. Not drawn to scale unless stated. Windows and door openings are approximate. Whilst every care is taken in the preparation of this plan, please check all dimensions, shapes and compass bearings before making any decisions reliant upon them.



We would be delighted  
to tell you more.

Helen Waddilove  
01451 600617  
helen.waddilove@knightfrank.com

Stow-on-the-Wold  
Brett House, Park Street  
Stow-on-the-Wold GL54 1AG

knightfrank.co.uk

Your partners in property

1. Particulars: These particulars are not an offer or contract, nor part of one. You should not rely on statements given by Knight Frank in the particulars, by word of mouth or in writing ("information") as being factually accurate about the property, its condition or its value. Neither Knight Frank nor any joint agent has any authority to make any representations about the property, and accordingly any information given is entirely without responsibility on the part of Knight Frank. 2. Material Information: Please note that the material information is provided to Knight Frank by third parties and is provided here as a guide only. While Knight Frank has taken steps to verify this information, we advise you to confirm the details of any such material information prior to any offer being submitted. If we are informed of changes to this information by the seller or another third party, we will use reasonable endeavours to update this as soon as practical. 3. Photos, Videos etc: The photographs, property videos and virtual viewings etc. show only certain parts of the property as they appeared at the time they were taken. Areas, measurements and distances given are approximate only. 4. Regulations etc: Any reference to alterations to, or use of, any part of the property does not mean that any necessary planning, building regulations or other consent has been obtained. A buyer must find out by inspection or in other ways that these matters have been properly dealt with and that all information is correct. 5. Fixtures and fittings: A list of the fitted carpets, curtains, light fittings and other items fixed to the property which are included in the sale (or may be available by separate negotiation) will be provided by the Seller's Solicitors. 6. VAT: The VAT position relating to the property may change without notice. 7. To find out how we process Personal Data, please refer to our Group Privacy Statement and other notices at <https://www.knightfrank.com/legals/privacy-statement>.

Particulars dated June 2025. Photographs and videos dated June 2025. All information is correct at the time of going to print. Knight Frank is the trading name of Knight Frank LLP. Knight Frank LLP is a limited liability partnership registered in England and Wales with registered number OC305934. Our registered office is at 55 Baker Street, London W1U 8AN. We use the term 'partner' to refer to a member of Knight Frank LLP, or an employee or consultant. A list of members names of Knight Frank LLP may be inspected at our registered office. If you do not want us to contact you further about our services then please contact us by either calling 020 3544 0692, email to [marketing.help@knightfrank.com](mailto:marketing.help@knightfrank.com) or post to our UK Residential Marketing Manager at our registered office (above) providing your name and address.