

Apartment

Total Area: 49.2 m² ... 529 ft² (excluding balcony)

THE FLOORPLAN IS FOR ILLUSTRATIVE PURPOSES ONLY AND IS NOT TO SCALE.
Measurements and features are approximate and may differ from the actual property. Verify all details independently; no liability is accepted for errors or omissions.

Property marketing provided by www.fotomarketing.co.uk

Energy Efficiency Rating		
	Current	Potential
Very energy efficient - lower running costs		
(92 plus) A		
(81-91) B		
(69-80) C	76	77
(55-68) D		
(39-54) E		
(21-38) F		
(1-20) G		
Not energy efficient - higher running costs		
England & Wales <small>EU Directive 2002/91/EC</small>		

Contact Us:

02072 490272

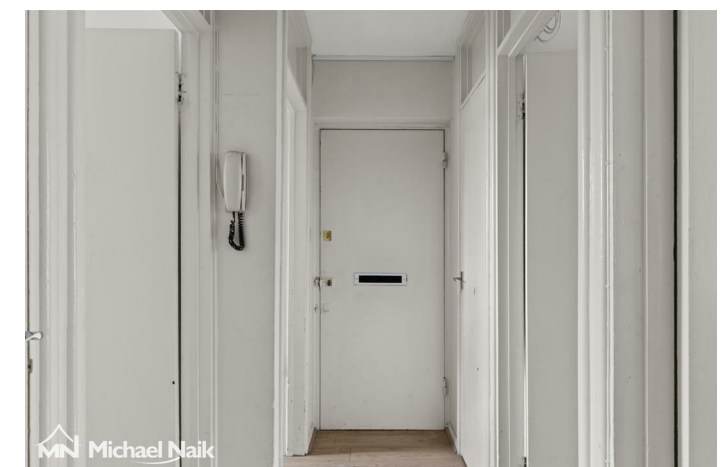
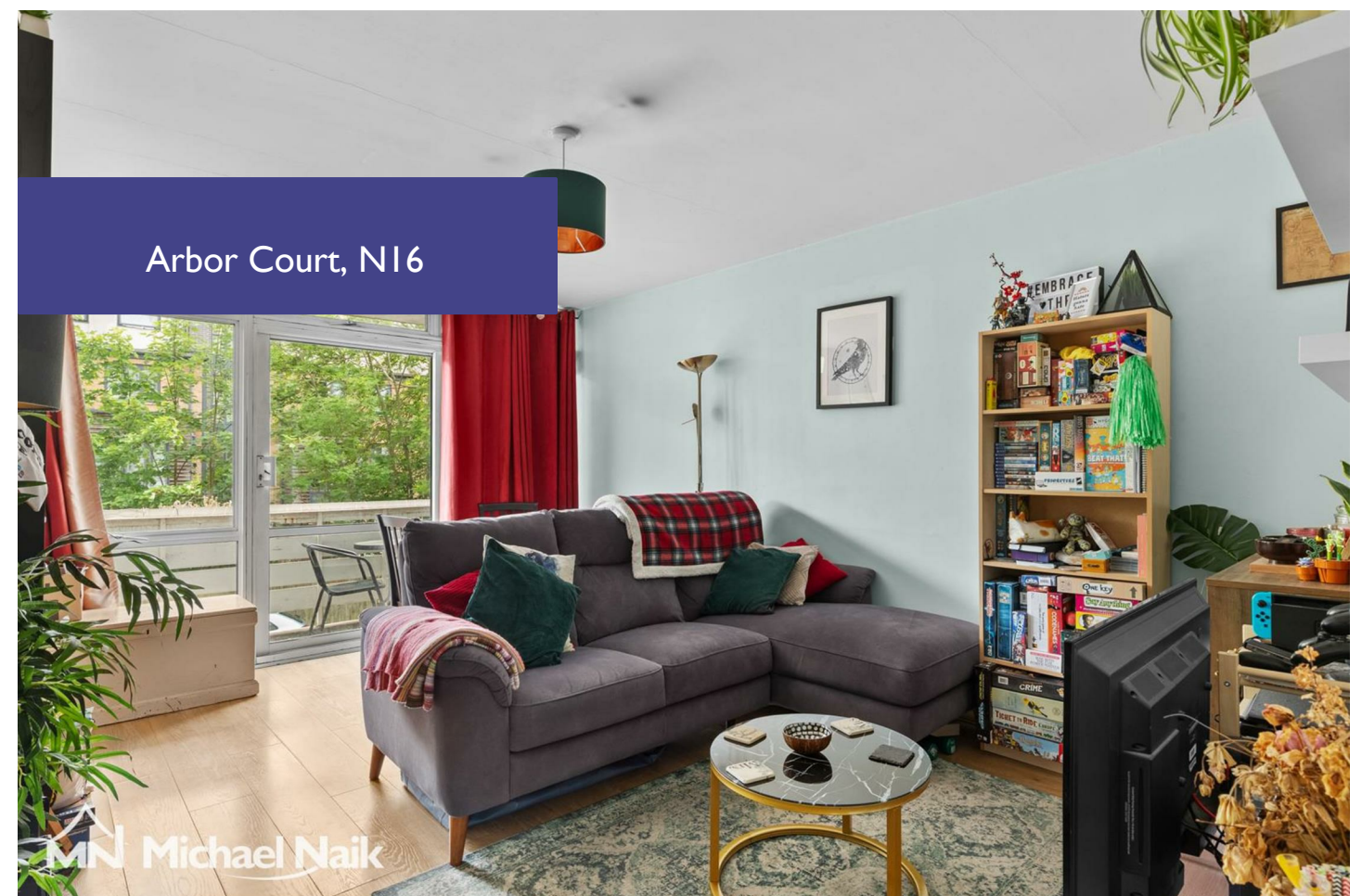
E-mail us:

sales@michaelnaik.com

Visit our website:

www.michaelnaik.com

Agents Note: Whilst every care has been taken to prepare these particulars, they are for guidance purposes only. All measurements are approximate and are for general guidance purposes only and whilst every care has been taken to ensure their accuracy, they should not be relied upon and potential buyers are advised to recheck the measurements.



- Two Bedroom Flat
- Excellent Location
- Private Balcony
- Close to Casson Park
- 529 Sq. Ft
- Available Beginning January

£1,900 PER MONTH



About The Property...

This two bedroom flat is set on the first floor within a private, residential block just moments away from Clissold Park and a short walk from Stoke Newington Church Street which offers a great selection of shops, bars and restaurants. The flat itself benefits from a large reception/diner which leads out onto a private south-facing balcony followed by a separate kitchen, fully fitted shower room and two bedrooms.

Key Information

Available beginning January

Reservation Deposit - £438

Security Deposit - £2,190

Initial Tenancy Term - 12 Months

Council Tax - Hackney - Band C

