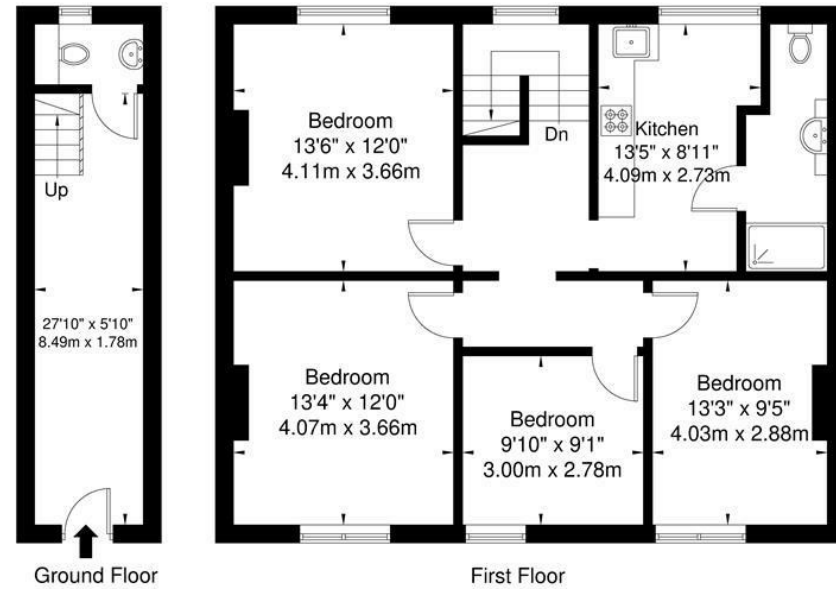


Chalk Farm Road NW1 8AN

Approx. Gross Internal Area = 96.6 sq m / 1039 sq ft



Ground Floor

First Floor

Ref

Copyright **BLEU PLAN**

The Floor plan is not to scale and measurements and areas shown are approximate and therefore should be used for illustrative purposes only. The plan has been prepared in accordance with the RICS code of Measuring Practice and whilst we have confidence in the information produced it must not be relied on. If there is any aspect of particular importance, you should carry out or commission your own inspection of the property.
Copyright @ BLEUPLAN



Chalk Farm Road, NW1



Contact Us:

02072 490272

E-mail us:

sales@michaelnaik.com

Visit our website:

www.michaelnaik.com

| Energy Efficiency Rating | | Current | Potential |
|---|--|-------------------------|-----------|
| Very energy efficient - lower running costs | | | |
| (92 plus) A | | | |
| (81-91) B | | | |
| (69-80) C | | | |
| (55-68) D | | 64 | 70 |
| (39-54) E | | | |
| (21-38) F | | | |
| (1-20) G | | | |
| Not energy efficient - higher running costs | | | |
| England & Wales | | EU Directive 2002/91/EC | |



Agents Note: Whilst every care has been taken to prepare these particulars, they are for guidance purposes only. All measurements are approximate and are for general guidance purposes only and whilst every care has been taken to ensure their accuracy, they should not be relied upon and potential buyers are advised to recheck the measurements.

£2,900 PER MONTH

- Large Three Bedroom Maisonette
- Excellent Location
- Just A Short Walk From Amenities & Transport Links
- Arranged Cover First & Second Floors
- Well Proportioned Bedrooms
- Available Mid-December
- Part Furnished



About The Property...

This large maisonette offers spacious accommodation over two floors whilst benefitting from private ground floor entrance, the property is located just a short walk from Camden Market & Camden Lock, with a wide range of amenities to choose from whilst being well placed for transport links which are just a short walk away.

The property offers a large entrance hallway with ground floor WC, followed by two floors comprising of a kitchen, separate reception/diner, bathroom and three well proportioned bedrooms.

Key Information

Available Mid December, Part-Furnished

Initial Tenancy Term - 12 Months

Reservation Deposit - £669 (forms part of security deposit)

Security Deposit - £3,345

Council Tax - Band D - Camden

