



25 Somerset Road, Meadvale.
Redhill

In Excess of **£475,000**

hm halliwell
marks

Located in the sought-after Meadvale neighbourhood, this stunning two bedroom terraced house offers a unique blend of historical charm and modern comforts. Dating back to the 1890s, the property was once a cobbler's, adding to its character and appeal.

Upon entering, you are greeted by the inviting open plan lounge and dining room, a beautifully designed space that seamlessly combines comfort with functionality. The large open-plan living area is a standout feature of the property, illuminated by natural light streaming in through the bay window. The original wooden flooring adds a touch of warmth, complemented by the striking feature fireplace that serves as a focal point in the room. The property's layout is cleverly designed, with two double bedrooms providing ample space for relaxation and privacy. The spacious landing offers versatility, making it ideal for a dressing room or workspace, catering to the needs of modern living. The house itself is a bit of a 'Tardis', as the rooms are surprisingly more spacious than one would expect, offering plenty of room for residents to personalise and make their own. Stepping outside, you will find a beautifully landscaped garden, providing a tranquil escape from the hustle and bustle of city life. The garden also boasts a convenient home office, perfect for those who require a dedicated workspace or creative retreat. This property is not just a house; it is a home that exudes charm and sophistication. Perfectly blending historic details with modern amenities, this terraced house offers a unique opportunity to own a piece of history in a highly desirable location. Whether you are looking for a cosy retreat or a place to entertain guests, this property offers all the comforts and conveniences you could desire.

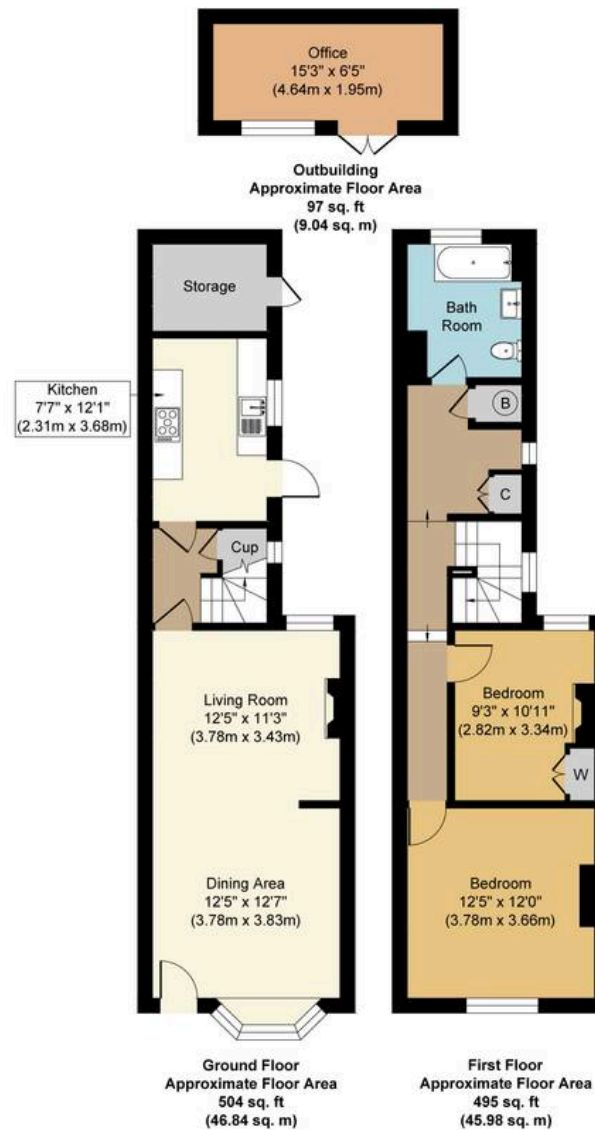
Don't miss out on the chance to make this charming residence your own – schedule a viewing today and experience the timeless allure of this historic gem in Meadvale.

Council Tax band: D Tenure: Freehold

- Sought-after Meadvale Location
- Two Double Bedrooms
- Dating Back To The 1890s
- Beautiful Open Plan, Dual Aspect Lounge And







hm halliwell
marks

Somerset Road, RH1

Approx. Gross Internal Floor Area 1096 sq. ft. (101.86 sq. m)

Whilst every attempt has been made to ensure the accuracy of the floor plan contained here, measurements of doors, windows, rooms and any other items are approximate and no responsibility is taken for any error, omission, or mis-statement. The measurements should not be relied upon for valuation, transaction and/or funding purposes. This plan is for illustrative purposes only and should be used as such by any prospective purchaser or tenant.

The services, systems and appliances shown have not been tested and no guarantee as to their operability or efficiency can be given.

Copyright Property Portraits | www.propertyportraits.co.uk