



2 St. Marys Walk, Bletchingley
Redhill

Guide Price **£495,000**



Presenting a stunning two-bedroom terraced house located in the sought-after village setting of Bletchingley. Tucked away on a small, exclusive development, this beautiful property boasts high-quality finishes and a prime location offering both comfort and convenience.

Upon entering, you are greeted by a well-designed layout that maximises space and natural light. The ground floor features a modern cloakroom/wc, ideal for guests, while the open-plan living area leads seamlessly to the south facing court yard style rear garden.

Ascending the stairs, you will find the master bedroom, a true sanctuary with its own en-suite bathroom, dressing area, fitted wardrobes, and charming views overlooking the park - providing a tranquil retreat within the home.

A second double bedroom would make a great kid's room and also offers flexibility for guests or a home office setup.

Additionally, the property benefits from air conditioning and gas central heating, ensuring year-round comfort.

Outside, a south-facing court-yard style rear garden provides an inviting space for al-fresco dining or simply unwinding after a long day. For added convenience, a garage en-bloc is included for secure parking and storage needs.

Location-wise, this residence is ideally situated amidst the vibrant Bletchingley Village, surrounded by a plethora of local amenities such as shops, pubs, and restaurants. Commuters will appreciate the proximity to Redhill and Merstham stations, offering direct services to London, as well as easy access to the local bus stop. Furthermore, Junction 6 of the M25 is just a short distance away, enhancing connectivity for those travelling by road.

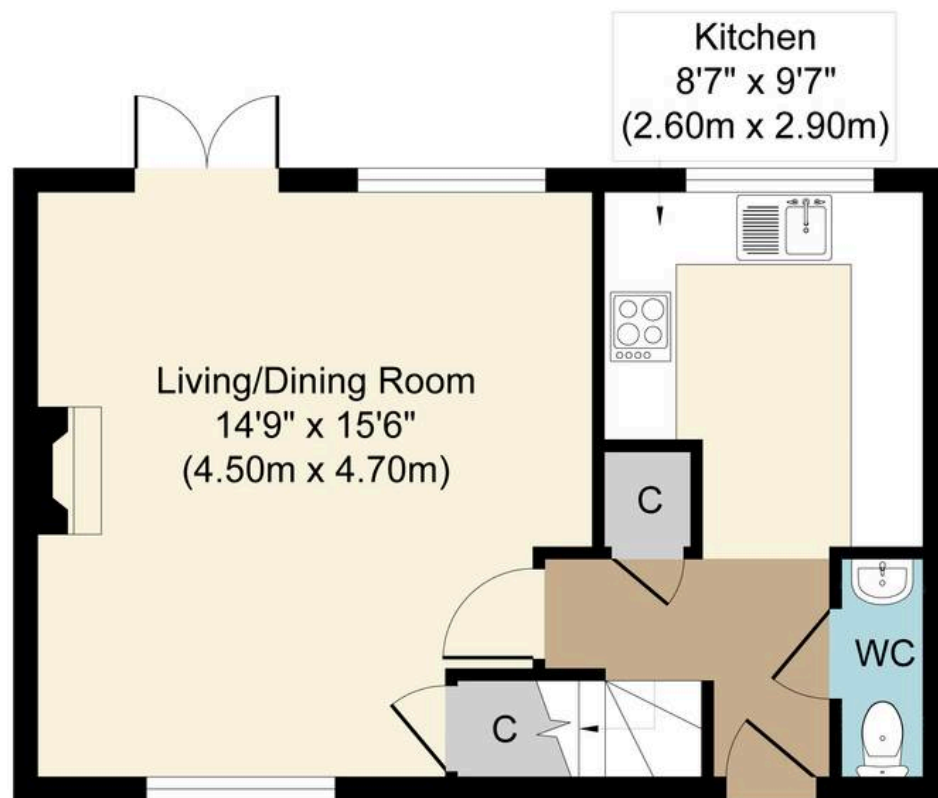
In summary, this two-bedroom terrace exudes charm, comfort, and convenience, making it a perfect abode for those seeking a quality home in a desirable village location. Book your viewing today and experience the essence of contemporary village living at its finest.

Council Tax band: E Tenure: Freehold

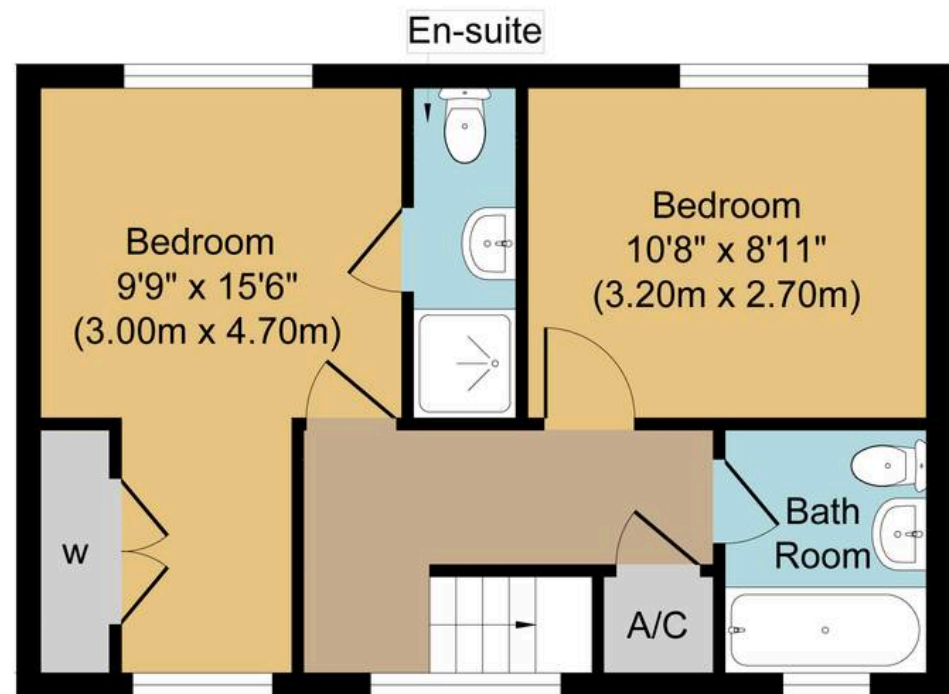
- Beautiful Two Bedroom Terrace In A Sought-after Village Location







Ground Floor
Approximate Floor Area
362 sq. ft
(33.60 sq. m)



First Floor
Approximate Floor Area
362 sq. ft
(33.60 sq. m)

St Mary's Walk, RH1
Approx. Gross Internal Floor Area 724 sq. ft. (67.30 sq. m)



Whilst every attempt has been made to ensure the accuracy of the floor plan contained here, measurements of doors, windows, rooms and any other items are approximate and no responsibility is taken for any error, omission, or mis-statement. The measurements should not be relied upon for valuation, transaction and/or funding purposes. This plan is for illustrative purposes only and should be used as such by any prospective purchaser or tenant. The services, systems and appliances shown have not been tested and no guarantee as to their operability or efficiency can be given.