



10 London Road.

Reigate

Guide Price **£475,000**

**hm** halliwell  
marks



## 10 London Road

Nestled in the heart of Reigate, this stunning mid-terraced house offers a delightful blend of charm and modern living. The beautiful terrace cottage boasts three double bedrooms, two reception rooms, and a charming courtyard garden – a rare gem in the hustle and bustle of town centre living. From the moment you step inside, you are greeted by the warmth of several feature fireplaces, providing a cosy ambience throughout the home. The property also boasts a log burner, perfect for those chilly winter evenings, creating a snug retreat for residents to unwind.

In addition to its internal charm, this property is backing onto the beautiful and historic Castle Gardens, making it a truly unique find. The French doors in the kitchen flood the space with natural light, offering a seamless transition to the courtyard garden – an idyllic spot for al fresco dining during the warmer months. Arrange over three floors, the property features two double bedrooms on the second floor, with one of them having its private shower, ideal for a guest suite or a private retreat. While there is no off-street parking available, residents can avail of on-road parking during permitted hours and nearby public parking, ensuring added convenience for both homeowners and guests, alike.

Don't miss this opportunity to make this enchanting property your new home, where historic charm meets contemporary living, all within the vibrant setting of central Reigate. Contact us today to arrange a viewing and discover the many wonders this home has to offer.

Council Tax band: TBD

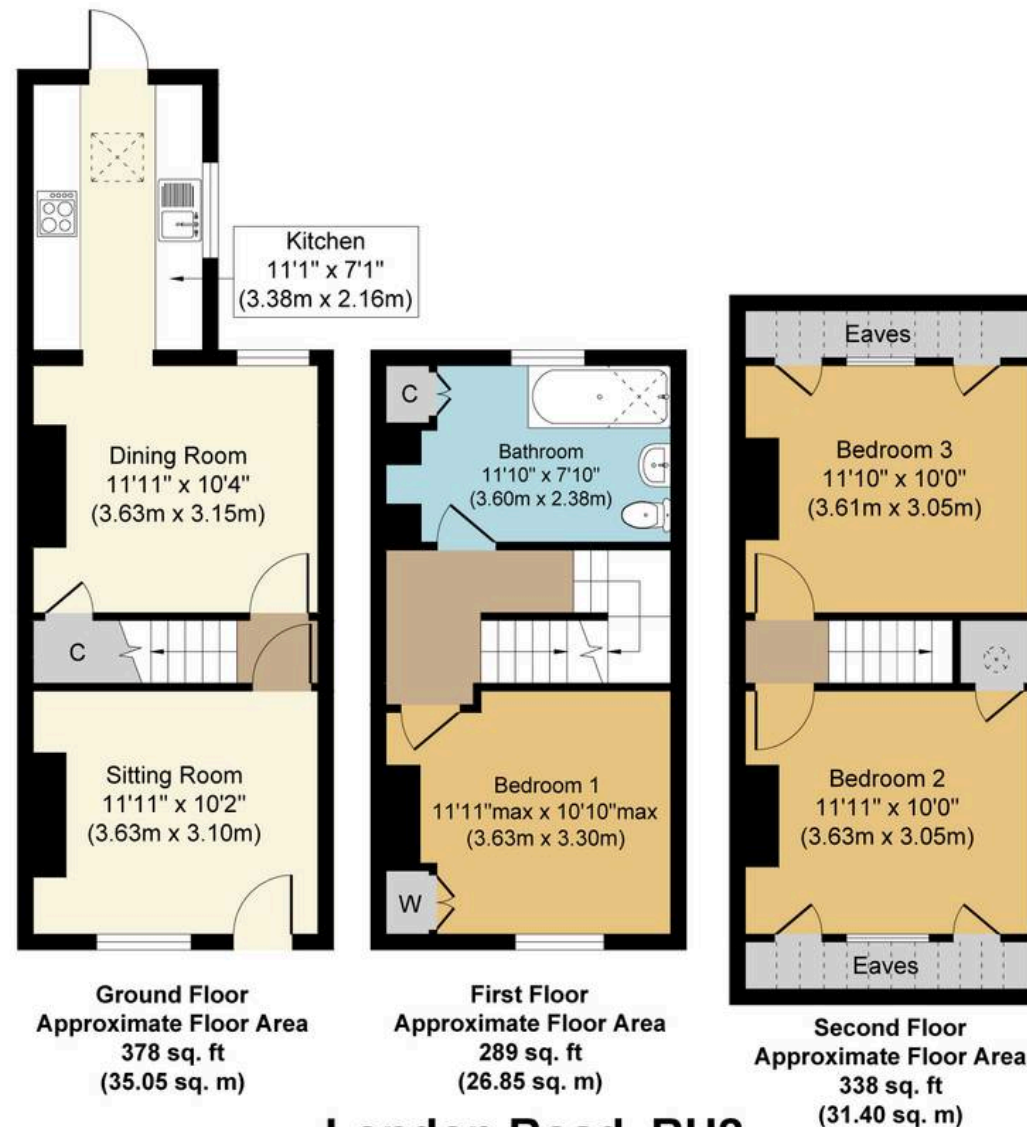
Tenure: Freehold











**London Road, RH2**  
**Approx. Gross Internal Floor Area 1005 sq. ft. (93.3 sq. m)**

Whilst every attempt has been made to ensure the accuracy of the floor plan contained here, measurements of doors, windows, rooms and any other items are approximate and no responsibility is taken for any error, omission, or mis-statement. The measurements should not be relied upon for valuation, transaction and/or funding purposes. This plan is for illustrative purposes only and should be used as such by any prospective purchaser or tenant. The services, systems and appliances shown have not been tested and no guarantee as to their operability or efficiency can be given.

Copyright Property Portraits | [www.propertyportraits.co.uk](http://www.propertyportraits.co.uk)

**halliwell**  
**marks**