



25 Holmesdale Park Coopers Hill Road, Nutfield
Redhill

In Excess of **£700,000**



25 Holmesdale Park.

Situated within the exclusive gated country mansion of Holmesdale Park, this exceptional 3-bedroom apartment offers a unique opportunity to reside in a prestigious setting. Converted by Persimmon Homes circa 2000, the property boasts original period features, a share of freehold, and no onward chain. As you enter through the private electric gates and wind your way through the extensive grounds, the apartment welcomes you with impressively high ceilings, intricate cornicing, and original wooden shutters. The beautifully appointed sitting room offers far-reaching views, while the master bedroom features an en-suite and access to a private balcony overlooking the picturesque surroundings. Additional features include a garage, parking, and access to the on-site tennis court and lake, enhancing the lifestyle this residence offers.

Nestled in the charming village of Nutfield, this property provides a tranquil escape without sacrificing connectivity. Residents can enjoy the amenities of the local public houses as well as nearby attractions such as Nutfield Priory and Priory Farm. Merstham & Redhill stations are easily accessible, providing convenient transportation options to various destinations including London and Gatwick. The M25 is also within reach, offering further accessibility to major road networks. The extensive 15-acre grounds surrounding the property provide a serene environment, perfect for leisurely strolls or simply unwinding amidst nature. This residence encapsulates a harmonious blend of modern comfort and historic charm, making it a truly exceptional opportunity for those seeking an elegant abode in a well-connected yet idyllic setting.

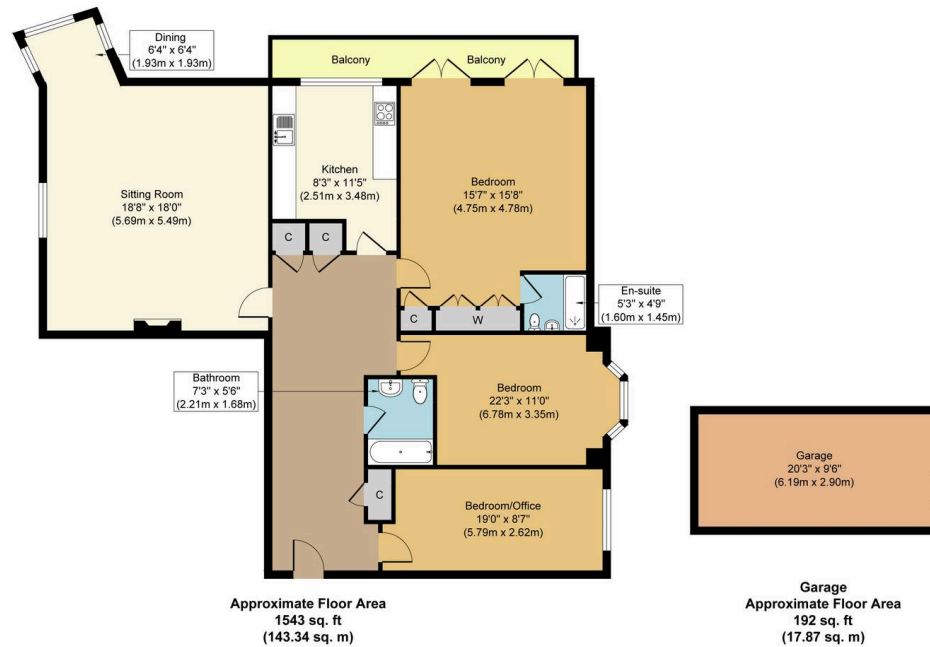
Council Tax band: F

Tenure: Leasehold

- Exclusive Gated Country Mansion Converted Circa 2000 By Persimmon Homes
- Three Bedrooms, Master With En-suite
- Beautiful Sitting Room With Far Reaching Views







Holmesdale Park, RH1



Approx. Gross Internal Floor Area 1,543 sq. ft. (143.34 sq. m)

Garage Internal Floor Area 192 sq. ft. (17.87 sq. m)

Whilst every attempt has been made to ensure the accuracy of the floor plan contained here, measurements of doors, windows, rooms and any other items are approximate and no responsibility is taken for any error, omission, or mis-statement. The measurements should not be relied upon for valuation, transaction and/or funding purposes. This plan is for illustrative purposes only and should be used as such by any prospective purchaser or tenant. The services, systems and appliances shown have not been tested and no guarantee as to their operability or efficiency can be given.