



24 East Road

Reigate

Guide Price £650,000

 halliwell
marks

24 East Road

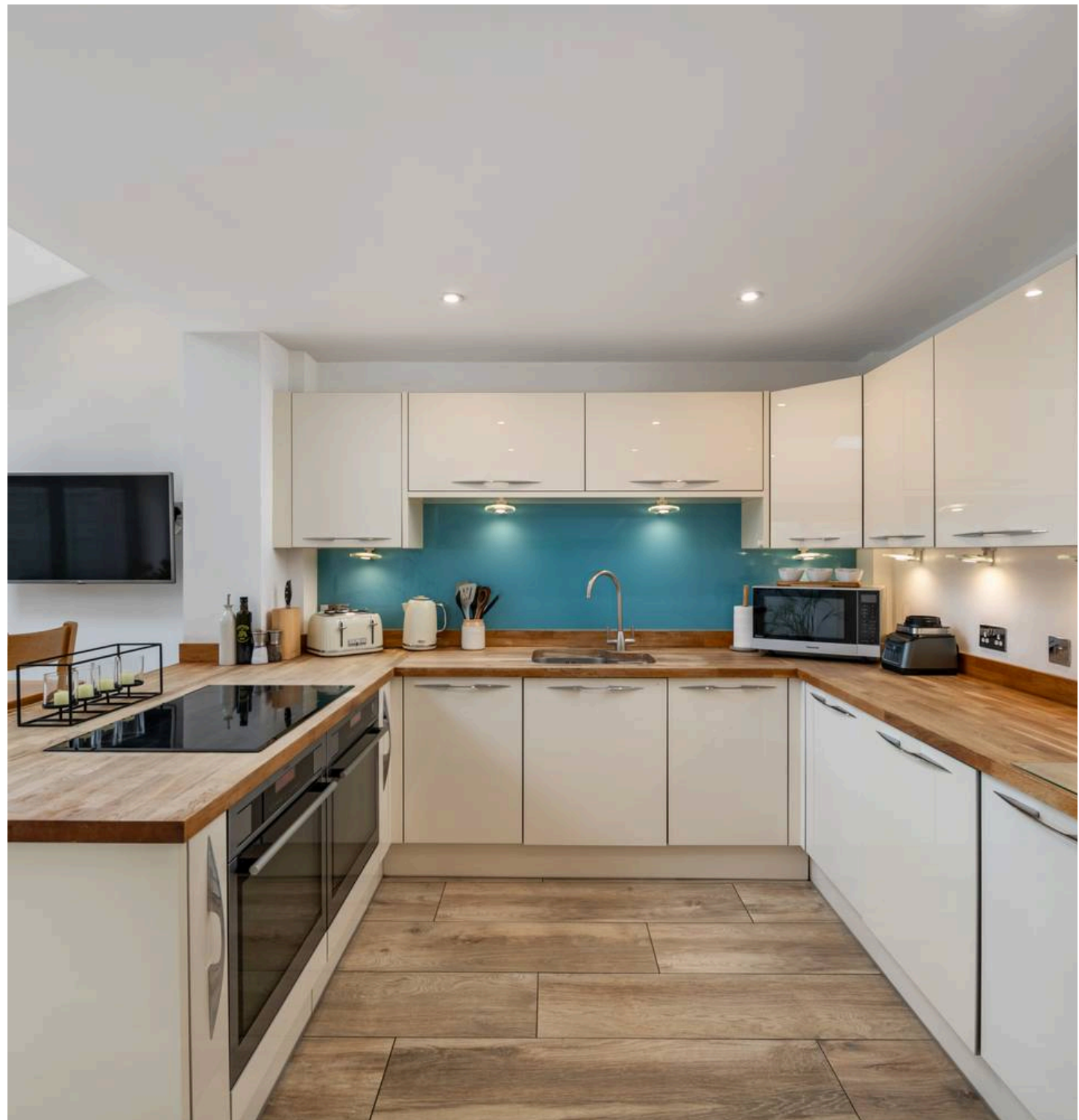
Situated in a quiet cul de sac, this modern End Of Terrace House presents an exceptional opportunity for comfortable living. Impeccably maintained, this property boasts a large kitchen/dining/family space, perfect for entertaining or quiet family evenings. The property is conveniently situated, within a 5-7 minute stroll to the town centre and train station, while falling within the highly sought-after catchment area for Holmesdale and Priory schools. With a garage and off-street parking, convenience is key for busy modern lifestyles. Step outside through the bi-folding doors and be greeted by the stunning south-facing landscaped garden with a delightful patio; an ideal spot for relaxing al fresco evenings or hosting gatherings. The seamless transition of ceramic tiling from the kitchen/diner to the patio adds a touch of elegance, enhancing the charm of the outdoor space especially in the summer months.

The outdoor area of this property further impresses with its south-facing aspect, ensuring abundant sunlight throughout the day. The garden offers ample space for gardening enthusiasts or those seeking a private sanctuary to unwind.

Council Tax band: D

Tenure: Freehold

- Modern house presented in excellent order throughout
- Great location in quiet cul de sac
- 5-7 minutes walk to the town centre and train station
- Catchment for Holmesdale and Priory schools
- Large kitchen/dining/family space
- Garage and off street parking
- South facing landscaped garden with patio







Ground Floor
Approximate Floor Area
657 sq. ft
(61.00 sq. m)



First Floor
Approximate Floor Area
379 sq. ft
(35.20 sq. m)



Approx. Gross Internal Floor Area 1,035 sq. ft. (96.20 sq. m)

Whilst every attempt has been made to ensure the accuracy of the floor plan contained here, measurements of doors, windows, rooms and any other items are approximate and no responsibility is taken for any error, omission, or mis-statement. The measurements should not be relied upon for valuation, transaction and/or funding purposes. This plan is for illustrative purposes only and should be used as such by any prospective purchaser or tenant. The services, systems and appliances shown have not been tested and no guarantee as to their operability or efficiency can be given.