



louchshacklock
and partners LLP

01908 224 760
www.louchshacklock.com



Boundaries are approximate

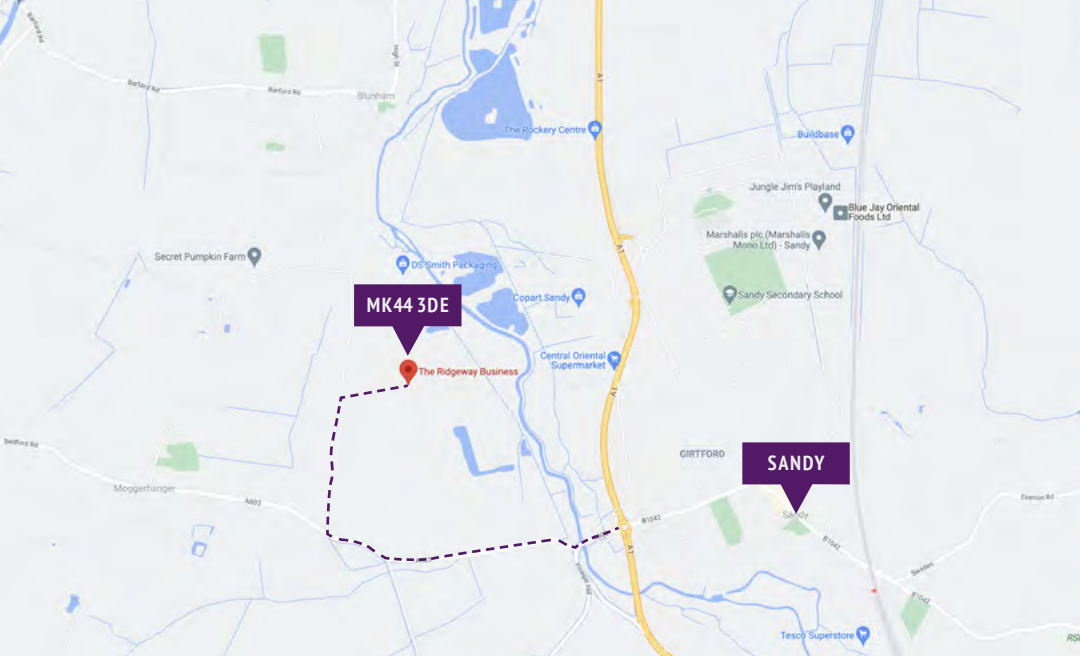
UNITS / YARDS 1 & 3/4

RIDGEWAY BUSINESS PARK | BLUNHAM | MK44 3DE

FOR SALE

TWO NEARBY TRANSPORT / GOODS YARDS EXTENDING TO 0.73 ACRE APPROX. AND 1 ACRE APPROX.





■ Bedford 6 miles / Sandy 3 miles ■ A1 1.5 miles

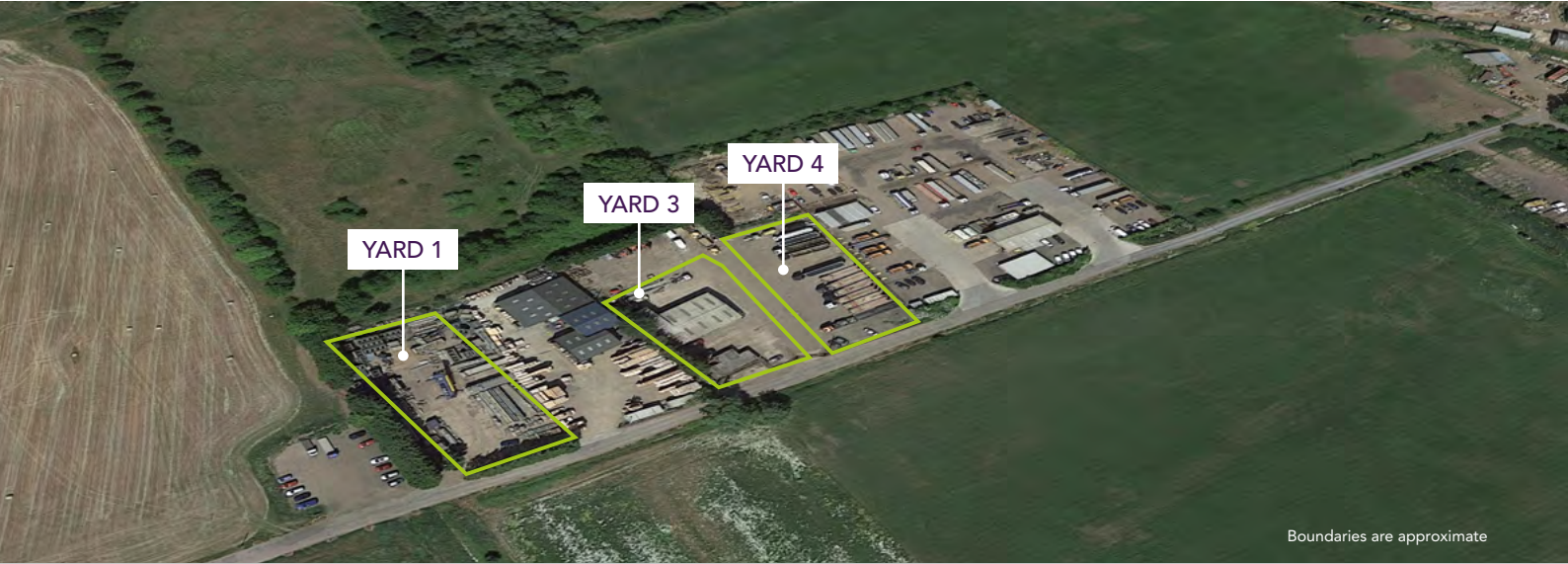
YARD 1

CLEAR SITE WITH APPROX 50% LAID TO CONCRETE, THE REMAINDER BEING MOT.

- 0.73 Acre approx.
- Prominent position

YARDS 3/4

- Warehouse 3,505 sq ft
- 7 Level access doors
- Office / welfare 950 sq ft
- 1 Acre approx.
- MOT surface
- Fenced & gated



Boundaries are approximate

louch shacklock

01908 224760

louchshacklock.com

Robert Shacklock
 DDI: 01908 224764
 robert@louchshacklock.com