



Price

£150,000

Leasehold

2x  1x  1x 

**Meadow Court,
Flansham Park, Priestley
Way, Bognor Regis,
West Sussex PO22**

OVER 60?

Secure this property
for up to **59% less!**

cubitt&west
Helping you move forwards



Main features

- No forward chain
- Age restricted
- Excellent bus links a short distance
- A short walk to the doctor's surgery
- Beautifully maintained communal gardens

Accommodation

GROUND FLOOR

Hall

Lounge: 14'4 at widest point x 13'8 at widest point (4.37m x 4.17m)

Kitchen: 15'4 x 8'6 (4.68m x 2.59m)

Bedroom 1: 13'0 at widest point x 8'9 at widest point (3.97m x 2.67m)

Bedroom 2: 8'9 into door well x 7'4 (2.67m x 2.24m)

Bathroom

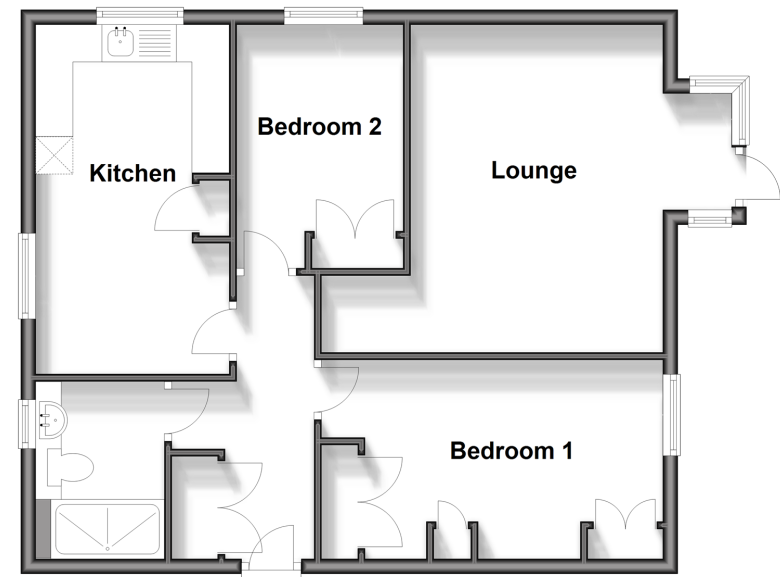
OUTSIDE

Communal Gardens

Resident Parking

Ground Floor

Approx. 61.9 sq. metres (666.2 sq. feet)



Call Bognor - 01243 867632 ■ cubittandwest.co.uk

■ Legal advice should be taken to verify fixtures/fittings, planning, alterations and/or lease details
 ■ Through a Homewise Home For Life Plan people aged 60+ can secure this property for up to 59% less, by purchasing a Lifetime Lease.

■ Appliances & services are untested, dimensions are approximate and floor plans are not to scale



40204702/20250102/GS1/SC