



Guide Price
£325,000

Freehold

2x  1x  2x 

**Marylands Crescent,
Glenwood, Bognor
Regis, West Sussex
PO22**

OVER 60?

Secure this property
for up to **59% less!**

cubitt & west
Helping you move forwards



Main features

- Well presented with a delightful sun room to the rear overlooking the garden
- Fitted bedroom furniture
- Shopping outlets can be found nearby in Shripney Road
- Plenty of off road parking
- Picturesque Hotham Park is a short distance

Accommodation

GROUND FLOOR

Entrance Hall

Lounge: 16'8 x 11'3 into recess (5.08m x 3.43m)

Kitchen: 10'9 x 9'4 (3.28m x 2.85m)

Sun Room: 21'5 x 8'2 (6.53m x 2.49m)

Bedroom 1: 15'0 at widest point x 11'3 at widest point (4.58m x 3.43m)

Bedroom 2: 10'9 into door well x 9'10 (3.28m x 3.00m)

Shower Room

OUTSIDE

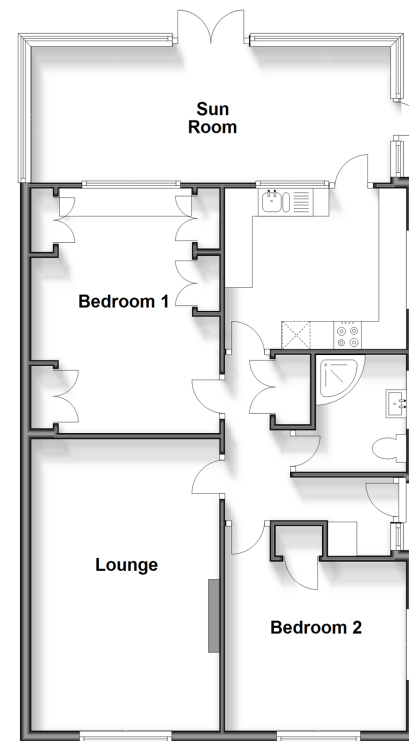
Front Garden

Driveway

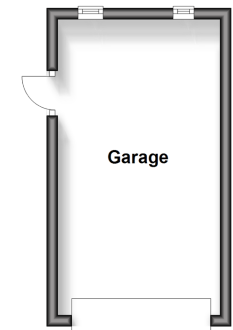
Garage To The Side

Rear Garden

Ground Floor
Approx. 82.4 sq. metres (886.7 sq. feet)



Outbuilding
Approx. 15.6 sq. metres (167.9 sq. feet)



Call Bognor - 01243 867632 ■ cubittandwest.co.uk

- Legal advice should be taken to verify fixtures/fittings, planning, alterations and/or lease details
- Appliances & services are untested, dimensions are approximate and floor plans are not to scale
- Through a Homewise Home For Life Plan people aged 60+ can secure this property for up to 59% less, by purchasing a Lifetime Lease.



40204679/20250113/IH/KF