



Price

£495,000

Freehold

3x  1x  1x 

**Peartree Lane,
Doddinghurst,
Brentwood, Essex, CM15**



Main features

- Spacious lounge
- Granite worktops in the modern kitchen
- Ground floor cloakroom
- En-suite shower room and family bathroom with jacuzzi bath
- Off road parking and garage
- Good sized garden
- Village location

Accommodation

GROUND FLOOR

Hallway

Lounge: 17'9 x 10'3 (5.41m x 3.13m)

Dining Area: 20'8 x 17'0 (6.30m x 5.19m)

Kitchen/Breakfast Room: 16'4 x 7'1 (4.98m x 2.16m)

Cloakroom: 7'0 x 2'7 (2.14m x 0.79m)

FIRST FLOOR

Bedroom 1: 20'7 x 10'1 (6.28m x 3.08m)

En-Suite Shower Room: 13'9 x 7'7 (4.19m x 2.31m)

Bedroom 2: 16'6 x 12'8 (5.03m x 3.86m)

Bedroom 3: 15'7 x 8'3 (4.75m x 2.52m)

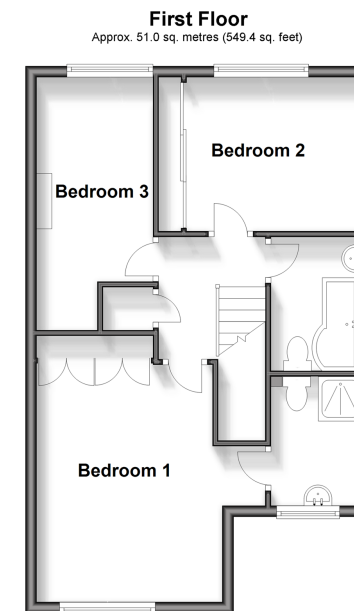
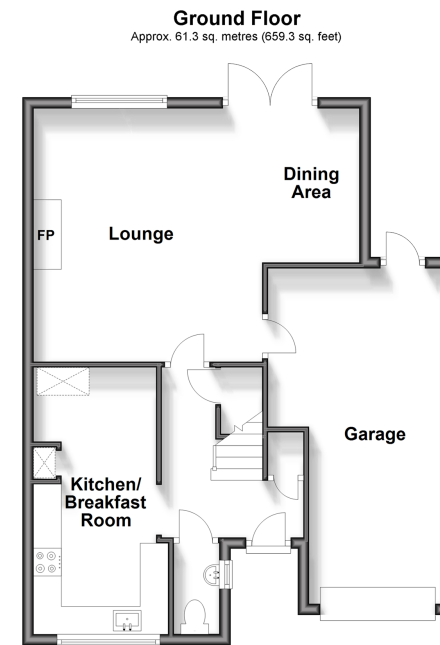
Bathroom: 14'3 x 7'7 (4.35m x 2.31m)

OUTSIDE

Garage

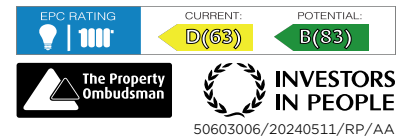
Off Street Parking

Rear Garden



Call Brentwood - 01277 218525 ■ douglasallen.co.uk

- Legal advice should be taken to verify fixtures/fittings, planning, alterations and/or lease details
- Appliances & services are untested, dimensions are approximate and floor plans are not to scale



50603006/20240511/RP/AA