



**Price**  
**£700,000**

**Freehold**

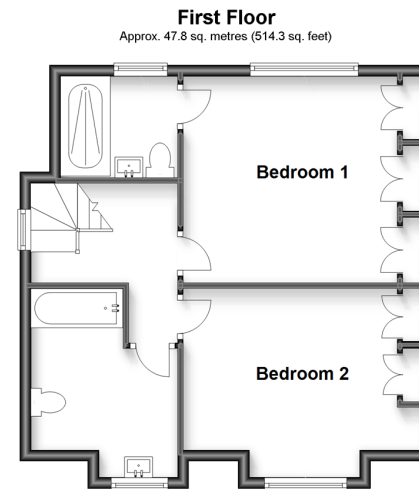
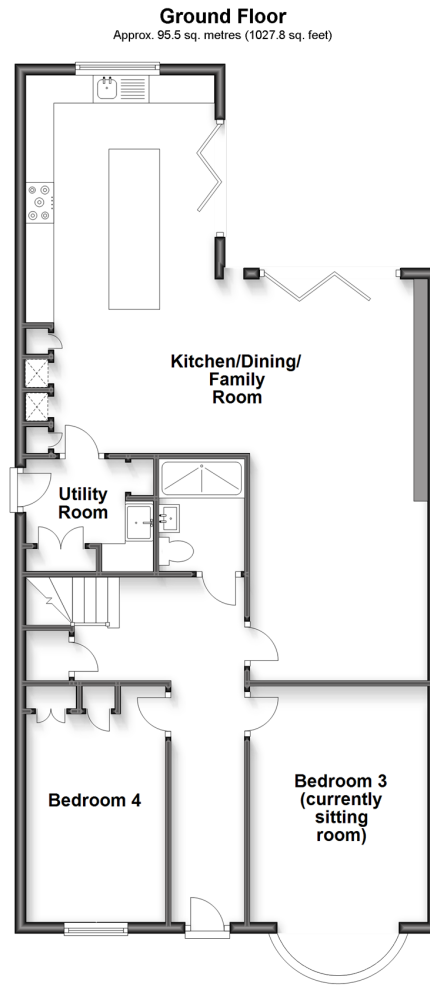
4x  3x  1x 

**Cedar Road, Hutton,  
Brentwood, Essex, CM13**

**OVER 60?**

Secure this property  
for up to **59% less!**

 **DOUGLAS  
ALLEN**  
Helping you move forwards



## Accommodation

### GROUND FLOOR

Hallway  
 Family Room/Dining Area: 25'0 x 17'0 (7.63m x 5.19m)  
 Kitchen Area: 12'1 x 11'1 (3.69m x 3.38m)  
 Utility Room: 13'6 (4.12m) x 10'7 (3.23m) narrowing to 9'8 (2.95m)  
 Bedroom 3 : 13'8 x 10'3 (4.17m x 3.13m)  
 Bedroom 4: 13'6 x 8'2 (4.12m x 2.49m)  
 Bathroom  
 Shower Room

### FIRST FLOOR

Landing  
 Bedroom 1: 12'0 x 10'7 (3.66m x 3.23m)  
 En-Suite Shower Room  
 Bedroom 2: 12'1 x 11'0 (3.69m x 3.36m)  
 Family Bathroom

### OUTSIDE

Front & Rear Garden  
 Off Street Parking





## Main features

- Impressive family home in an ideal location for the station and local schools
- Stunning open plan kitchen/dining/family room area
- Bi-fold door leading out to the large, well maintained garden
- Utility room and ground floor shower room
- Modern built in wardrobes and en-suite shower room to bedroom 1

## Nearest Schools

Primary Schools: Willowbrook Primary 0.2 miles, Hutton All Saints' C of E Primary 0.2 miles, St Joseph The Worker Catholic Primary 0.3 miles

Secondary Schools: St Martin's School 0.7 miles, Shenfield

## Transport Information

Train Stations: Shenfield 1.2 miles, Brentwood 3.3 miles, Billericay 3.7 miles

## Address

Cedar Road, Hutton, Brentwood, Essex, CM13

## Directions

For directions to this property please contact us.



Call Brentwood Branch 01277 218525 ■ [douglasallen.co.uk](https://douglasallen.co.uk)



■ Legal advice should be taken to verify fixtures/fittings, planning, alterations and/or lease details ■ Appliances & services are untested, dimensions are approximate and floor plans are not to scale  
■ Through a Homewise Home For Life Plan people aged 60+ can secure this property for up to 59% less, by purchasing a Lifetime Lease.

<b>EPC RATING</b>	<b>CURRENT:</b>	<b>POTENTIAL:</b>

50603013/20240215/RP/BH