



Price

£240,000

Leasehold

2x  1x  1x 

**Hatch Road, Brentwood,
Essex, CM15**



Main features

- Ideal first time buy or investment opportunity
- Offered with no onward chain
- Own front garden
- Excellent transport links to the railway station
- Sought after location
- Ample off street parking

Accommodation

FIRST FLOOR

Hallway

Living Room : 12'3 x 10'10 (3.74m x 3.30m)

Kitchen: 9'8 x 7'7 (2.95m x 2.31m)

Bedroom 1: 11'8 x 8'9 (3.56m x 2.67m)

Bedroom 2: 10'8 x 7'4 (3.25m x 2.24m)

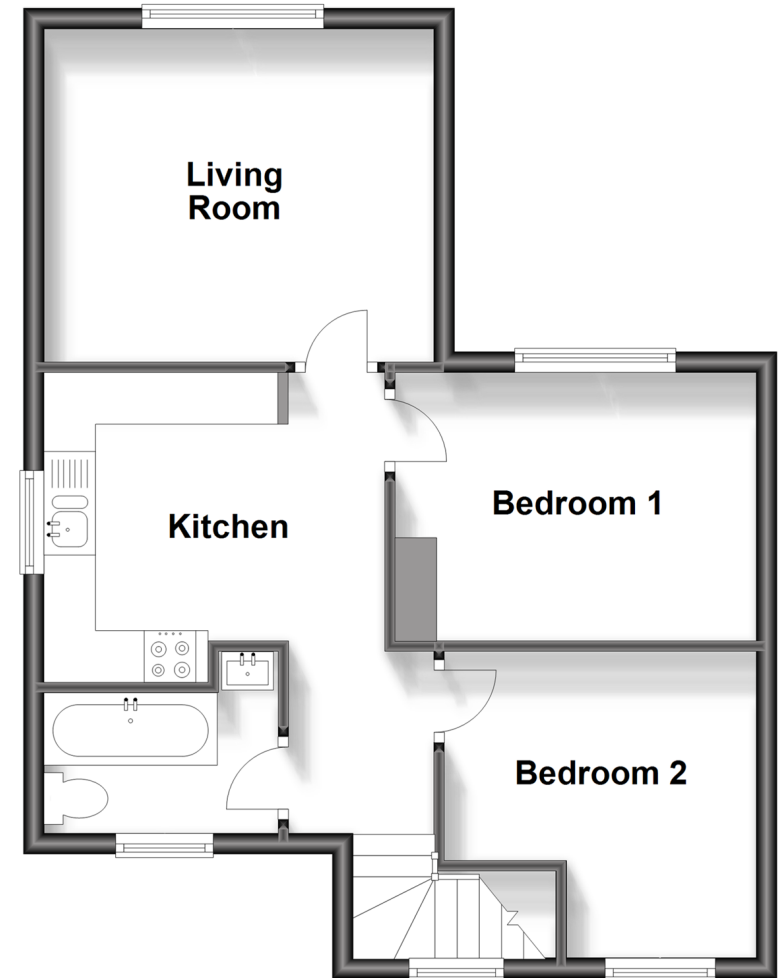
Bathroom: 6'8 x 5'0 (2.03m x 1.53m)

OUTSIDE

Own Front Garden

First Floor

Approx. 48.0 sq. metres (516.4 sq. feet)



Call Brentwood - 01277 218525 ■ douglasallen.co.uk

- Legal advice should be taken to verify fixtures/fittings, planning, alterations and/or lease details
- Appliances & services are untested, dimensions are approximate and floor plans are not to scale



50602958/20240302/RP/AA