



**Price**  
**£150,000**

**Leasehold**

1x  1x  1x 

**Mayflower House, The  
Drive, Great Warley,  
Brentwood, Essex, CM13**

**OVER 60?**

Secure this property  
for up to **59% less!**



Video Tour available



**DOUGLAS  
ALLEN**

Helping you move forwards



## Main features

- Great sized apartment
- Residents parking space
- Overlooking communal garden
- Within easy reach of Brentwoods Elizabeth Line Station
- A12/M25 just a short drive away ideal for commuting

## Accommodation

### FIRST FLOOR

Entrance Hall

Living Room: 17'2 x 16'3 (5.24m x 4.96m)

Kitchen: 12'5 x 10'6 (3.79m x 3.20m)

Bedroom : 17'1 x 10'4 (5.21m x 3.15m)

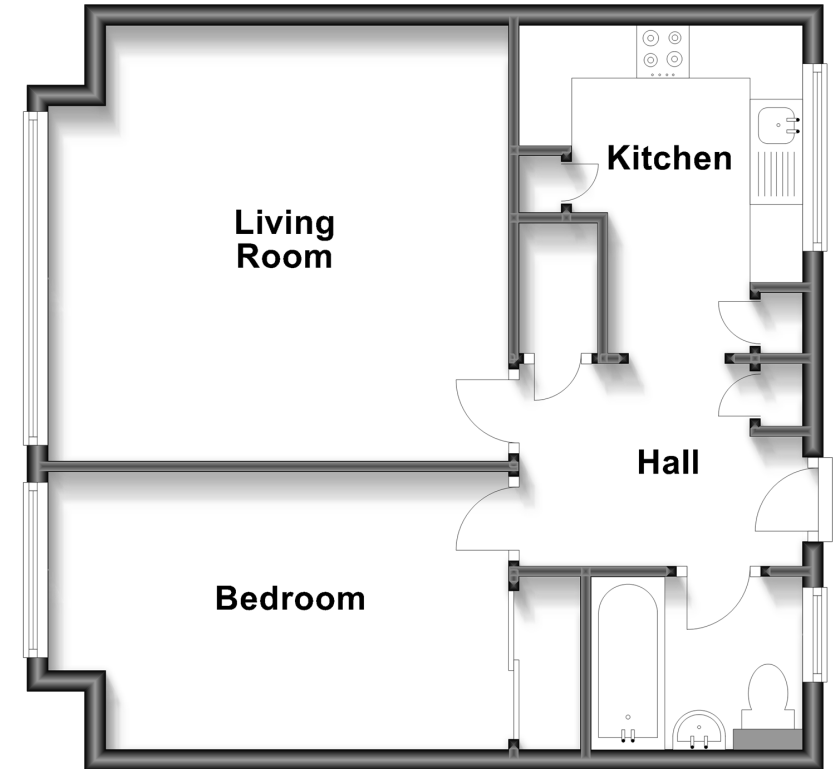
Bathroom: 7'10 x 6'9 (2.39m x 2.06m)

### OUTSIDE

Residents Parking  
Communal Gardens

## First Floor

Approx. 48.5 sq. metres (522.3 sq. feet)



**Call Brentwood - 01277 218525 ■ [douglasallen.co.uk](http://douglasallen.co.uk)**

- Legal advice should be taken to verify fixtures/fittings, planning, alterations and/or lease details
- Appliances & services are untested, dimensions are approximate and floor plans are not to scale
- Through a Homewise Home For Life Plan people aged 60+ can secure this property for up to 59% less, by purchasing a Lifetime Lease.



50602918/20240223/FL/DP