



7 Fenby Avenue, Darlington
Darlington



Offers in Region of £139,000



7 Fenby Avenue

Darlington, Darlington

Three-bedroom house is located in a popular Eastbourne area, within easy reach of local amenities and good transport links.

The ground floor includes a spacious living room, a fitted kitchen / diner area suitable for family use. Upstairs, there are three good-sized bedrooms and a family bathroom.

The property is offered with no onward chain, providing a straightforward purchase opportunity. It also benefits from a council tax band A rating. An Energy Performance Certificate is currently being prepared and will be available once complete.

This property will appeal to first-time buyers, families, and investors seeking a conveniently located home.

Council Tax band: A

Tenure: Freehold

- Three Bedroom Property
- No Onward Chain
- Council Tax Band A
- Three Spacious Bedrooms
- Family Bathroom
- Energy Performance Certificate: TBC



Hallway

14'1 x 6'2 (4.31 x 1.90m)

Lounge

14'2 x 12'2 (4.33 x 3.72m)

Kitchen/Diner

19'10 x 9'1 (6.06 x 2.77m)

Landing

8'7 x 6'0 (2.62 x 1.84m)

Bedroom 1

14'0 x 10'7 (4.27 x 3.25m)

Bedroom 2

8'11 x 12'8 (2.73 x 3.88)

Bedroom 3

8'8 x 8'11 (2.64 x 2.72m)

Bathroom

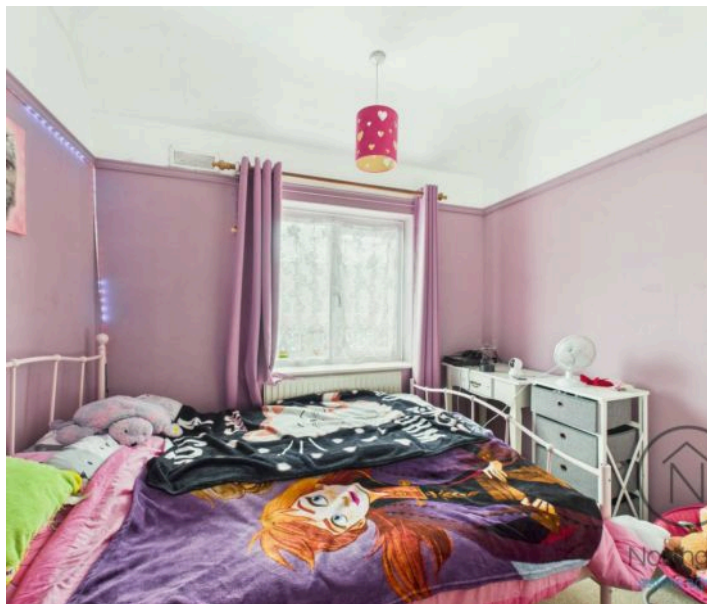
5'6 x 6'10 (1.68 x 2.09m)

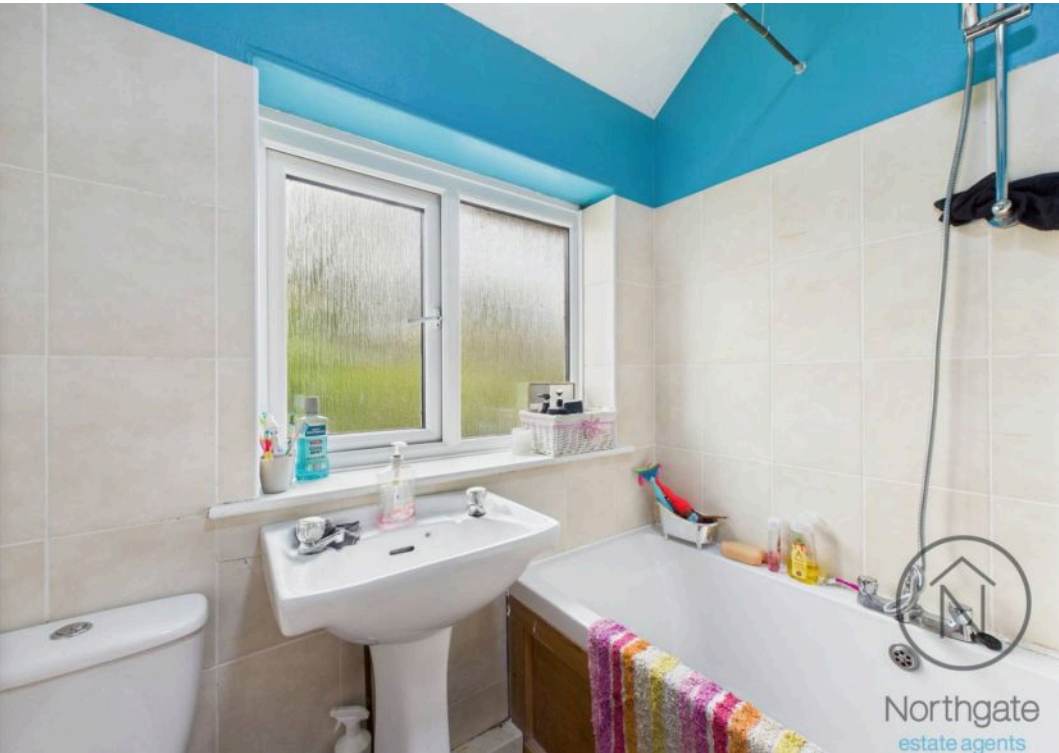




FRONT GARDEN

REAR GARDEN







Northgate
estate agents



Ground Floor

Approximate total area⁽¹⁾

876 ft²

81.4 m²



Floor 1

(1) Excluding balconies and terraces

Calculations reference the RICS IPMS 3C standard. Measurements are approximate and not to scale. This floor plan is intended for illustration only.

GIRAFFE360



Northgate - County Durham

Northgate Estate Agents, Suite 3 - DL5 4DH

01325 728333 • info@northgates.net • www.northgates.co.uk/



These particulars do not constitute, nor constitute part of, an offer or contract. No warranties are provided. Verify details through inspection. Northgate estate agents, nor any person in their employment has any authority to make or give any representation or warranty whatever in the relation to this property. All measurements are approximate.