



Northgate

Forster Close, Newton Aycliffe
Newton Aycliffe



In Excess of £325,000



10 Forster Close

Newton Aycliffe, Newton Aycliffe

Offers Invited Between £325,000 to £335,000 - Welcome to your dream home! This stunning extended detached house is a true gem, boasting a fabulous garden room and a modern fitted kitchen/breakfast room. With a perfect blend of spacious living areas and practical features, this property is designed to offer you the ultimate in comfort and luxury.

Upon entering, you are greeted by a welcoming hallway. The ground floor offers a spacious lounge, ideal for relaxing with family and friends. The dining room is perfect for formal gatherings and special occasions. The heart of this home is undoubtedly the modern kitchen/breakfast room, providing ample space for cooking and dining. It is equipped with top-of-the-line appliances and stylish finishes, Open plan to the highlight of this property; the garden room, flooded with natural light through its bi-fold doors that seamlessly connect the indoor and outdoor spaces. This room is versatile, serving as a bright and airy retreat for relaxation or as a fantastic entertainment area for all seasons.

Additionally, you'll find a convenient utility room with courtesy door to the double garage, storage and a cloakroom with a W.C. on the ground floor.

Ascending the stairs to the first floor landing, you'll discover four generously sized bedrooms. The master bedroom boasts an en-suite wet room and a dressing room. The remaining bedrooms are spacious and bright, offering ample closet space and versatility for various uses.

Completing the first floor is the family bathroom with Jacuzzi bath, Vanity wash and basin and WC.

The property is surrounded by beautifully landscaped



Entrance Hall

Lounge

14'11" x 11'2" (4.56 x 3.40 m)

Dining

9'9" x 9'4" (2.98 x 2.85 m)

Kitchen

9'9" x 17'2" (2.99 x 5.25 m)

Garden Room

12'0" x 15'3" (3.67 x 4.66 m)

Utility Room

9'9" x 5'2" (2.98 x 1.58 m)

WC

6'2" x 2'11" (1.90 x 0.91 m)

First Floor Landing

Bedroom One

16'11" x 9'2" (5.18 x 2.81 m)

Dressing Room

6'8" x 8'5" (2.04 x 2.58 m)

Ensuite

6'3" x 6'3" (1.92 x 1.93)

Bedroom Two

13'0" x 10'10" (3.96 x 3.31 m)

Bedroom Three

9'11" x 10'9" (3.03 x 3.29 m)

Bedroom Four

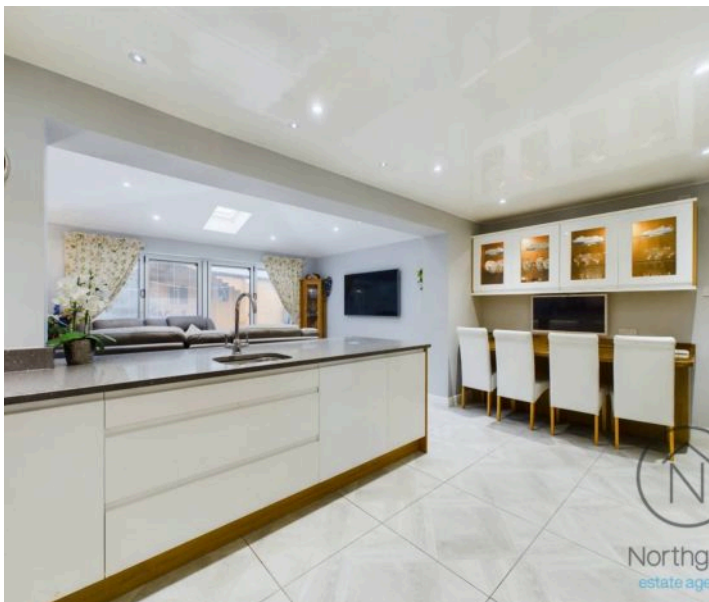
10'11" x 9'1" (3.34 x 2.77 m)

Family Bathroom

6'4" x 6'4" (1.94 x 1.94 m)

Log Cabin

14'6" x 11'7" (4.43 x 3.54 m)





GARDEN

GARAGE

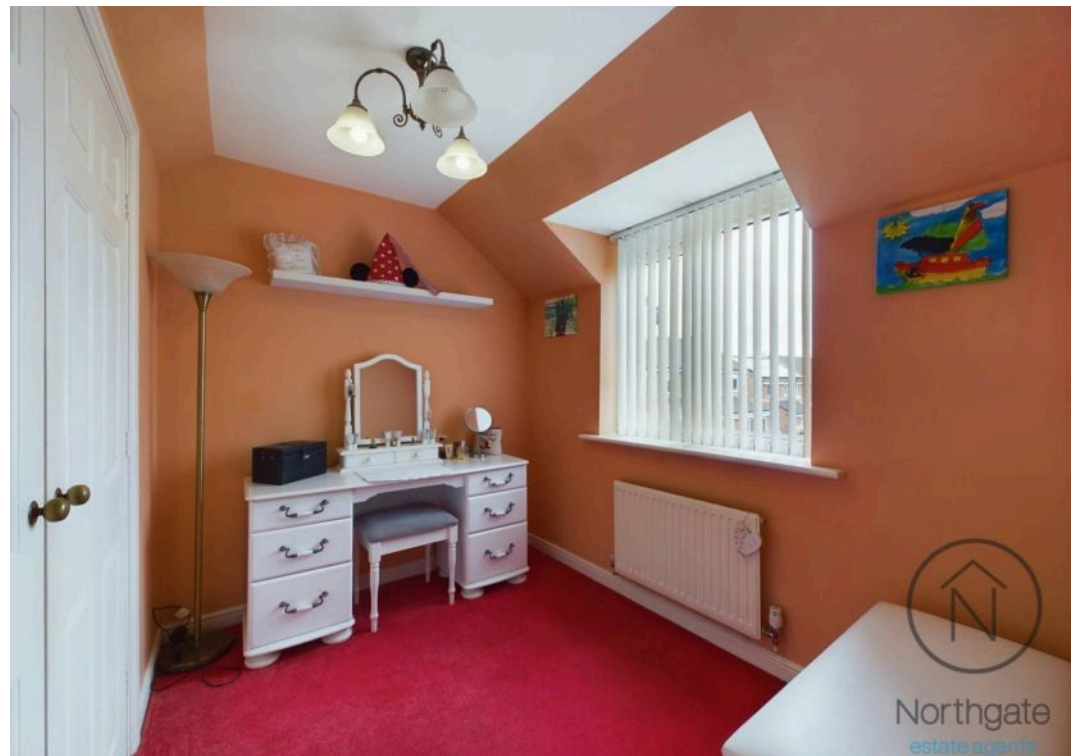
Double Garage

Garage One: 17'6" x 8'7" (5.36 x 2.64 m) Garage Two 17'9" x 8'9" (5.43 x 2.69 m)

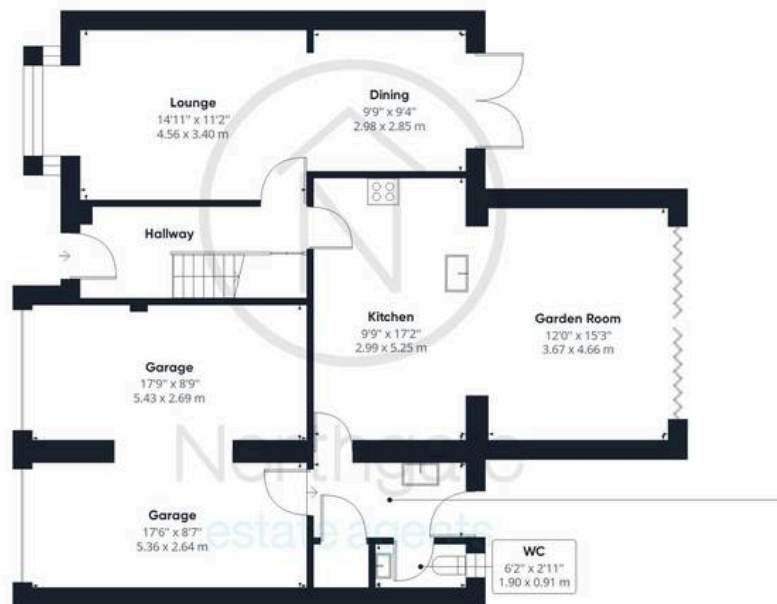
DRIVEWAY

2 Parking Spaces









Ground Floor Building 1



Floor 1 Building 1



Ground Floor Building 2

Approximate total area⁽¹⁾

2053.91 ft²

190.81 m²

(1) Excluding balconies and terraces

While every attempt has been made to ensure accuracy, all measurements are approximate, not to scale. This floor plan is for illustrative purposes only.

GIRAFFE360



Northgate - County Durham

Northgate Estate Agents, Suite 3 - DL5 4DH

01325 728333 • info@northgates.net • www.northgates.co.uk/



These particulars do not constitute, nor constitute part of, an offer or contract. No warranties are provided. Verify details through inspection. Northgate estate agents, nor any person in their employment has any authority to make or give any representation or warranty whatever in the relation to this property. All measurements are approximate.