



Silkin Way, Newton Aycliffe

Newton Aycliffe



In Excess of £55,000



48 Silkin Way

Newton Aycliffe, Newton Aycliffe

NO CHAIN – This two-bedroom mid-terrace property offers a fantastic opportunity for investors. In need of modernisation and updating, the home features two spacious double bedrooms, a family bathroom, and is ideally located close to local amenities.

The property comprises of an entrance hall, kitchen, lounge/diner, two bedrooms, bathroom.

Externally, the property includes both front and rear gardens, providing potential for outdoor leisure space. With the right vision, this property could be transformed into a desirable home or rental investment.

Council Tax band: A

Tenure: Freehold

- Ideal Investment Opportunity ** No Onward Chain**
- Entrance, Lounge/Diner, Kitchen, Family Bathroom
- Two Double Bedrooms
- Gardens to Front & Rear
- Energy Performance Certificate: C



Entrance

8'9" x 3'9" (2.69 x 1.16m)

Lounge/Diner

9'1" x 22'8" (2.77 x 6.92 m)

Kitchen

7'9" x 18'6" (2.36 x 5.65 m)

Landing

5'9" x 8'2" (1.77 x 2.50 m)

Bedroom 1

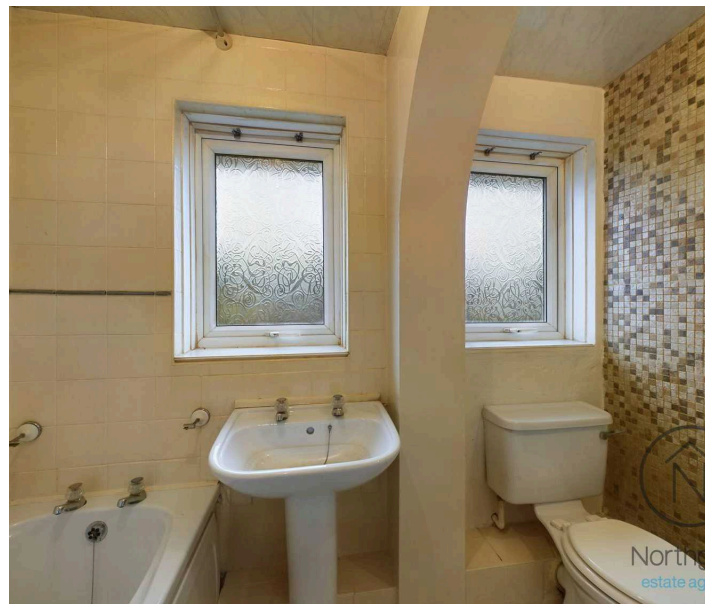
15'5" x 8'7" (4.71 x 2.63 m)

Bedroom 2

9'4" x 13'10" (2.86 x 4.22 m)

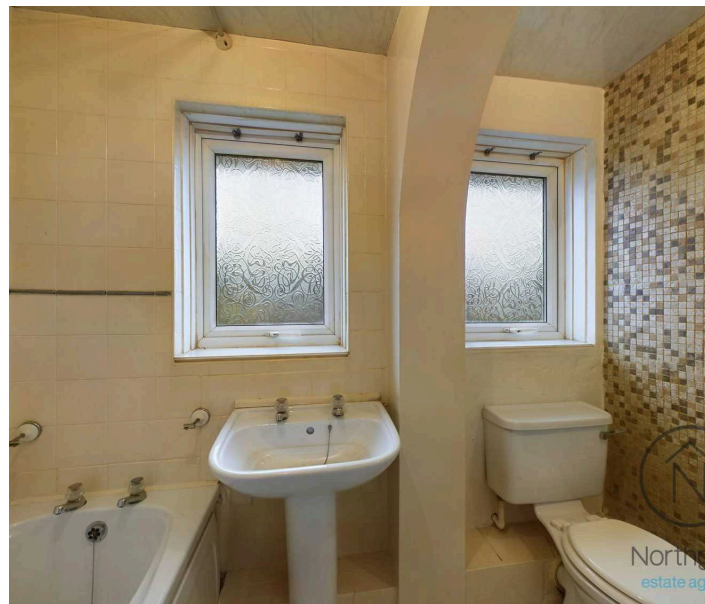
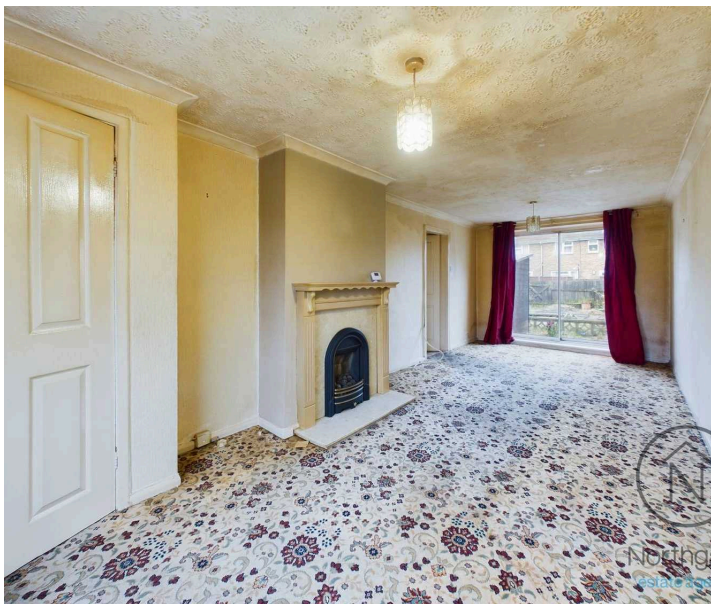
Bathroom

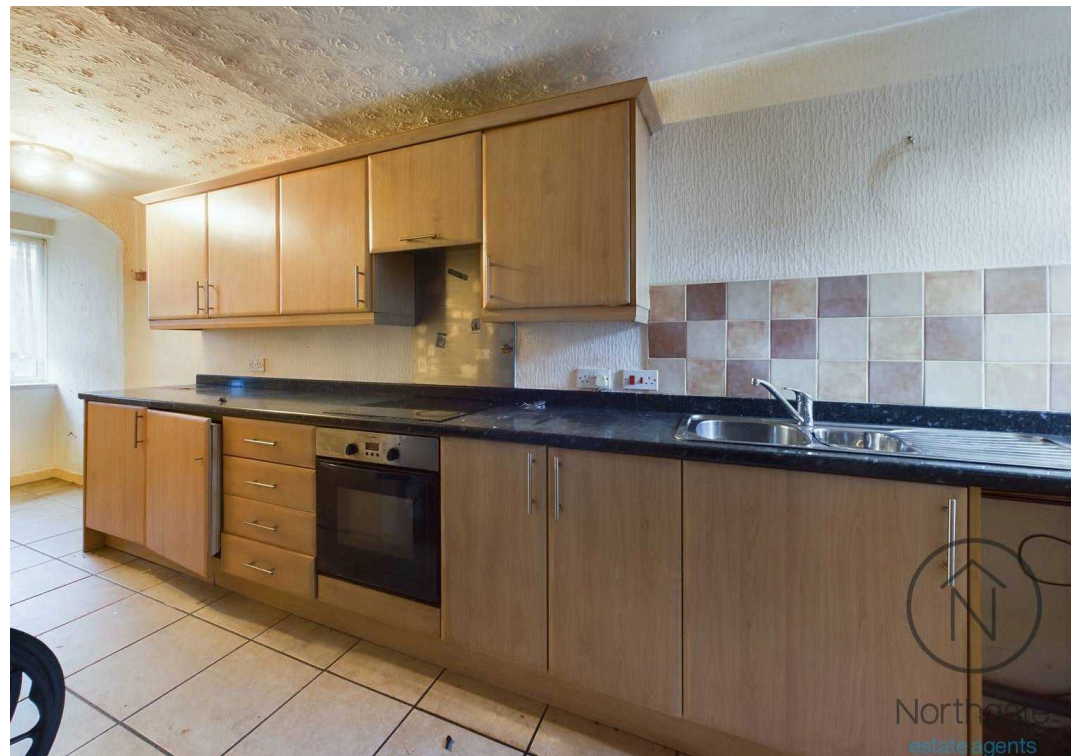
7'8" x 5'5" (2.34 x 1.66 m)

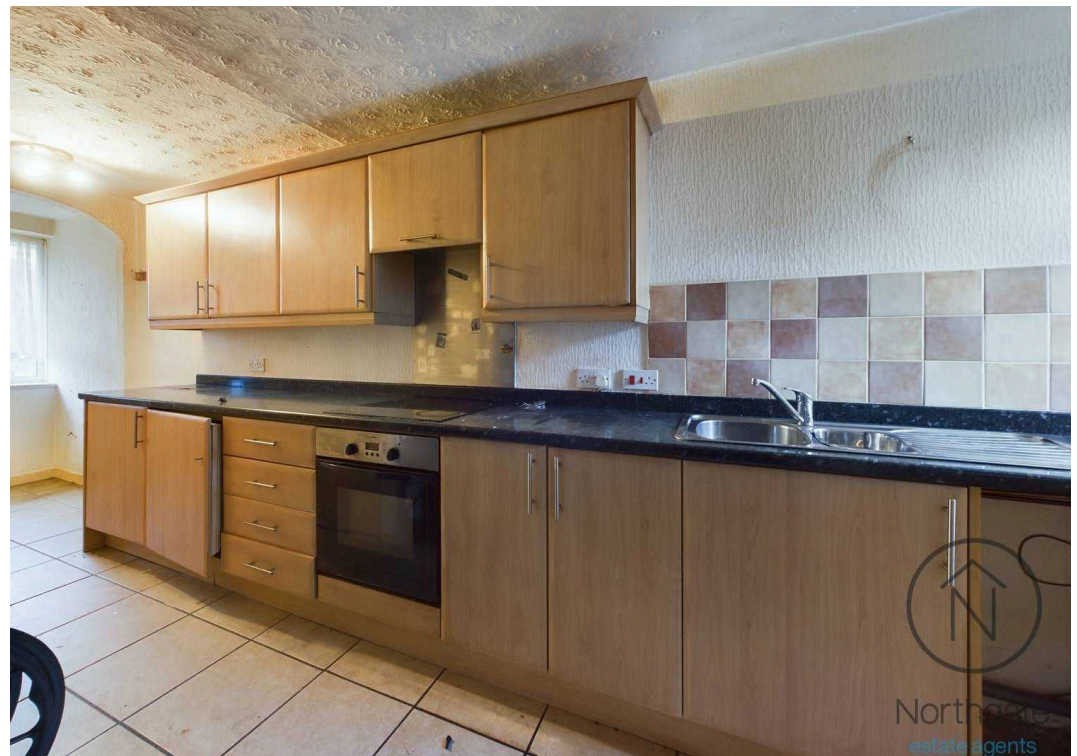


FRONT GARDEN

REAR GARDEN

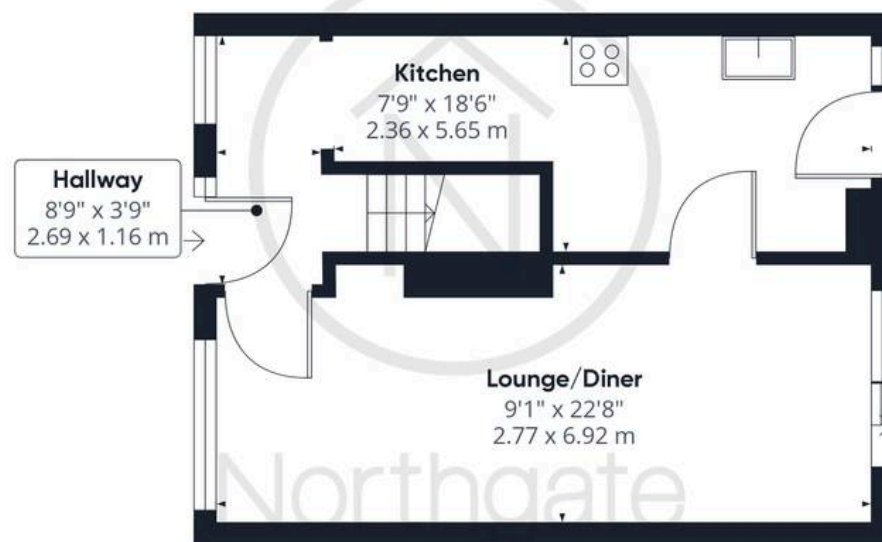








Northgate
estate agents



Northgate
estate agents

Ground Floor

Approximate total area⁽¹⁾

719.79 ft²

66.87 m²



Northgate
estate agents

Floor 1

(1) Excluding balconies and terraces

While every attempt has been made to ensure accuracy, all measurements are approximate, not to scale. This floor plan is for illustrative purposes only.

Calculations are based on RICS IPMS 3C standard.

GIRAFFE 360



Northgate - County Durham

Northgate Estate Agents, Suite 3 - DL5 4DH

01325 728333 • info@northgates.net • www.northgates.co.uk/



These particulars do not constitute, nor constitute part of, an offer or contract. No warranties are provided. Verify details through inspection. Northgate estate agents, nor any person in their employment has any authority to make or give any representation or warranty whatever in the relation to this property. All measurements are approximate.