



Hawkshead Place, Newton Aycliffe
Newton Aycliffe



Offers In Excess of £122,500



92 Hawkshead Place

Newton Aycliffe, Newton Aycliffe

Offers Invited Between £125,000 and £135,000 - Own a share or the entirety of a charming three-bedroom mid-terrace townhouse near Newton Aycliffe Town Centre! Discover modern comfort and convenience with this exceptional property, boasting UPVC double glazing and efficient gas central heating. The property briefly comprises:

A welcoming porch and inviting lounge, a convenient ground floor W/C, a spacious kitchen/diner, a master bedroom with en-suite, two additional double bedrooms offering ample space for guests, family, or even a home office, a family bathroom, and a rear garden – a well-maintained outdoor space perfect for gatherings, gardening, or simply soaking up the fresh air.

Whether you're considering owning a share or the full ownership, this residence promises a life of modern convenience. Embrace the opportunity to make this townhouse your own. Contact us today to arrange a viewing.

Shared Ownership available

Any potential buyer will need to meet the Government's criteria for Affordable Home Ownership:

They must not currently own a property (unless their current property is sold subject to contract)

Their income is less than £80k per annum

They are unable to purchase this type of property in this area without assistance through an affordable home ownership scheme

Any buyer will be financially assessed for the scheme and property.



Entrance Porch

4' 3" x 5' 3" (1.29m x 1.60m)

Lounge

11' 8" x 13' 2" (3.55m x 4.01m)

Hallway

Kitchen

11' 1" x 13' 0" (3.38m x 3.96m)

Wc

3' 3" x 6' 2" (0.99m x 1.88m)

Landing

12' 0" x 6' 0" (3.65m x 1.83m)

Bedroom 2

6' 10" x 13' 3" (2.08m x 4.04m)

Bedroom 3

7' 3" x 13' 2" (2.21m x 4.01m)

Bathroom

6' 9" x 6' 3" (2.06m x 1.90m)

Landing

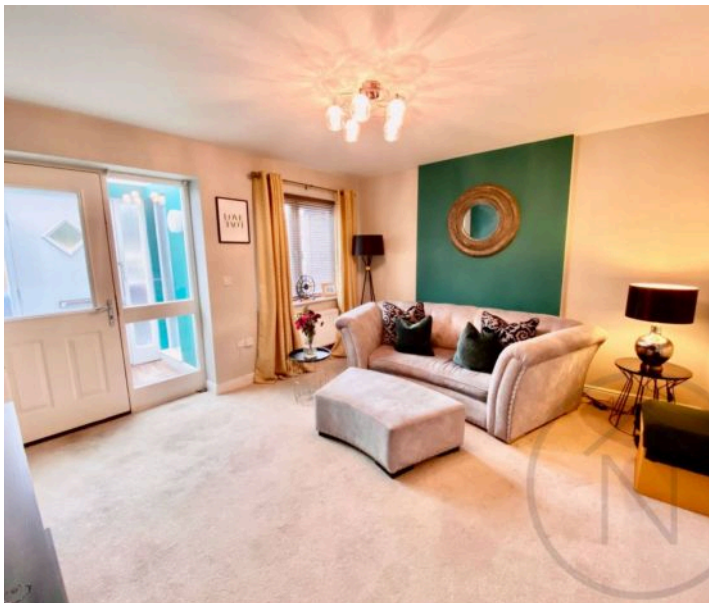
4' 11" x 3' 0" (1.50m x 0.91m)

Master Bedroom

11' 9" x 9' 11" (3.58m x 3.02m)

En-Suite

5' 0" x 5' 10" (1.52m x 1.78m)



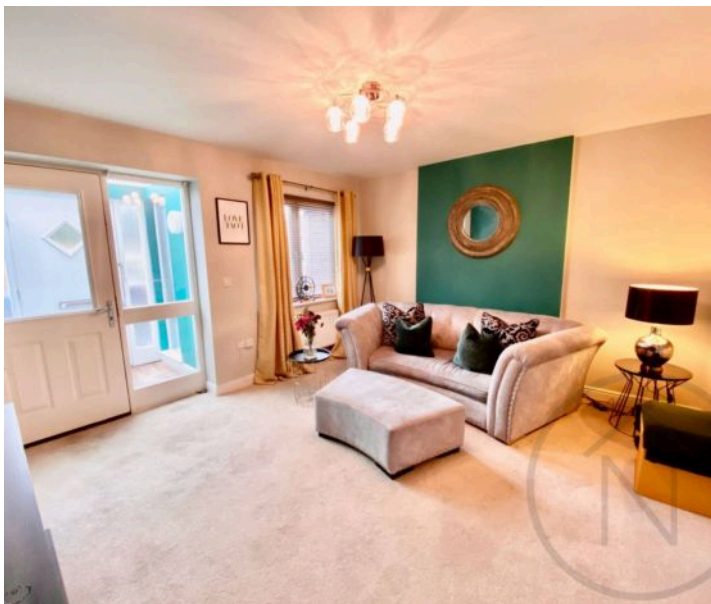


GARDEN

Enclosed rear garden mainly laid to lawn with patio area.

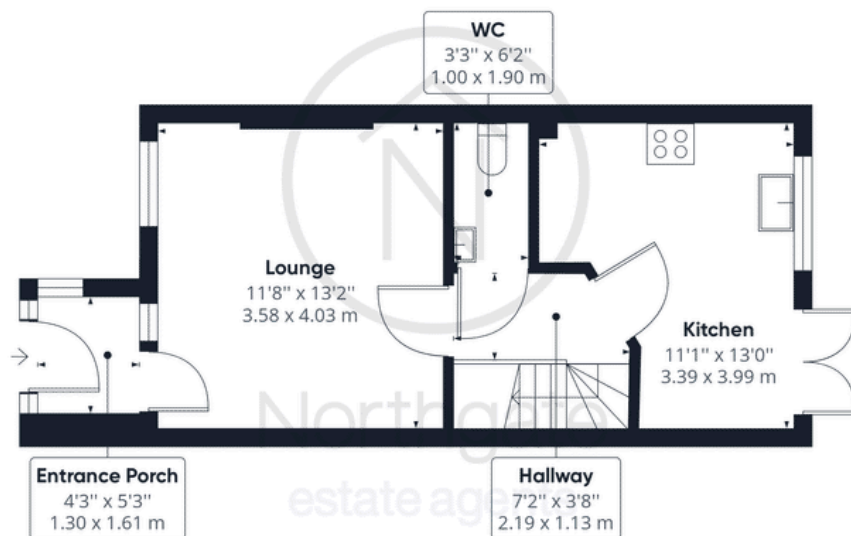
ALLOCATED PARKING

1 Parking Space









Ground Floor



Floor 1



Floor 2



Approximate total area⁽¹⁾

931.00 ft²

86.49 m²

(1) Excluding balconies and terraces

While every attempt has been made to ensure accuracy, all measurements are approximate, not to scale. This floor plan is for illustrative purposes only.

GIRAFFE360



Northgate - County Durham

Suite 3, Avenue House, Greenwell Road, Newton Aycliffe - DL5 4DH

01325 728333 • info@northgates.net • www.northgates.co.uk/



These particulars do not constitute, nor constitute part of, an offer or contract. No warranties are provided. Verify details through inspection. Northgate estate agents, nor any person in their employment has any authority to make or give any representation or warranty whatever in the relation to this property. All measurements are approximate.