



Heatherburn Court, Newton Aycliffe

Newton Aycliffe



Offers in Region of £68,000



65 Heatherburn Court

Newton Aycliffe, Newton Aycliffe

An Immaculately Presented One Bedroom House situated in the desirable area of Woodham. Chain Free with an allocated parking space in a private and quiet cul-de-sac. Beautifully decorated throughout, with access to a large shared garden and private outside shed. Plenty of storage space in the large loft. Ideal for a first time buyer or investment opportunity. Finished to a very high standard, this property features modern comforts, including gas central heating via a combi boiler and UPVC double glazing. Sofa, Fridge/Freezer, Washing Machine, Radiator Covers, Carpets and Curtains & Blinds all included in the sale.

In Brief, the Property Comprises:

- Entrance
- Lounge
- Modern Fitted Kitchen
- Shower Room
- Bedroom
- Large Shared Gardens

With No Onward Chain, this home is perfect for those looking for a smooth purchase or investment.

Council Tax band: A

Tenure: Freehold

- Immaculate One Bedroom Freehold House Located in Woodham Village. Ideal First Time Buyer/ Investor Property ****CHAIN FREE****
- Beautiful Modern Fitted Kitchen & Bathroom
- Spacious Bedroom, Gas Central Heating & Double Glazing
- Parking Space Desirable & Quiet Location Large Shared Garden



Hallway

11'6 x 6'0 (3.53 x 1.83m)

Living Room

8'7 x 12'4 (2.64 x 3.76m)

Kitchen

7'2 x 5'11 (2.20 x 1.82m)

Landing

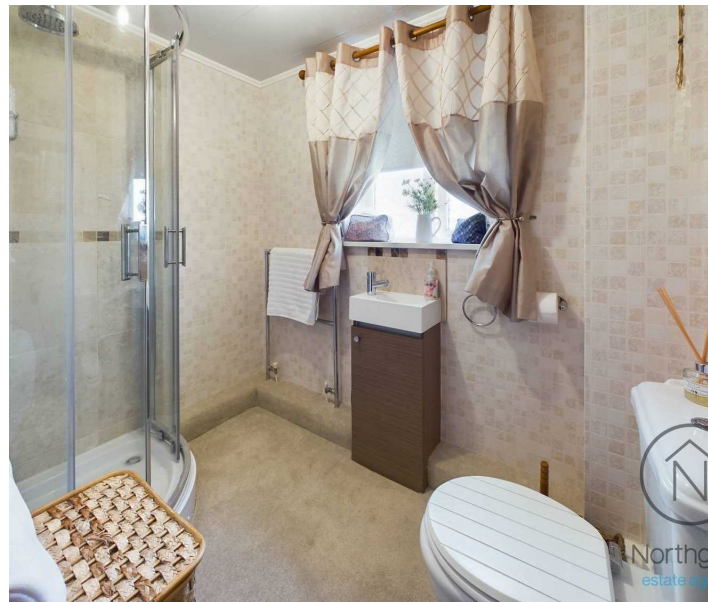
7'4 x 3'5 (2.24 x 1.05m)

Bedroom

8'6 x 12'4 (2.61 x 3.77m)

Bathroom

7'3 x 4'11 (2.22 x 1.52m)





GARDEN

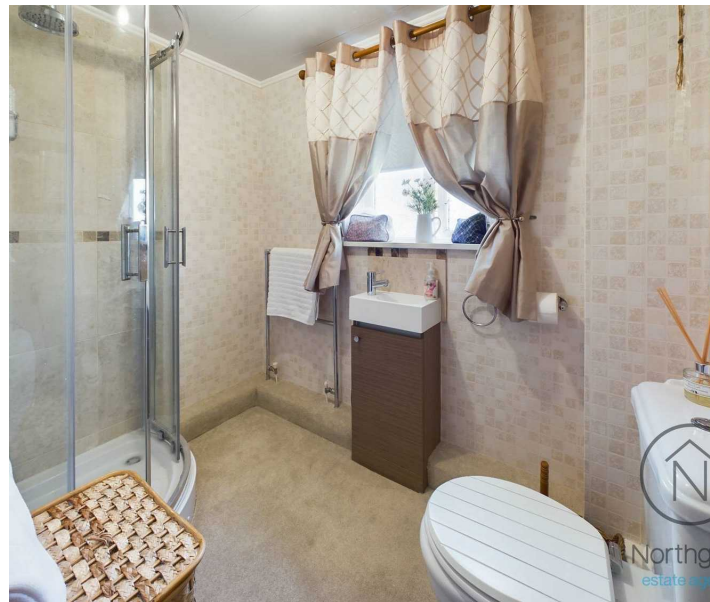
Shared Gardens

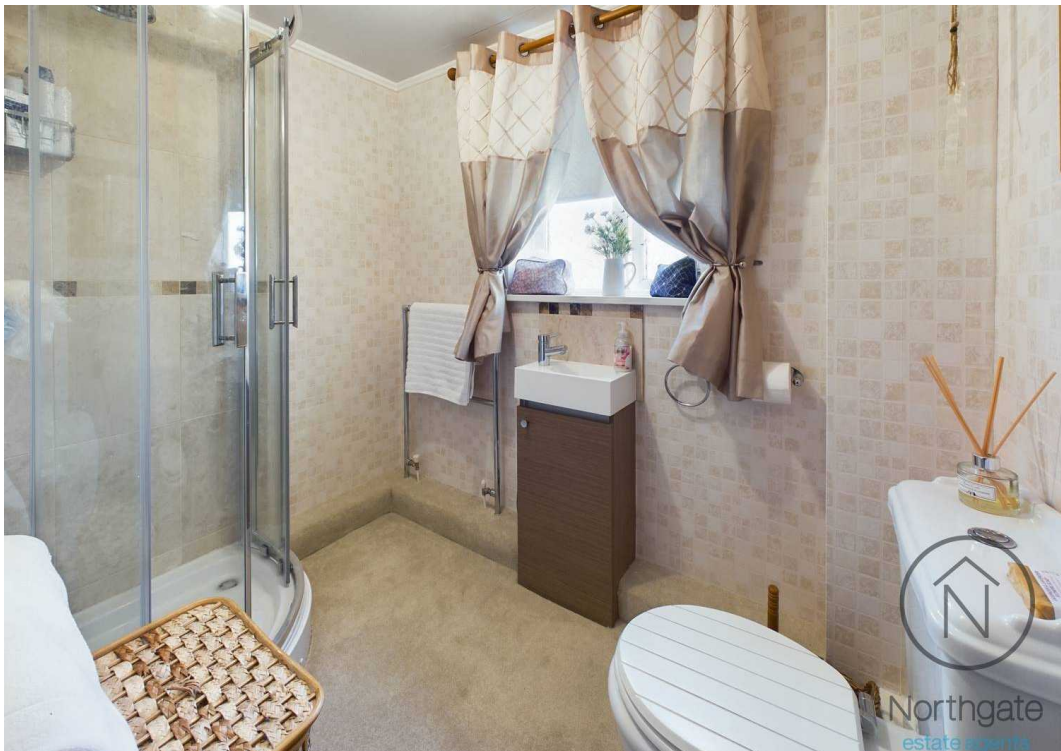
ALLOCATED PARKING

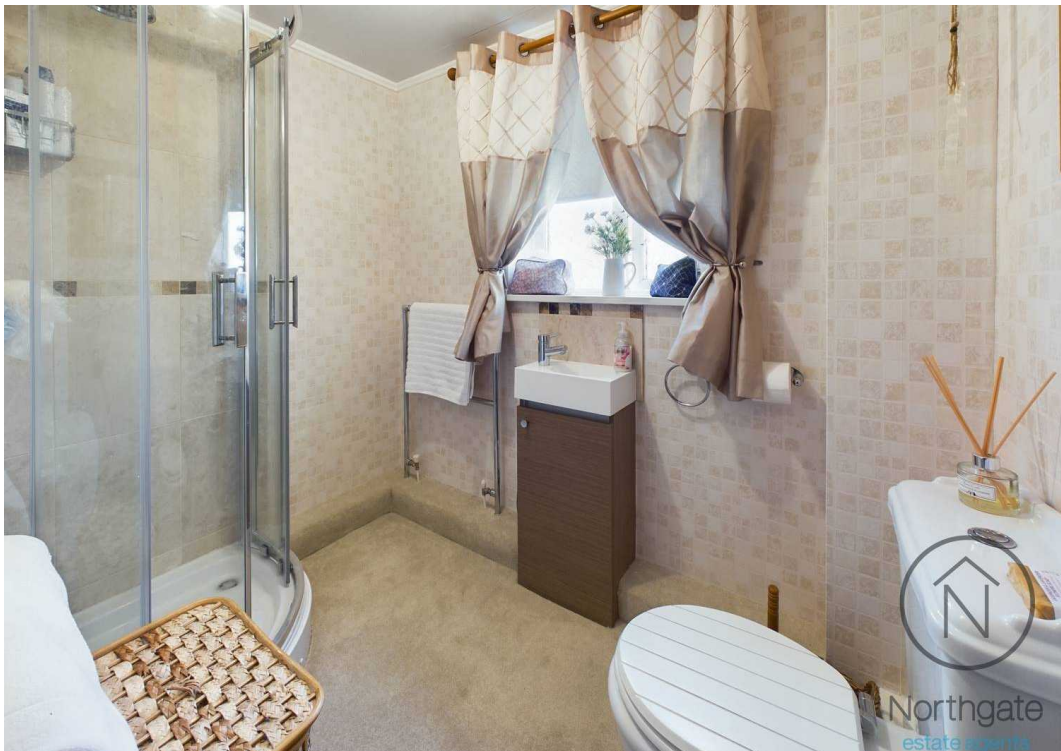
1 Parking Space

ALLOCATED PARKING

1 Parking Space

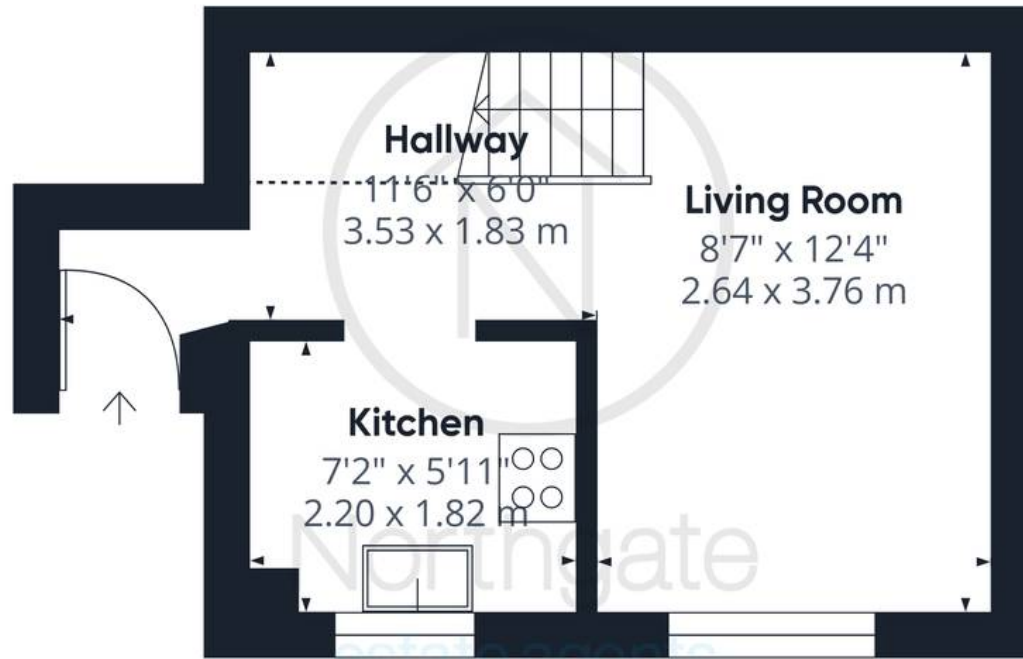








Northgate
estate agents



Approximate total area⁽¹⁾

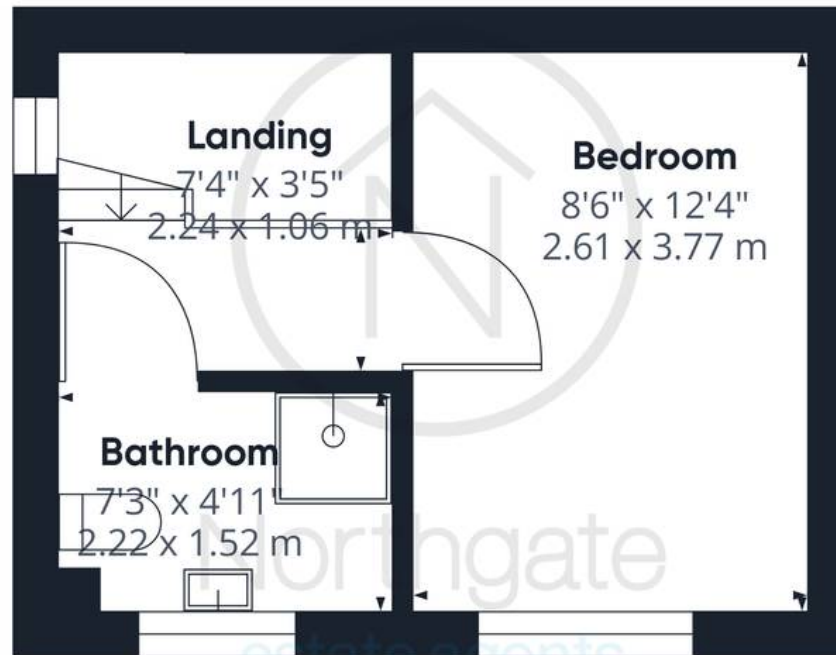
373.72 ft²

34.72 m²

Reduced headroom

21.74 ft²

2.02 m²



(1) Excluding balconies and terraces

Reduced headroom

..... Below 5 ft/1.5 m

While every attempt has been made to ensure accuracy, all measurements are approximate, not to scale. This floor plan is for illustrative purposes only.

Calculations are based on RICS IPMS 3C standard.

GIRAFFE360



Northgate - County Durham

Northgate Estate Agents, Suite 3 - DL5 4DH

01325 728333 • info@northgates.net • www.northgates.co.uk/



These particulars do not constitute, nor constitute part of, an offer or contract. No warranties are provided. Verify details through inspection. Northgate estate agents, nor any person in their employment has any authority to make or give any representation or warranty whatever in the relation to this property. All measurements are approximate.