



Haxby Road, Middleton St. George

Darlington



Offers Invited between £115,000 and £125,000



3 Haxby Road

Middleton St. George, Darlington

Offers Invited between £115,000 and £125,000 - Situated in the charming village of Middleton St George near Darlington, this delightful two-bedroom semi-detached home offers a wonderful opportunity for those looking to create their perfect living space. Upon entering the property, you are greeted by a small entrance hall leading to the stairs to the first-floor landing and a door opening into the welcoming lounge. The lounge boasts a feature electric fire and a bay window. The adjacent kitchen is fitted with a modern range of basin eye-level units and ample worktop space, along with a built-in electric oven and hob.

Ascending to the first-floor landing, you will find the master bedroom complete with built-in storage, and second bedroom to the rear. The family bathroom features a bath with a shower over, wash hand basin, and WC. Externally, the property benefits from a block-paved drive to the side and a yard to the rear, providing convenient off-road parking and outdoor space. Offered with no onward chain, this property presents a fantastic opportunity for new owners to modernise and put their personal stamp on this lovely home, making it a truly special place to call their own.

Council Tax band: A

Tenure: Freehold

- Two Bedroom Semi Detached Home
- Entrance Hall, Lounge, Kitchen
- Two Bedrooms & Family Bathroom
- Externally Block Paved Drive To Side and Yard To Rear.
- No Onward Chain - a fantastic opportunity to modernise and add your personal touch to this property.



Hallway:

Living Room:

15'0" x 12'9" (4.52 x 3.90 m)

First Floor:

Bedroom One:

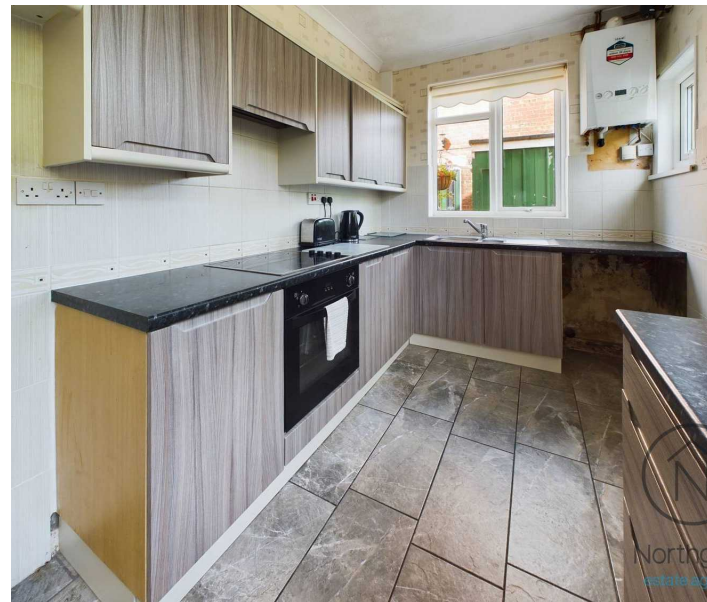
10'0" x 12'7" (3.12 x 3.84 m)

Bedroom Two:

8'0" x 13'10" (2.30 x 4.24 m)

Bathroom

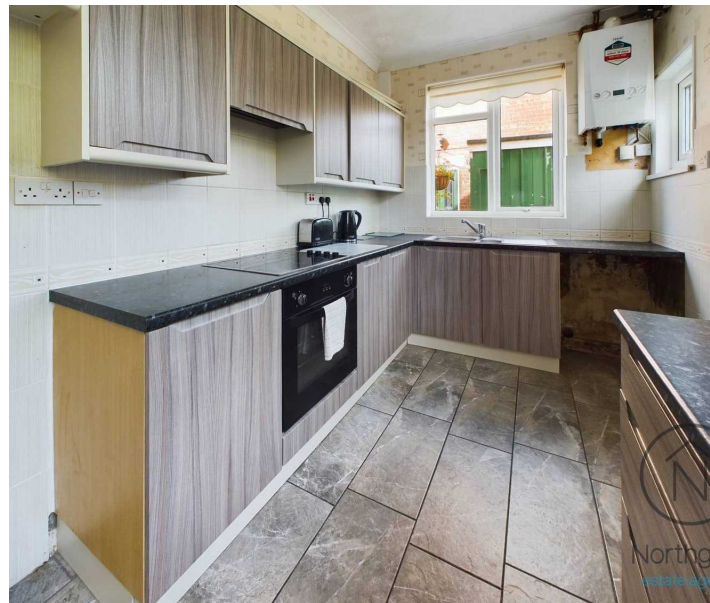
8'0" x 5'9" (2.55 x 1.78 m)

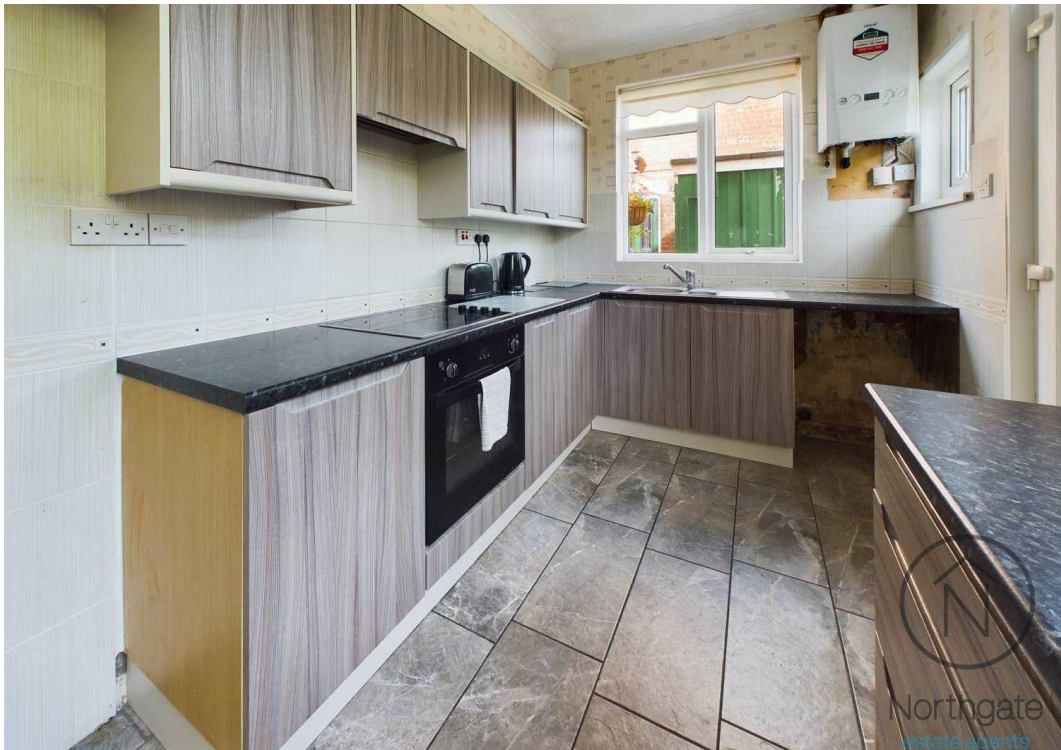


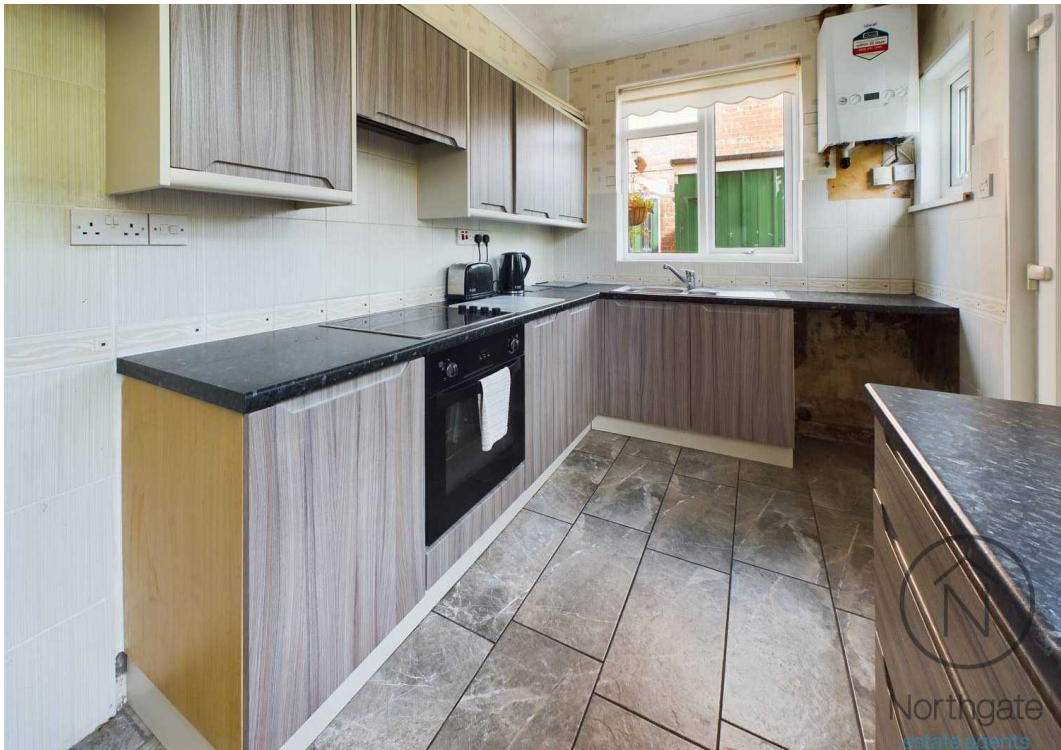


YARD

OFF STREET

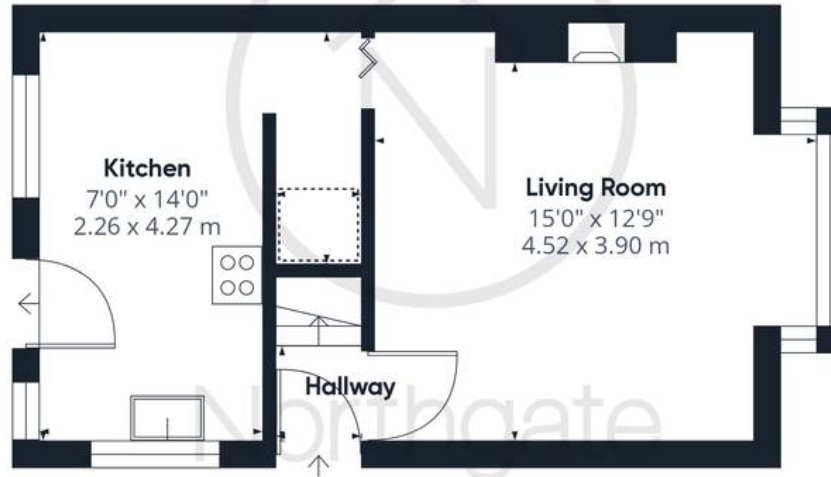








Northgate
estate agents



Ground Floor



Floor 1

Approximate total area⁽¹⁾

620 ft²

57.6 m²

Reduced headroom

6.78 ft²

0.63 m²

(1) Excluding balconies and terraces

☐ Reduced headroom
(below 1.5m/4.92ft)

While every attempt has been made to ensure accuracy, all measurements are approximate, not to scale. This floor plan is for illustrative purposes only.

GIRAFFE360



Northgate - County Durham

Northgate Estate Agents, Suite 3 - DL5 4DH

01325 728333 • info@northgates.net • www.northgates.co.uk/



These particulars do not constitute, nor constitute part of, an offer or contract. No warranties are provided. Verify details through inspection. Northgate estate agents, nor any person in their employment has any authority to make or give any representation or warranty whatever in the relation to this property. All measurements are approximate.