



Millbank, Heighington Village

Newton Aycliffe



£199,950



21 Millbank

Heighington Village, Newton Aycliffe

Situated in Heighington village, this charming Three Bedroom Mid Terrace Cottage offers a delightful living experience for discerning homeowners. The property welcomes you through an entrance vestibule leading into a cosy living room with log burning stove and a separate dining room, perfect for entertaining guests or enjoying family dinners. The modern fitted kitchen boasts integrated appliances, catering to the needs of contemporary living. Ascend to the first floor landing where you will find three generously sized bedrooms and a well-appointed family bathroom, ensuring ample space for rest and relaxation.

Externally The enclosed rear garden is a tranquil oasis, featuring a shingle seating area accessible from the French doors leading to steps with a balustrade that ascend to a raised lawn space. A second, paved seating terrace, surrounded by sleeper beds bordering stocked flower beds that add a touch of natural beauty, a garden gate located at the side of the garden provides access. Council Tax band: C

Tenure: Freehold

- Three Bedroom Mid Terrace Cottage, situated in the popular Heighington village
- Entrance vestibule, living room, dining room, modern fitted kitchen with integrated appliances.
- First floor landing leading to 3 general size bedrooms and a family bathroom
- Externally Garden to rear
- Energy efficiency rate: D



Entrance vestibule

3'11" x 3'3" (1.22 x 0.99 m)

Living Room:

14'8" x 15'9" (4.49 x 4.80 m)

Dining Room:

9'10" x 12'0" (3.01 x 3.67 m)

Kitchen:

10'10" x 7'2" (3.31 x 2.21 m)

Bedroom One:

14'10" x 8'1" (4.53 x 2.48 m)

Bedroom Two:

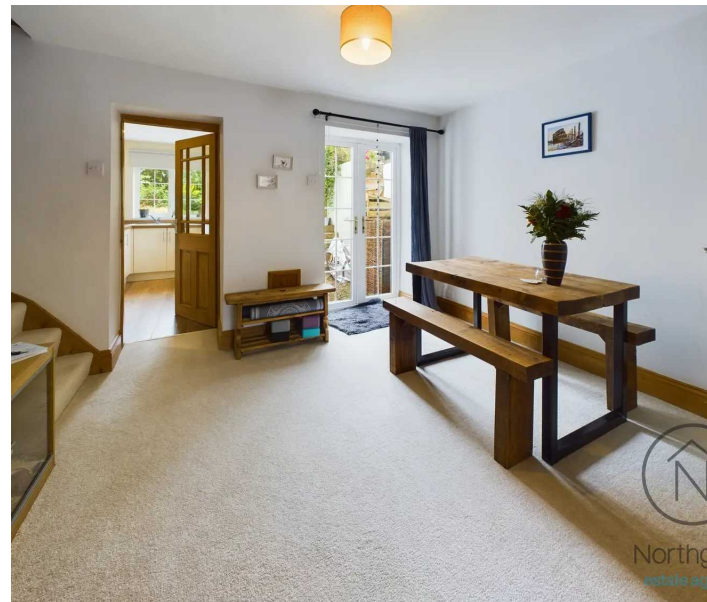
14'9" x 7'2" (4.50 x 2.19 m)

Bedroom Three:

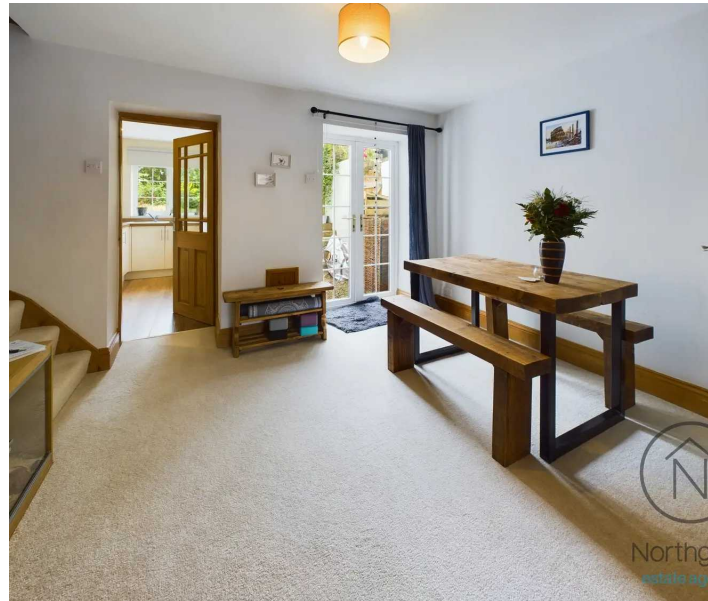
11'5" x 7'7" (3.50 x 2.33 m)

Bathroom:

7'4" x 9'2" (2.26 x 2.79 m)



GARDEN









Northgate
estate agents



Ground Floor



Floor 1

Approximate total area⁽¹⁾

951.95 ft²


88.44 m²

Reduced headroom

10.6 ft²

0.98 m²

(1) Excluding balconies and terraces

 Reduced headroom
(below 1.5m/4.92ft)

While every attempt has been made to ensure accuracy, all measurements are approximate, not to scale. This floor plan is for illustrative purposes only.

GIRAFFE360



Northgate - County Durham

Northgate Estate Agents, Suite 3 - DL5 4DH

01325 728333 • info@northgates.net • www.northgates.co.uk/



These particulars do not constitute, nor constitute part of, an offer or contract. No warranties are provided. Verify details through inspection. Northgate estate agents, nor any person in their employment has any authority to make or give any representation or warranty whatever in the relation to this property. All measurements are approximate.