



Hunters Green, Newton Aycliffe

Newton Aycliffe



In Excess of £265,000



8 Hunters Green

Newton Aycliffe, Newton Aycliffe

Situated in a sought-after residential area, this impressive four-bedroom detached family home offers spacious and modern living accommodation suitable for a growing family. Upon entering the property, you are welcomed into a bright and airy entrance hall leading to the various ground floor rooms.

The lounge is a fantastic space featuring a stylish fireplace with surround, creating a cosy atmosphere ideal for relaxing evenings with family and friends. The modern fitted kitchen is a standout feature of the property, boasting integrated appliances and a dining area, perfect for hosting meals and entertaining.

Further accommodation on the ground floor includes a versatile living room which can also function as a fifth bedroom or home office, formerly the garage. A utility room and a convenient ground floor W.C. add to the practicality of this home.

Moving upstairs, you will find three generously sized double bedrooms and one single bedroom. Two of the double bedrooms benefit from ensuite shower rooms, while all residents can make use of the modern newly fitted family bathroom.

Externally, the property boasts a landscaped front garden, a double block-paved driveway, and side access providing additional parking options for multiple vehicles and potential to extend subject to necessary planning and building consents. The rear garden is a true haven, featuring a patio perfect for outdoor dining, a lush lawn for children to play on, a pond with a water feature creating a tranquil ambience, decking area ideal for



Lounge:

13'1" x 14'3" (4.01 x 4.35 m)

Kitchen/Diner:

10'8" x 17'6" (3.25 x 5.35 m)

Living Room, Fifth Bedroom Or Home Office:

13'3" x 8'7" (4.07 x 2.62 m)

Utility room:

6'0" x 8'10" (1.85 x 2.71 m)

WC:

4'2" x 5'4" (1.28 x 1.63 m)

Bedroom One:

11'5" x 9'11" (3.48 x 3.03 m)

Ensuite Shower:

2'7" x 8'5" (0.81 x 2.57 m)

Bedroom Two:

14'1" x 9'4" (4.31 x 2.84 m)

Shower Room:

6'9" x 2'10" (1.39 x 0.86 m)

Bedroom Three:

10'1" x 10'5" (3.07 x 3.18 m)

Bedroom Four:

8'7" x 7'7" (2.62 x 2.31 m)

Bathroom:

6'5" x 6'8" (2.05 x 2.04 m)

Summer House:

10'6" x 11'3" (3.21 x 3.44 m)

Decking Area:

14'11" x 8'1" (4.55 x 2.48 m)

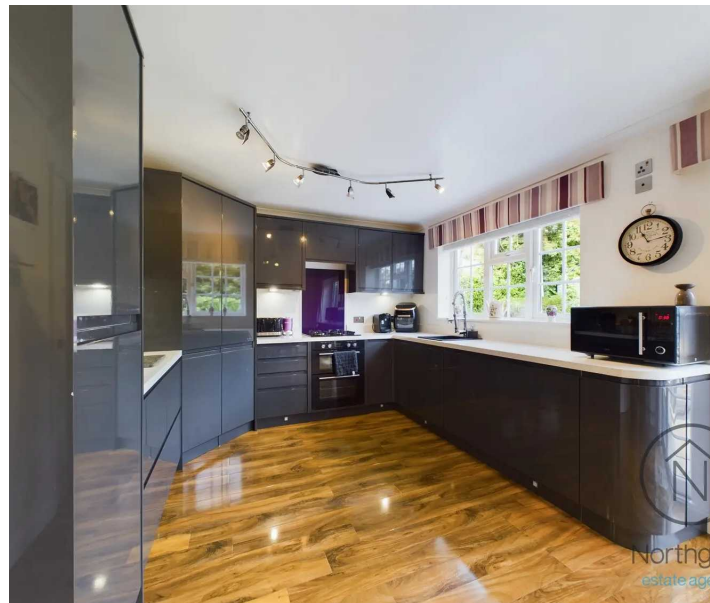


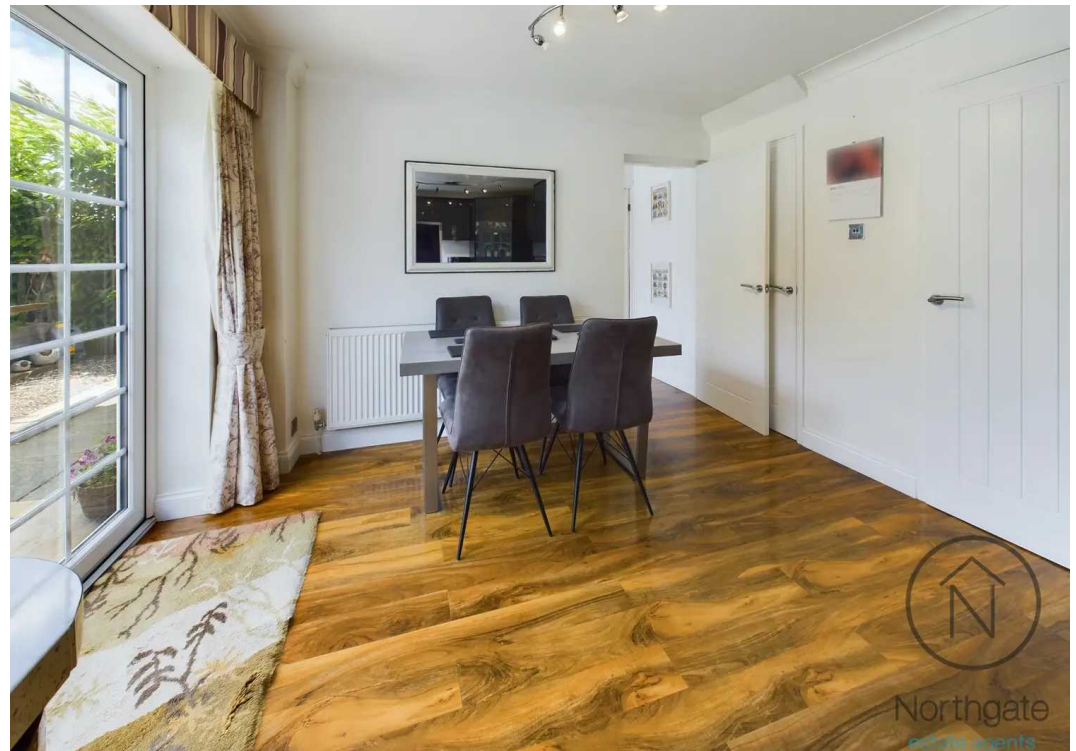


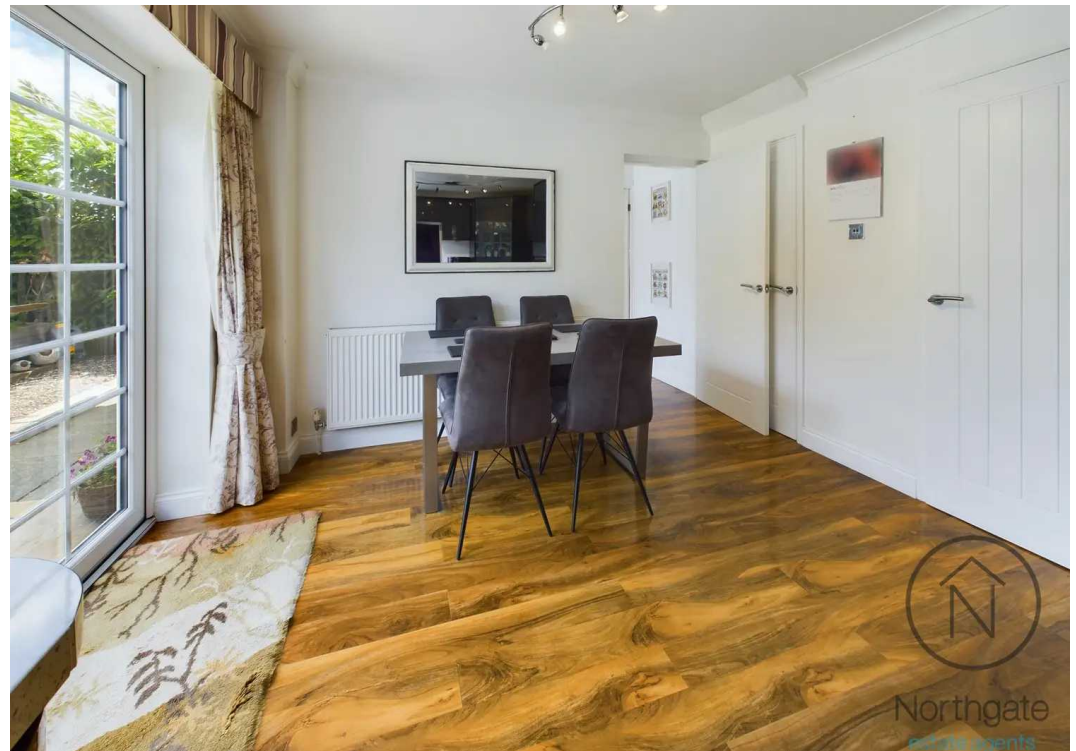
GARDEN

DRIVEWAY

4 Parking Spaces









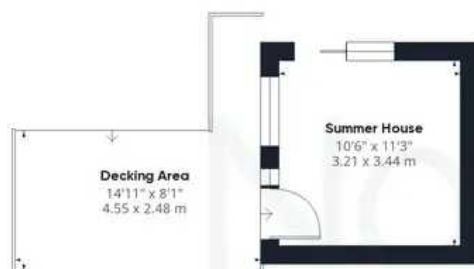
Northgate
estate agents



Ground Floor Building 1



Floor 1 Building 1



Ground Floor Building 2

Approximate total area⁽¹⁾

1303.76 ft²

121.12 m²

(1) Excluding balconies and terraces

While every attempt has been made to ensure accuracy, all measurements are approximate, not to scale. This floor plan is for illustrative purposes only.

GIRAFFE360



Northgate - County Durham

Northgate Estate Agents, Suite 3 - DL5 4DH

01325 728333 • info@northgates.net • www.northgates.co.uk/



These particulars do not constitute, nor constitute part of, an offer or contract. No warranties are provided. Verify details through inspection. Northgate estate agents, nor any person in their employment has any authority to make or give any representation or warranty whatever in the relation to this property. All measurements are approximate.