



The Bridle, Newton Aycliffe

Newton Aycliffe



In Excess of £390,000





## 21 The Bridle

Newton Aycliffe, Newton Aycliffe

Welcome to this large four-bedroom detached family home, perfectly situated in the desirable area of Woodham. The property offers spacious and versatile living spaces.

On the ground floor, you'll find a welcoming entrance vestibule that leads to a large entrance hall with stairs to the first floor. The spacious living room benefits from ample natural light, and double doors open to a dining room, which has access to a large conservatory through sliding patio doors. The expansive conservatory overlooks the garden and is perfect for relaxation and entertaining. The kitchen features a central island and a range of appliances. Additionally, there is a versatile room that can serve as a study or crafts room, a convenient utility room, and w.c. with wash hand basin.

The first floor includes a generous master bedroom with built-in wardrobes, and ensuite shower room. Two additional double bedrooms, and one single bedroom, all with built-in wardrobes. The family bathroom completes the first floor.

Externally, the property boasts a block-paved driveway leading to a large integral garage. The front garden is well-maintained with a lawn area and a variety of shrubs and trees. The large rear garden features a patio area, lawn, and planted beds with a variety of plants, shrubs and trees. Additionally, there is a greenhouse and a vegetable planting area.

This exceptional property with a prime location, making it an ideal family home with great potential to make it your own. Contact us today to arrange a viewing.

Council Tax band: F





#### Entrance

2' 10" x 7' 10" (0.87m x 2.39m)

#### Hallway

11' 9" x 12' 8" (3.57m x 3.85m)

#### Living Room

18' 9" x 12' 1" (5.72m x 3.69m)

#### Dining Room

11' 4" x 11' 7" (3.45m x 3.52m)

#### Conservatory

10' 9" x 32' 9" (3.28m x 9.99m)

#### Study/Crafts Room

11' 2" x 8' 11" (3.40m x 2.71m)

#### Kitchen

14' 6" x 13' 2" (4.41m x 4.02m)

#### Utility room

6' 5" x 6' 11" (1.95m x 2.12m)

#### WC

4' 7" x 3' 3" (1.39m x 0.99m)

#### Landing

#### Bedroom One

12' 7" x 11' 9" (3.84m x 3.59m)

#### En-suite

6' 0" x 8' 4" (1.82m x 2.54m)

#### Bedroom Two

13' 0" x 12' 1" (3.95m x 3.69m)

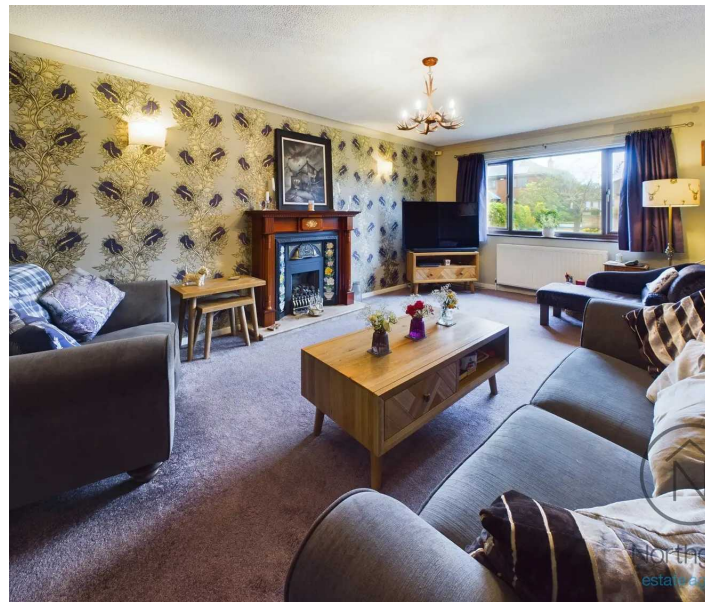
#### Bedroom Three

10' 11" x 13' 7" (3.32m x 4.15m)

#### Bedroom Four

11' 7" x 7' 0" (3.54m x 2.13m)

#### Family Bathroom







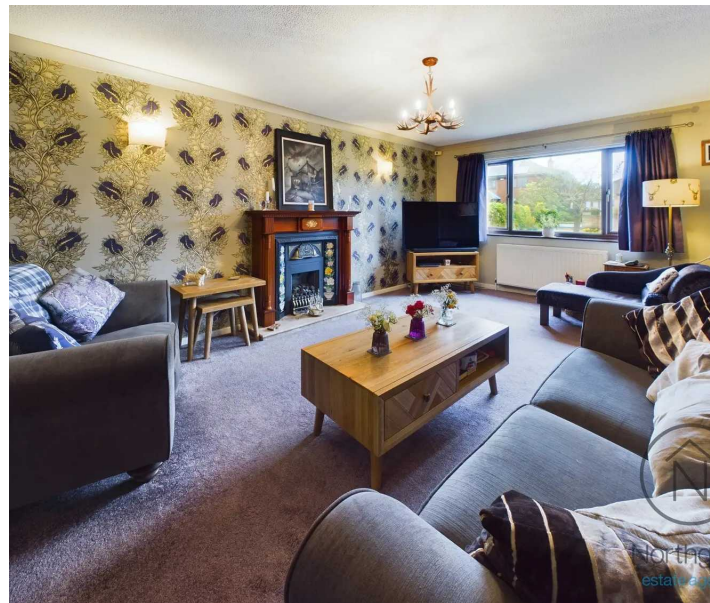
**GARDEN**

**GARAGE**

Double Garage

**DRIVEWAY**

2 Parking Spaces







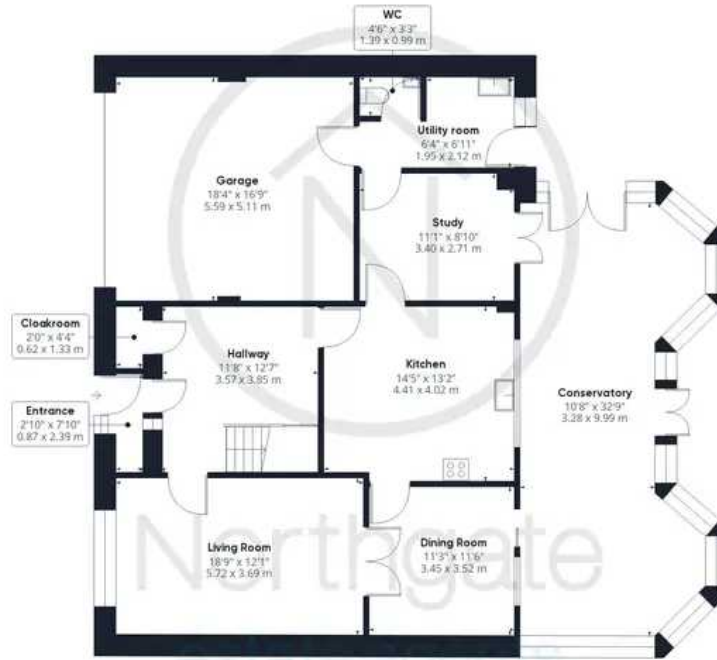








Northgate  
estate agents



Ground Floor



Floor 1

Approximate total area<sup>(1)</sup>

2471.55 ft<sup>2</sup>

229.61 m<sup>2</sup>

(1) Excluding balconies and terraces

While every attempt has been made to ensure accuracy, all measurements are approximate, not to scale. This floor plan is for illustrative purposes only.

GIRAFFE360





## Northgate - County Durham

Northgate Estate Agents, Suite 3 - DL5 4DH

01325 728333 • [info@northgates.net](mailto:info@northgates.net) • [www.northgates.co.uk/](http://www.northgates.co.uk/)



These particulars do not constitute, nor constitute part of, an offer or contract. No warranties are provided. Verify details through inspection. Northgate estate agents, nor any person in their employment has any authority to make or give any representation or warranty whatever in the relation to this property. All measurements are approximate.