



Mulgrave Court, Newton Aycliffe

Newton Aycliffe



In Excess of £210,000



5 Mulgrave Court

Newton Aycliffe, Newton Aycliffe

Located in a sought-after woodland area, this two-bedroom detached bungalow provides a peaceful living environment with easy access to nearby amenities. The entrance porch leads directly into a cozy living room, an ideal space for relaxation. The adjoining dining room offers a functional space for meals.

The conservatory, filled with natural light, offers lovely views of the garden, creating a quiet space for enjoying different seasons. The kitchen is practical and well-equipped, featuring base and eye-level cabinets, sufficient worktop space, and integrated appliances.

The shower room is equipped with shower with glass screen, a vanity wash basin and WC. Externally, the property includes well-kept gardens with a variety of shrubs and trees, providing a private and pleasant outdoor area. A driveway leads up to a single garage, offering convenient parking or additional storage.

This bungalow is perfect for those looking for a simple and quiet lifestyle. It's well-suited for a small family, a couple, or someone seeking a peaceful home and For Sale with no onward chain.

Council Tax band: C

Tenure: Freehold



Entrance Porch:

2'9" x 5'5" (0.85 x 1.67 m)

Living Room:

14'3" x 13'5" (4.35 x 4.11 m)

Dining Room:

10'11" x 8'6" (3.35 x 2.60 m)

Conservatory:

11'2" x 15'9" (3.42 x 4.82 m)

Kitchen:

10'11" x 7'10" (3.34 x 2.40 m)

Hallway:

6'10" x 3'0" (2.09 x 0.91 m)

Bedroom 1:

10'2" x 10'11" (3.11 x 3.08 m)

Bedroom 2:

8'0" x 7'10" (2.45 x 2.41 m)

Shower Room:

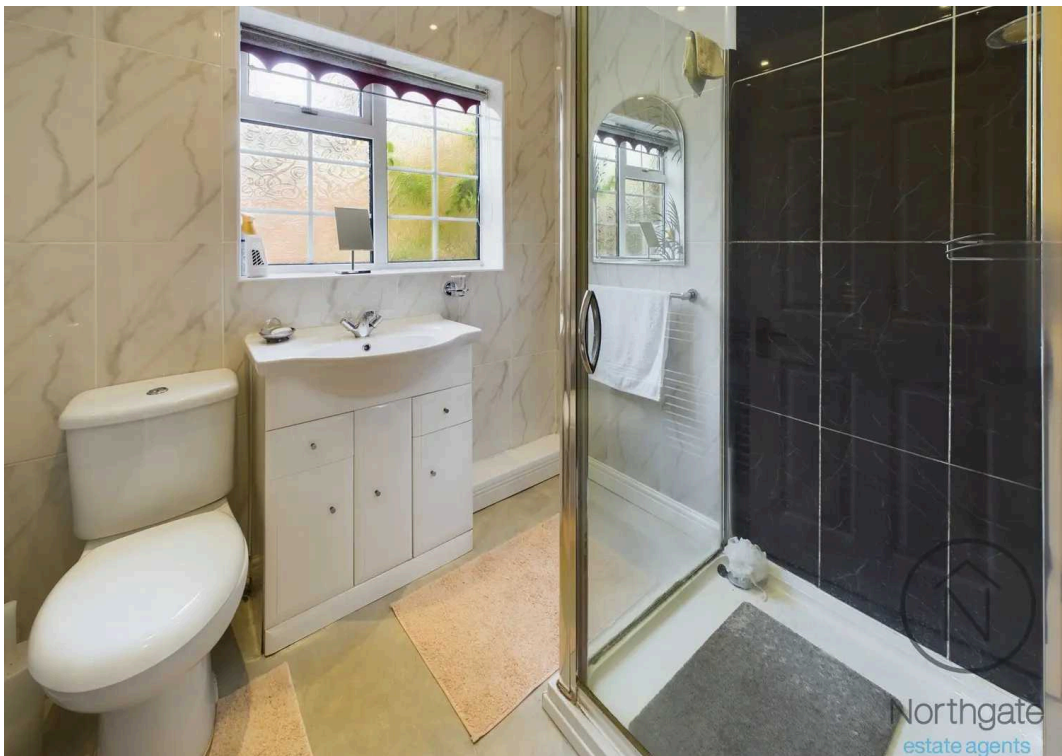
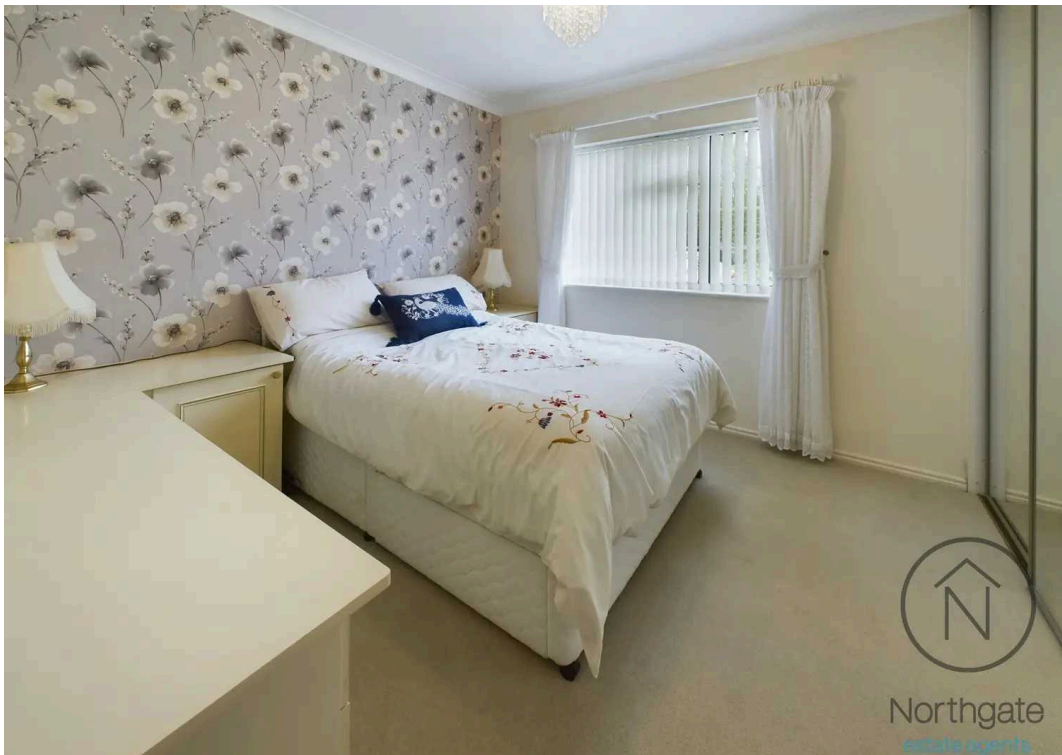
6'7" x 6'0" (2.02 x 1.85 m)

Garage:

16'8" x 8'11" (5.09 x 2.49 m)

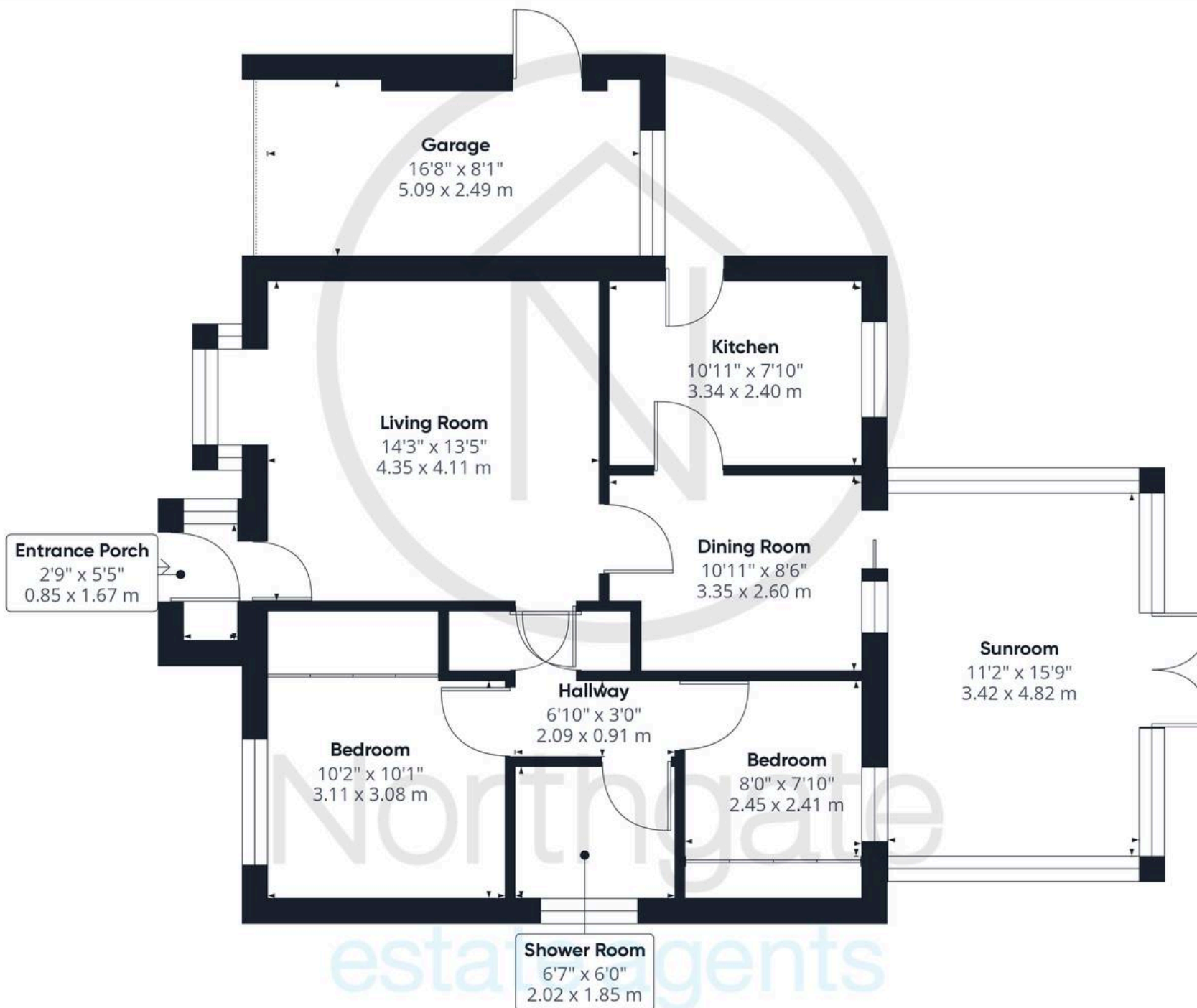


- Two-Bedroom Detached Bungalow in Woodland Area
- Generous living and sunroom areas.
- Kitchen with Integrated Appliances
- Shower Room
- Drive Way, Garage & Gardens
- Energy efficiency rating: TBC





Northgate
estate agents



Approximate total area⁽¹⁾

1001.13 ft²

93.01 m²

(1) Excluding balconies and terraces

While every attempt has been made to ensure accuracy, all measurements are approximate, not to scale. This floor plan is for illustrative purposes only.

GIRAFFE 360



Northgate - County Durham

Northgate Estate Agents, Suite 3 - DL5 4DH

01325 728333 • info@northgates.net • www.northgates.co.uk/



These particulars do not constitute, nor constitute part of, an offer or contract. No warranties are provided. Verify details through inspection. Northgate estate agents, nor any person in their employment has any authority to make or give any representation or warranty whatever in the relation to this property. All measurements are approximate.