



39 Cypress Grove, School Aycliffe
Newton Aycliffe



In Excess of £250,000



39 Cypress Grove

School Aycliffe, Newton Aycliffe

Offers Invited between £250,000 to £260,000 -
Introducing this Four Bedroom Detached Family Home, perfectly positioned for comfortable living in a sought-after location of School Aycliffe. Upon entering the property, you are greeted by an inviting Entrance Porch leading to a spacious Hallway. The ground floor features a bright Lounge with a cosy fireplace, a Conservatory provides a tranquil space to enjoy views of the beautifully landscaped gardens, a Dining Room ideal for family meals, and a convenient W.C. Adding to the appeal is the fully equipped Kitchen offering appliances and ample storage. Upstairs, the property boasts a Ensuite to the Master Bedroom, along with the Family Bathroom serving the remaining bedrooms.

The well-maintained garden provides a serene escape for relaxation or entertaining. The Rear garden offers a perfect setting for al-fresco dining and enjoying the fresh air. Furthermore, the property features a Double Drive and a Single Garage measuring 17'6" x 8'1" (5.34 x 2.46 m), providing ample parking space for vehicles. Overall, this home is ideal for a growing family seeking comfort in a prime location. For further details or appointment to view, please contact Debbie Ladbury property consultant 01325 728337.

Council Tax band: D

Tenure: Freehold

- Four Bedroom Detached Family Home
- Lounge, Dining Room, GF W.C.
- Kitchen, Conservatory
- Ensuite To Master Bedroom, Family Bathroom
- Externally Double Drive, Single Garage, Gardens Front & Rear



Entrance Porch

Hallway

Living Room:

16'4" x 9'10" (4.99 x 3.01 m)

Conservatory:

10'0" x 9'4" (3.07 x 2.85 m)

Dining Room:

13'2" x 9'10" (4.01 x 3.00 m)

Kitchen:

8'9" x 16'3" (2.67 x 4.96 m)

WC:

5'2" x 3'1" (1.90 x 0.99 m)

First Floor Landing:

Bedroom One:

15'2" x 10'6" (4.64 x 3.22 m)

Ensuite:

9'1" x 5'11" (2.97 x 1.55 m)

Bedroom Two:

14'8" x 10'9" (4.47 x 3.26 m)

Bedroom Three:

10'0" x 11'2" (3.07 x 3.42 m)

Bedroom Four:

7'7" x 8'1" (2.32 x 2.49 m)

Bathroom:

5'7" x 6'9" (1.70 x 2.08 m)





GARDEN

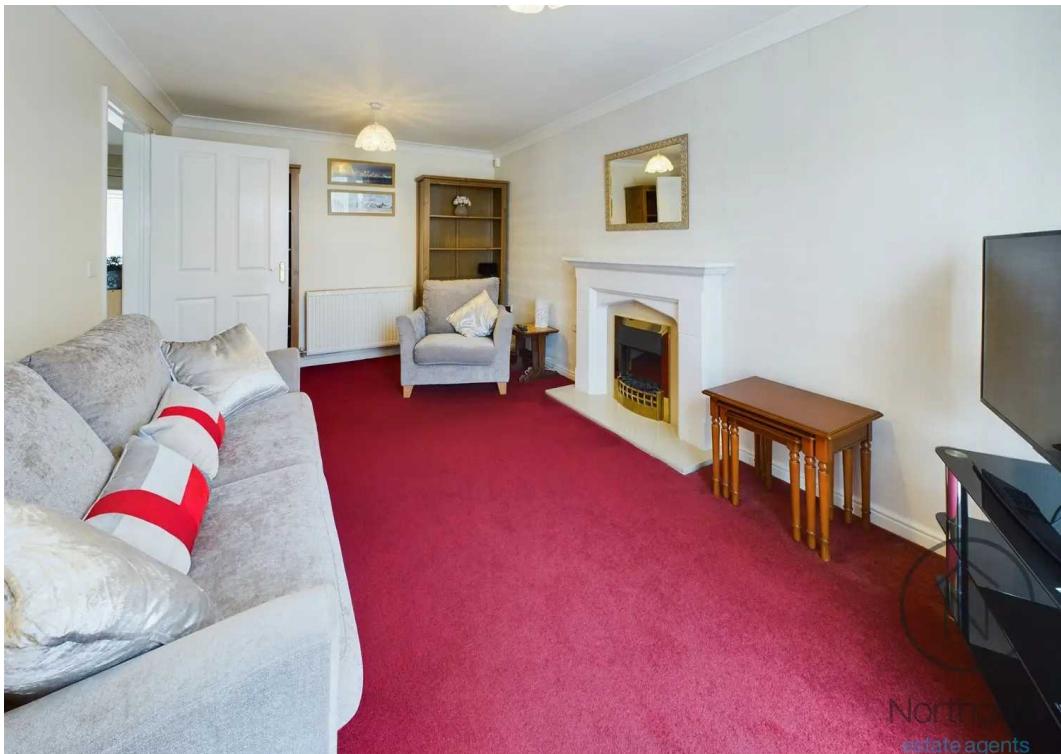
Front & Rear

DRIVEWAY

ON STREET

GARAGE

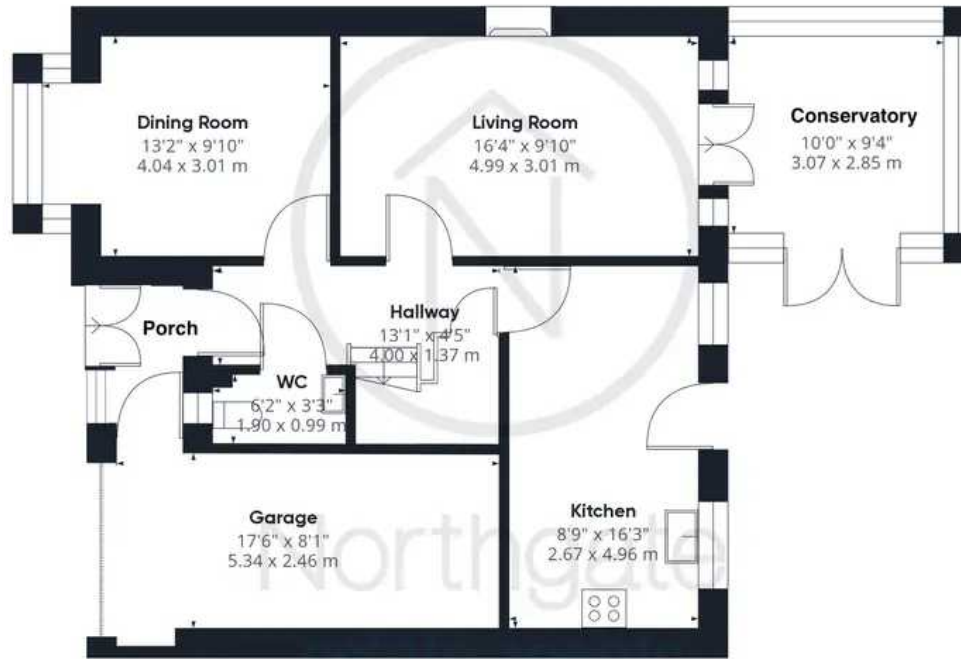




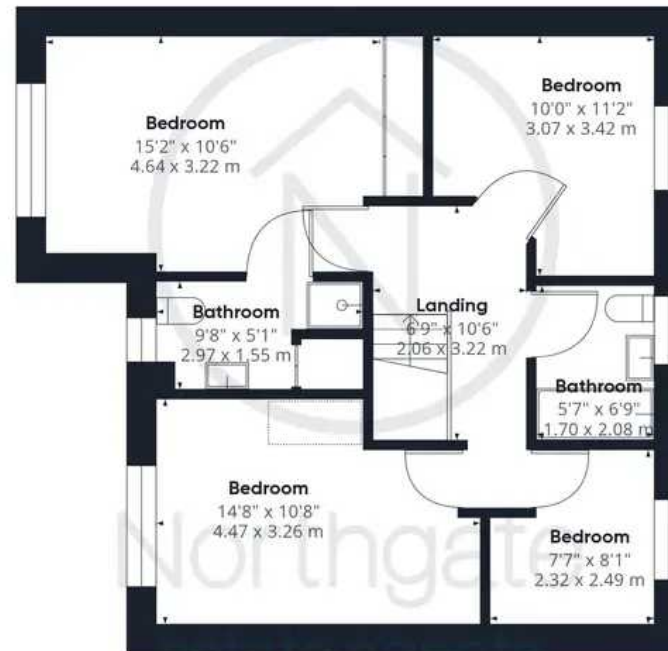




Northgate
estate agents



Ground Floor



Floor 1

Approximate total area⁽¹⁾

1414.16 ft²

131.38 m²

(1) Excluding balconies and terraces

While every attempt has been made to ensure accuracy, all measurements are approximate, not to scale. This floor plan is for illustrative purposes only.

GIRAFFE 360



Northgate - County Durham

Northgate Estate Agents, Suite 3 - DL5 4DH

01325 728333 • info@northgates.net • www.northgates.co.uk/



These particulars do not constitute, nor constitute part of, an offer or contract. No warranties are provided. Verify details through inspection. Northgate estate agents, nor any person in their employment has any authority to make or give any representation or warranty whatever in the relation to this property. All measurements are approximate.