



Northside
For Sale
01325 327566

NEW
ONWARD
CHAIN



Brook Close, Newton Aycliffe

Newton Aycliffe



Offers in excess of: £170,000



Brook Close

Newton Aycliffe, Newton Aycliffe

Nestled on a charming corner plot, this exceptional two-bedroom detached bungalow in the popular Woodham area of Newton Aycliffe presents a rare opportunity to acquire a property of elegance and comfort. As you step inside the hallway leads to a spacious living room boasts a welcoming atmosphere, ideal for relaxing with loved ones, the two well-appointed bedrooms provide ample accommodation, perfect for accommodating visiting guests. The kitchen leads to a sunroom offering an ideal further space for entertaining guests, The family shower room caters for the home.

Outside, the front garden is well presented adding to the property's kerb appeal and providing a lovely space for outdoor relaxation. The rear garden offers a private oasis, surrounded by mature shrubs and trees, creating a peaceful haven for you to enjoy the fresh air and soak in the beauty of nature. Whether you're hosting a garden party, tending to your plants, or simply basking in the sun, this outdoor space promises endless possibilities for recreation and serenity. With an array of seating areas, you can effortlessly entertain guests or savour moments of solitude in this idyllic setting. This property truly encapsulates the essence of modern living with a seamless blend of indoor comfort and outdoor charm, making it a place you'll be proud to call home. The home offers off street parking at the front and a garage to the rear providing ample space for vehicles.



Two Bedroom Detached Bungalow

Corner Plot

Drive & Garage

Sunroom To Rear

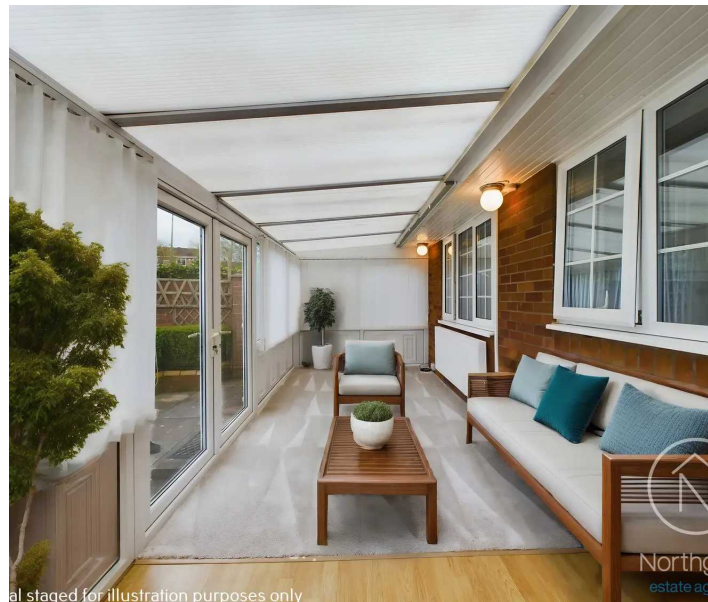
Private Rear Garden

Energy Rating: C

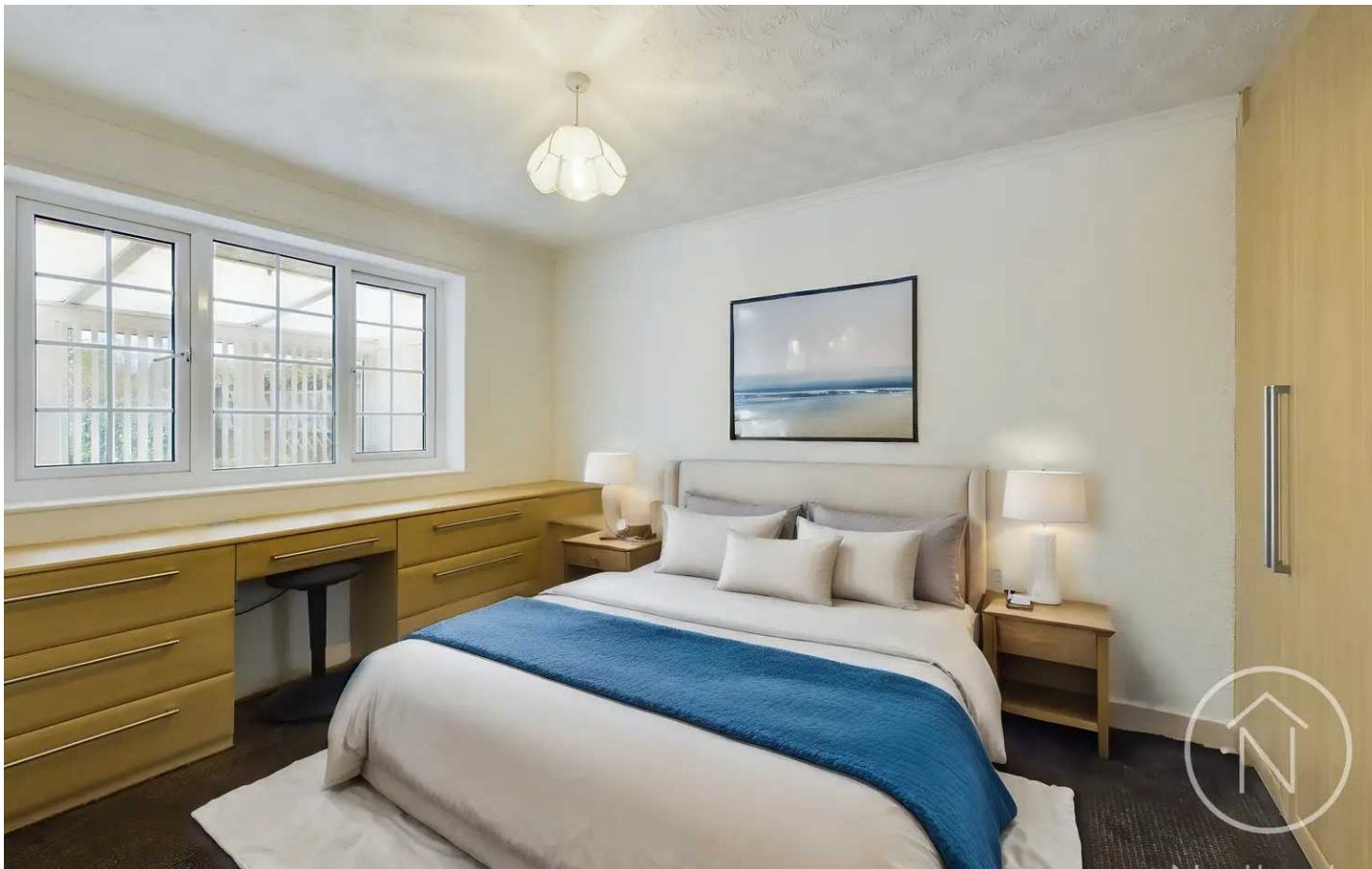
Council Tax band: C

Tenure: Freehold

* virtually staged photographs for illustration purposes only.



al staged for illustration purposes only



Hallway

4' 0" x 6' 5" (1.22m x 1.96m)

Bedroom 1

11' 7" x 9' 3" (3.53m x 2.82m)

Bedroom 2

10' 7" x 8' 4" (3.23m x 2.54m)

Bathroom

6' 4" x 5' 5" (1.93m x 1.65m)

Lounge

17' 2" x 11' 0" (5.23m x 3.35m)

Kitchen

7' 7" x 10' 2" (2.31m x 3.10m)

Sunroom

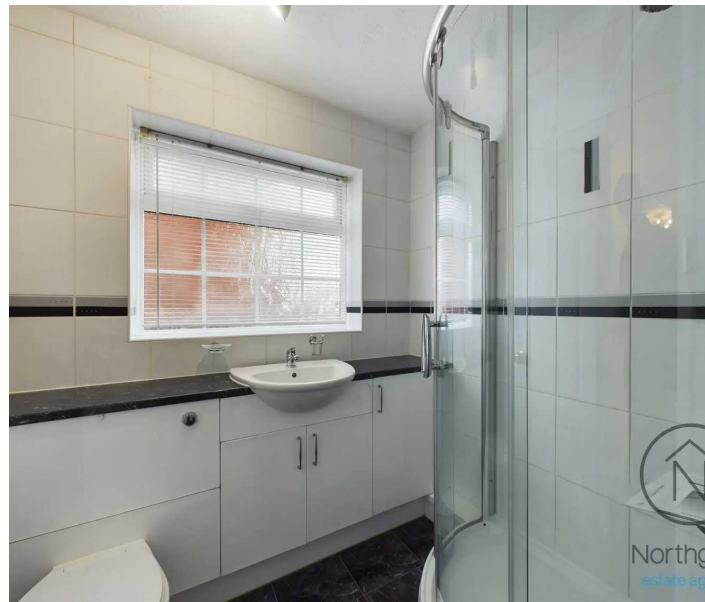
7' 5" x 19' 9" (2.26m x 6.02m)

Garage

16' 10" x 8' 2" (5.13m x 2.49m)



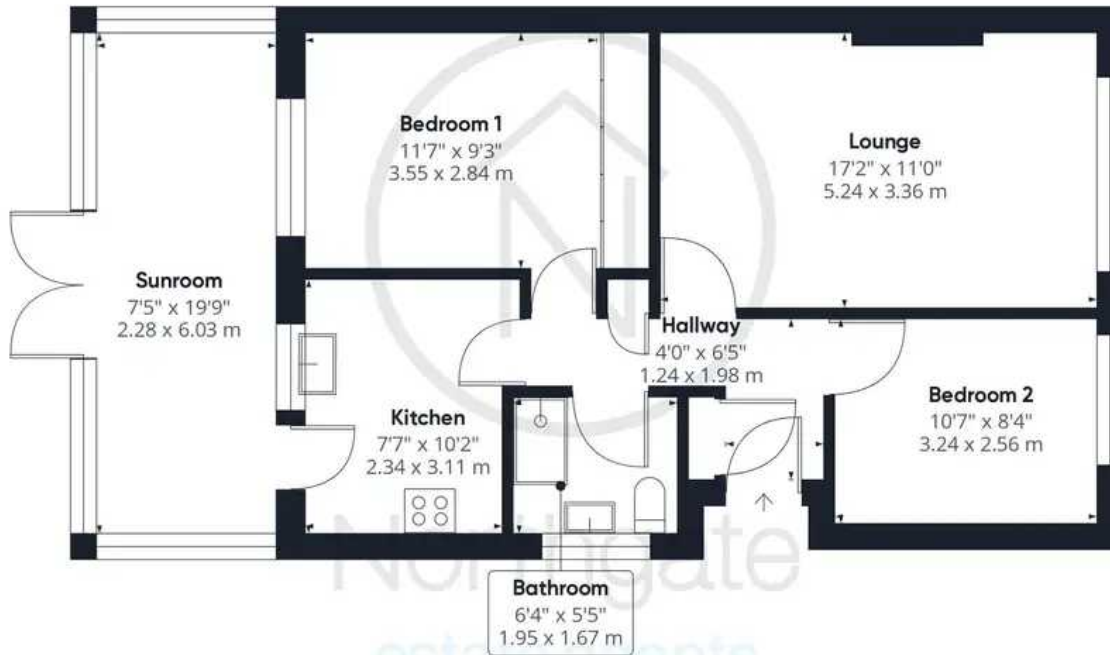
al staged for illustration purposes only



Northge
estate agat



Northgate
estate agents



Ground Floor Building 1

Approximate total area⁽¹⁾

882.17 ft²

81.96 m²



Ground Floor Building 2

(1) Excluding balconies and terraces

While every attempt has been made to ensure accuracy, all measurements are approximate, not to scale. This floor plan is for illustrative purposes only.

GIRAFFE360



Northgate - County Durham

Northgate Estate Agents, Suite 3 - DL5 4DH

01325 728333 • info@northgates.net • www.northgates.co.uk/



These particulars do not constitute, nor constitute part of, an offer or contract. No warranties are provided. Verify details through inspection. Northgate estate agents, nor any person in their employment has any authority to make or give any representation or warranty whatever in the relation to this property. All measurements are approximate.