



20 Cheltenham Way, Newton Aycliffe
Newton Aycliffe



Offers in Region of £260,000



20 Cheltenham Way

Newton Aycliffe, Newton Aycliffe

Introducing this exquisite four bedroom detached house located in a sought-after area in Woodham, Newton Aycliffe. This property offers a perfect blend of modern amenities and spacious living. Situated on a generous corner plot, this property provides ample natural light and a sense of openness throughout. The close proximity to local amenities ensures that daily conveniences are never far away. With an Energy Rating of D, this property offers both comfort and efficiency for the discerning homeowner.

The ground floor of the home comprises of a welcoming hallway leading to a spacious modern fitted kitchen/diner area, a ground floor WC and a spacious lounge with patio doors leading to the rear garden. The first floor of the home has a spacious landing leading to four bedrooms one of which benefits from an en-suite. A family bathroom caters for the other bedrooms.

Step outside to discover the impressive outdoor space that this property offers. The gardens provide a tranquil retreat, ideal for relaxing on lazy weekends or hosting gatherings with friends and family. The expansive grounds offer endless possibilities for outdoor activities, whether it's enjoying a morning cup of coffee on the patio or watching the children play in the spacious yard. With plenty of greenery and privacy, the outside space of this property is a true oasis in the heart of the neighbourhood, adding to the overall appeal and desirability of this stunning home. A garage offers extra parking or storage space for the property.

In summary, this four bedroom detached house is a home that offers both comfortable living spaces and a serene outdoor escape. Don't miss the opportunity to make this



Hallway

13' 9" x 5' 8" (4.19m x 1.73m)

Kitchen

26' 8" x 8' 9" (8.13m x 2.67m)

Garage

16' 6" x 8' 3" (5.03m x 2.51m)

Wc

5' 1" x 2' 6" (1.55m x 0.76m)

Living Room

12' 4" x 14' 8" (3.76m x 4.47m)

Landing

5' 6" x 9' 3" (1.68m x 2.82m)

Bedroom

11' 7" x 12' 10" (3.53m x 3.91m)

Bathroom

4' 7" x 8' 6" (1.40m x 2.59m)

Bedroom

9' 10" x 8' 6" (3.00m x 2.59m)

Bedroom

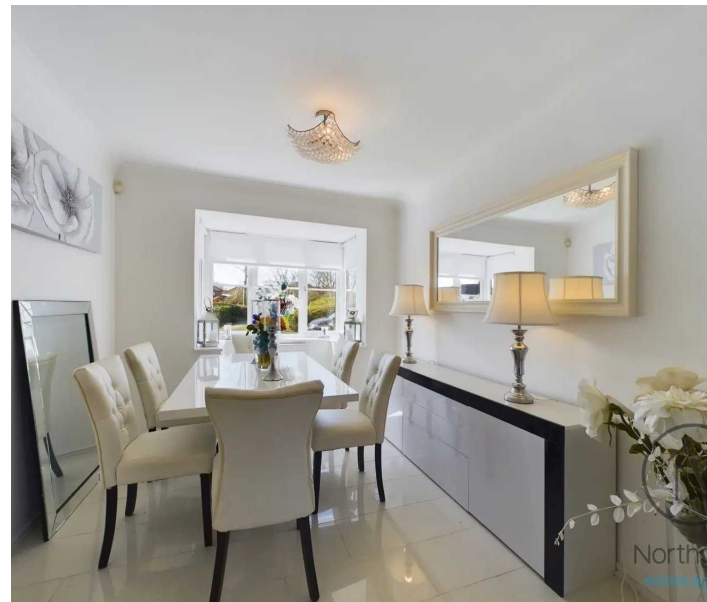
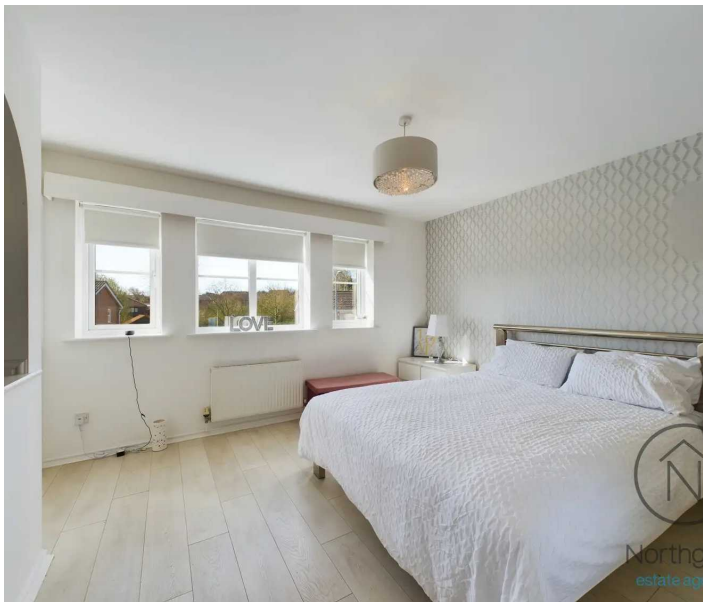
9' 11" x 7' 4" (3.02m x 2.24m)

Bedroom

8' 8" x 9' 1" (2.64m x 2.77m)

Bathroom

6' 9" x 6' 10" (2.06m x 2.08m)





GARDEN

GARAGE

Single Garage

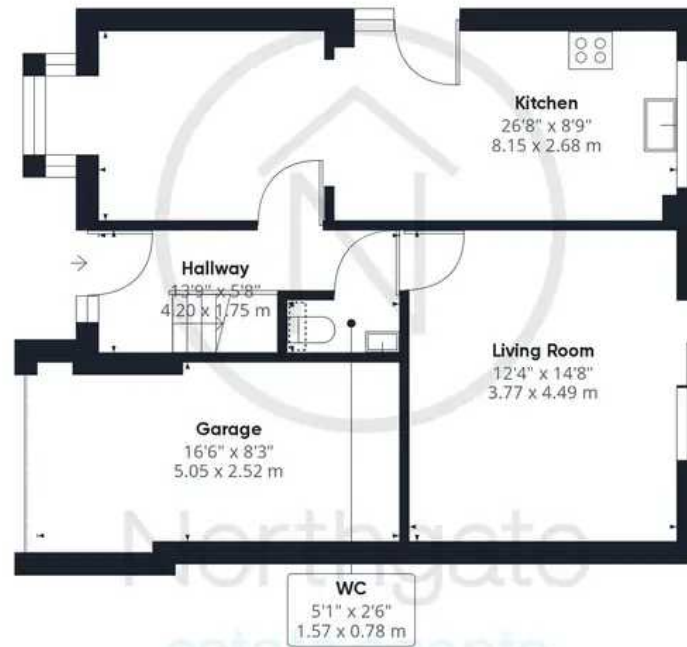
DRIVEWAY

2 Parking Spaces

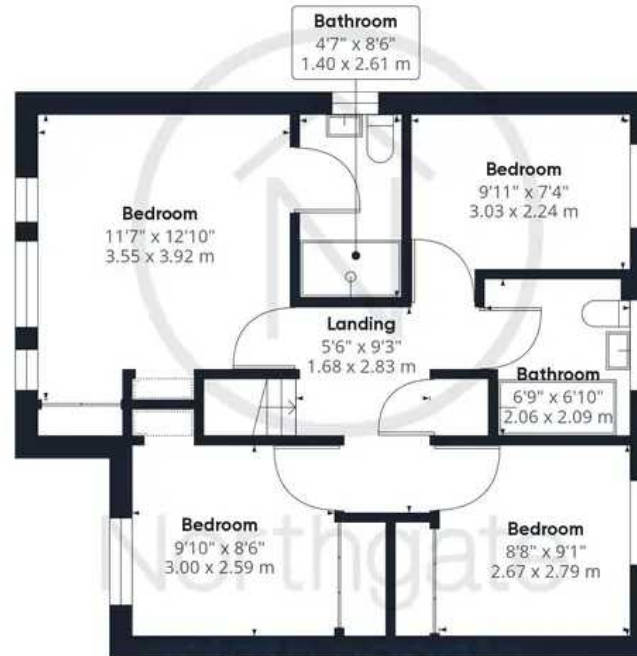




Northgate
estate agents



Ground Floor



Floor 1

Approximate total area⁽¹⁾

1214.27 ft²

112.81 m²

Reduced headroom

1.98 ft²

0.18 m²

(1) Excluding balconies and terraces

Reduced headroom
(below 1.5m/4.92ft)

While every attempt has been made to ensure accuracy, all measurements are approximate, not to scale. This floor plan is for illustrative purposes only.

GIRAFFE360



Northgate - County Durham

Northgate Estate Agents, Suite 3 - DL5 4DH

01325 728333 • info@northgates.net • www.northgates.co.uk/



These particulars do not constitute, nor constitute part of, an offer or contract. No warranties are provided. Verify details through inspection. Northgate estate agents, nor any person in their employment has any authority to make or give any representation or warranty whatever in the relation to this property. All measurements are approximate.