



# Yacley Close, Newton Aycliffe

Offers in Region of £135,000





## 7 Yacley Close

Newton Aycliffe, Newton Aycliffe

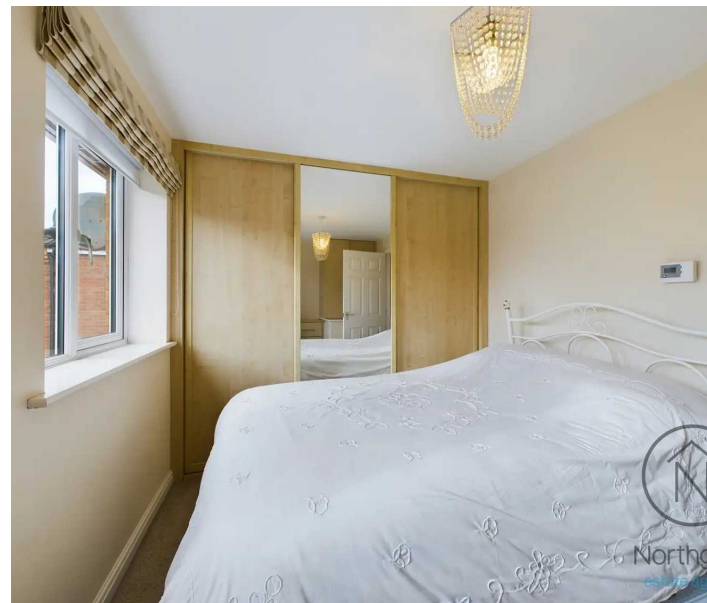
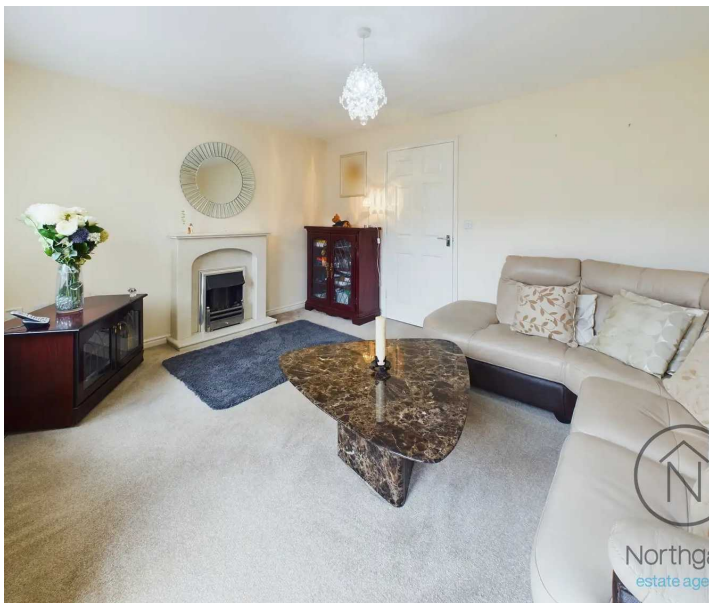
Three bedroom semi-detached family home on a modern estate, Please give us a call to book a viewing.

Council Tax band: B

Tenure: Freehold

EPC Energy Efficiency Rating: B

EPC Environmental Impact Rating: B



**Hallway**

16' 0" x 5' 3" (4.88m x 1.60m)

**Wc**

5' 3" x 2' 10" (1.60m x 0.86m)

**Living Room**

10' 9" x 13' 6" (3.28m x 4.11m)

**Kitchen/Diner**

14' 1" x 6' 6" (4.29m x 1.98m)

**Garage**

16' 8" x 8' 8" (5.08m x 2.64m)

**Landing**

9' 5" x 5' 11" (2.87m x 1.80m)

**Bedroom 1**

8' 1" x 11' 7" (2.46m x 3.53m)

**Bedroom 2**

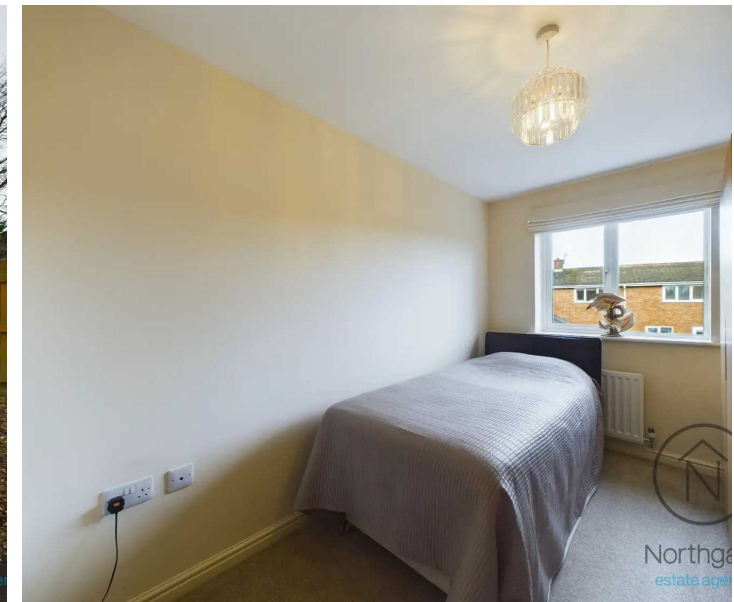
12' 5" x 7' 1" (3.78m x 2.16m)

**Bedroom 3**

8' 11" x 5' 11" (2.72m x 1.80m)

**Bathroom**

5' 11" x 7' 0" (1.80m x 2.13m)





Northgate  
estate agents



Ground Floor



Floor 1

Approximate total area<sup>(1)</sup>

836.12 ft<sup>2</sup>

77.68 m<sup>2</sup>

Reduced headroom

1.62 ft<sup>2</sup>

0.15 m<sup>2</sup>

(1) Excluding balconies and terraces

Reduced headroom  
(below 1.5m/4.92ft)

While every attempt has been made to ensure accuracy, all measurements are approximate, not to scale. This floor plan is for illustrative purposes only.

GIRAFFE360



