



19 Pease Way, Newton Aycliffe

Offers in Region of **£120,000**



19 Pease Way

Newton Aycliffe, Newton Aycliffe

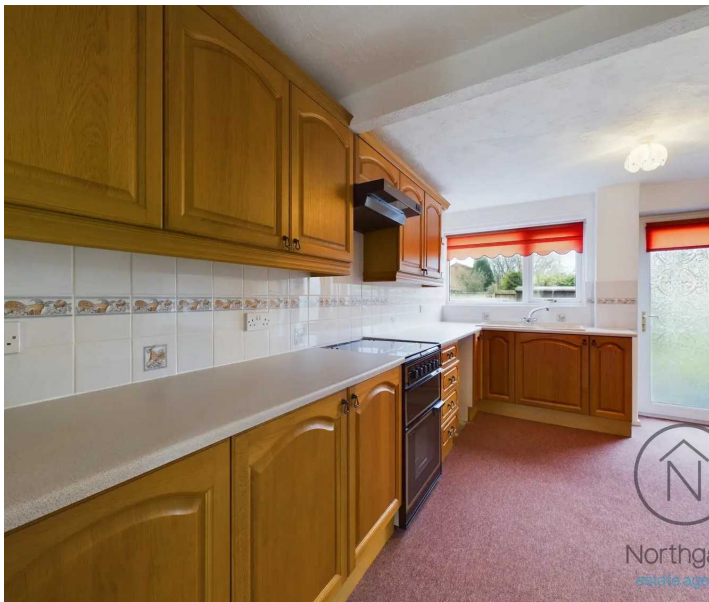
this charming 3-bedroom mid-terraced property is ideal for those seeking a comfortable and well-located home within easy reach of the town centre. The combination of spacious interiors, delightful rear garden, makes this house a truly enticing prospect for any discerning buyer.

Council Tax band: A

Tenure: Freehold

EPC Energy Efficiency Rating:

EPC Environmental Impact Rating:



Entrance Hall

8' 8" x 4' 8" (2.64m x 1.42m)

Lounge

12' 11" x 9' 9" (3.94m x 2.97m)

Dining Room

10' 9" x 9' 5" (3.28m x 2.87m)

Kitchen

11' 2" x 16' 3" (3.40m x 4.95m)

Landing

8' 11" x 2' 8" (2.72m x 0.81m)

Bathroom

8' 8" x 5' 4" (2.64m x 1.63m)

Bedroom 1

12' 11" x 9' 10" (3.94m x 3.00m)

Bedroom 2

11' 1" x 9' 6" (3.38m x 2.90m)

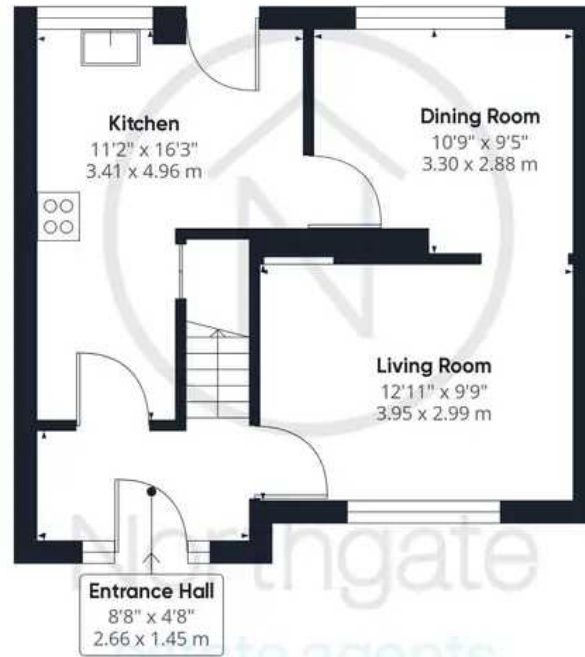
Bedroom 3

11' 3" x 6' 0" (3.43m x 1.83m)





Northgate
estate agents



Ground Floor

Approximate total area⁰

846.89 ft²

78.68 m²



Floor 1

Excluding balconies and terraces

While every attempt has been made to ensure accuracy, all measurements are approximate, not to scale. This floor plan is for illustrative purposes only.

GIRAFFE360



