



19 Wolsey Close, Newton Aycliffe  
Newton Aycliffe



In Excess of £90,000



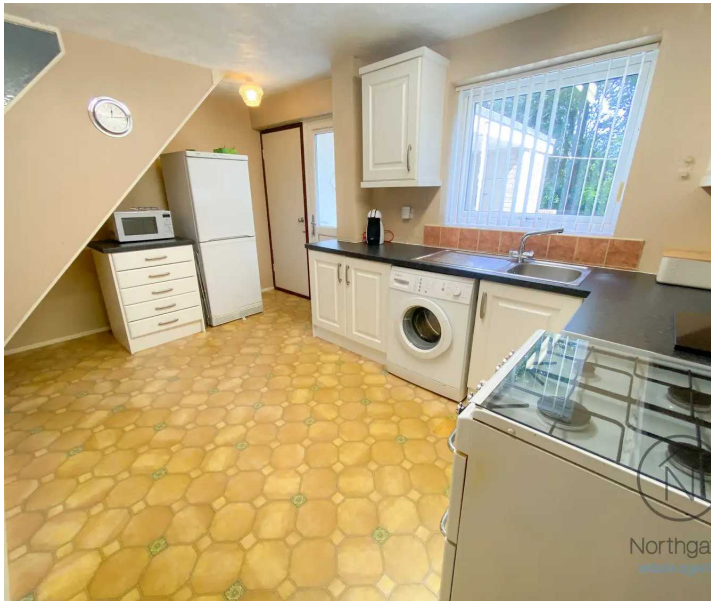
## 19 Wolsey Close

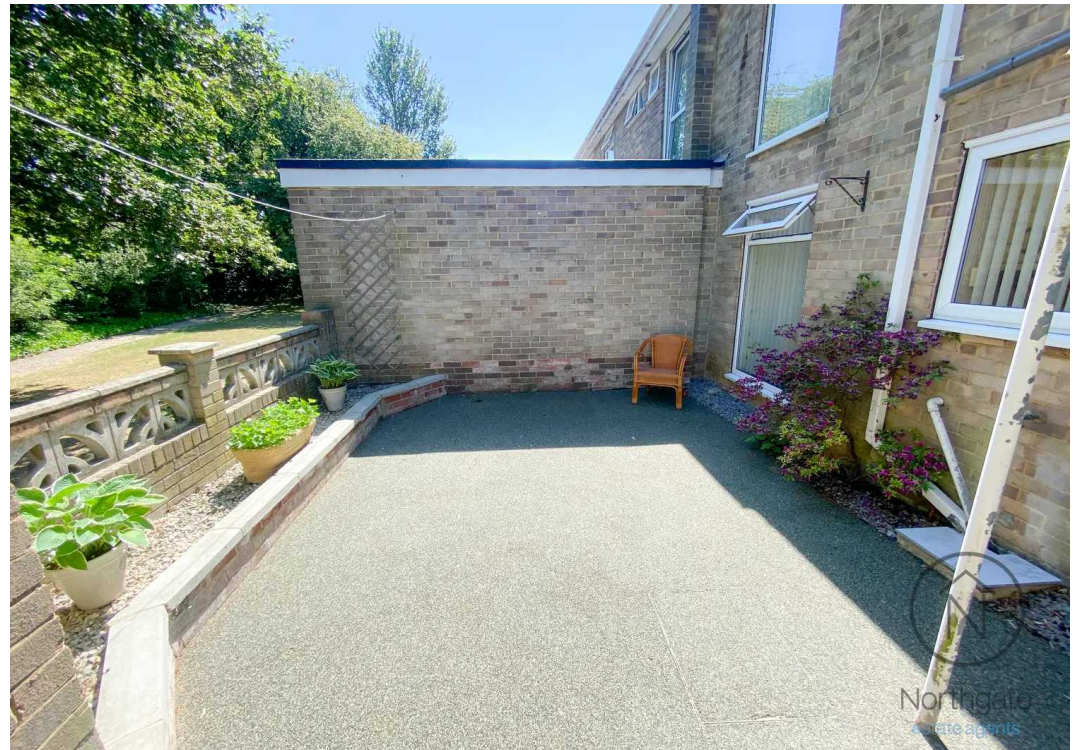
Newton Aycliffe, Newton Aycliffe

Offers invited between £90,000 to £100,000 - This three-bedroom mid-terrace property, located in the desirable Wolsey Close, offers great potential for buyers looking to create their dream home. The property is ideally located within the town of Newton Aycliffe, providing convenient access to a range of amenities. Situated close to schools, shops, and other essential services, it offers a desirable location for families and individuals alike. The property comprises a spacious entrance hall, leading to an open plan living room and dining room, providing ample space for entertaining. The kitchen is conveniently situated and includes a utility/storage room for added functionality. On the first floor, you will find a landing leading to two generous double bedrooms, Additionally, there is a single bedroom perfect for accommodating a growing family or creating a home office space. A family bathroom/WC with a shower over the bath, a pedestal wash hand basin, and a WC. Externally, the property features a lawn area to the front and a rear courtyard, offering an ideal low-maintenance outdoor space with pleasant views of surrounding trees. The house is equipped with a gas back boiler that serves both the heating and hot water systems. Furthermore, UPVC double glazing windows and doors. While the property has been well maintained, it would benefit from updating and refurbishment to reflect your personal style and taste. This presents an excellent opportunity for those seeking a renovation project to transform this house into a truly remarkable home. Don't miss out on the chance to own a property in this sought-after location. Contact us today to arrange a viewing and explore the potential that Wolsey Close has to offer.

Council Tax band: C

Tenure: Freehold







Northgate  
estate agents



Ground Floor



Floor 1

Approximate total area<sup>(1)</sup>

958.52 ft<sup>2</sup>

89.05 m<sup>2</sup>

Reduced headroom

11.27 ft<sup>2</sup>

1.05 m<sup>2</sup>

(1) Excluding balconies and terraces

⌊ Reduced headroom  
(below 1.5m/4.92ft)

While every attempt has been made to ensure accuracy, all measurements are approximate, not to scale. This floor plan is for illustrative purposes only.

GIRAFFE 360



## Northgate - County Durham

Northgate Estate Agents, Suite 3 - DL5 4DH

01325 728333 • [info@northgates.net](mailto:info@northgates.net) • [www.northgates.co.uk/](http://www.northgates.co.uk/)



These particulars do not constitute, nor constitute part of, an offer or contract. No warranties are provided. Verify details through inspection. Northgate estate agents, nor any person in their employment has any authority to make or give any representation or warranty whatever in the relation to this property. All measurements are approximate.