

BizSpace Newcastle Amber Court



Located in Newcastle Business Park and immediately outside of the historic Hadrian's Wall Path, our offices are arranged around a landscaped central courtyard, with the front of the building overlooking the river.

The building has recently benefited from a £2m refurbishment, including our brand new Business Lounge.

Highlights:



Riverside location



High-speed Internet



Air conditioning



Dedicated on-site team



On-site parking



Kitchen and breakout areas



Shower facilities



24-hour access



Co-working



Meeting rooms



Close transport links



Modern office furnishings



Large Spaces & Long Term

Conventional lease options available from 1,200 - 5,400 sq ft. From £25 per sq ft + vat.

Short Term & Flexible

Serviced offices provide an all-inclusive package. Workstations from £149+ vat per month.



Transport Links



Newcastle Central Station (1.5 miles)



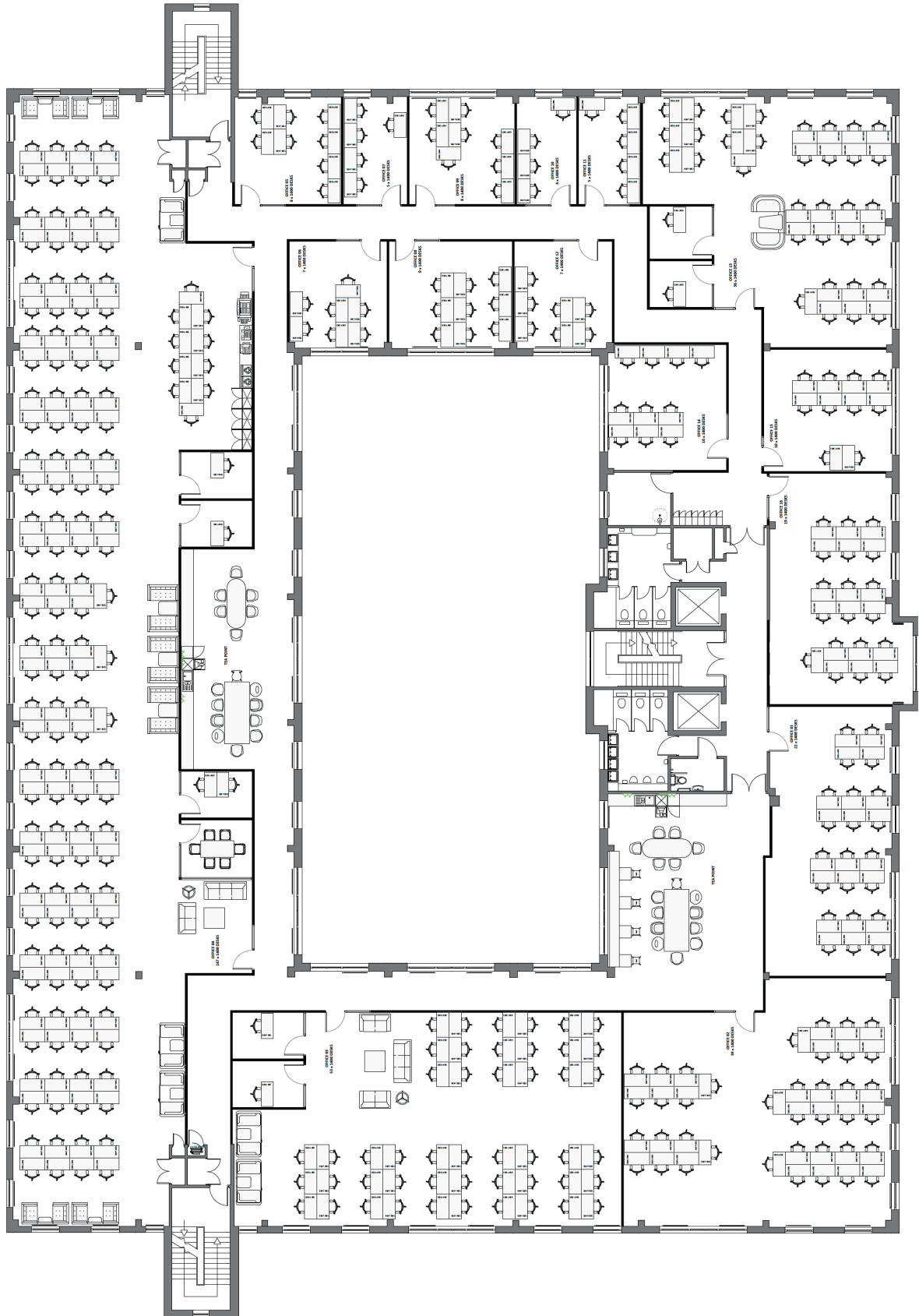
A1 (5 minutes)



Newcastle Airport (15 mins)

The centre has a communal breakout area and shared space, as well as free parking, an internal bike storage and shower facilities.

Our large space ranges from 790 - 18,000 sq ft, ideal for accommodating teams of up to 450 people.



**Biz
Space**

BizSpace Newcastle Amber Court

Amber Court
William Armstrong Drive
United Kingdom
NE4 7YA

Contact Lisa Atkinson

tel: 07471 995197

email: lisa.atkinson@bizspace.co.uk

