



Knollys Road, SW16

£375,000

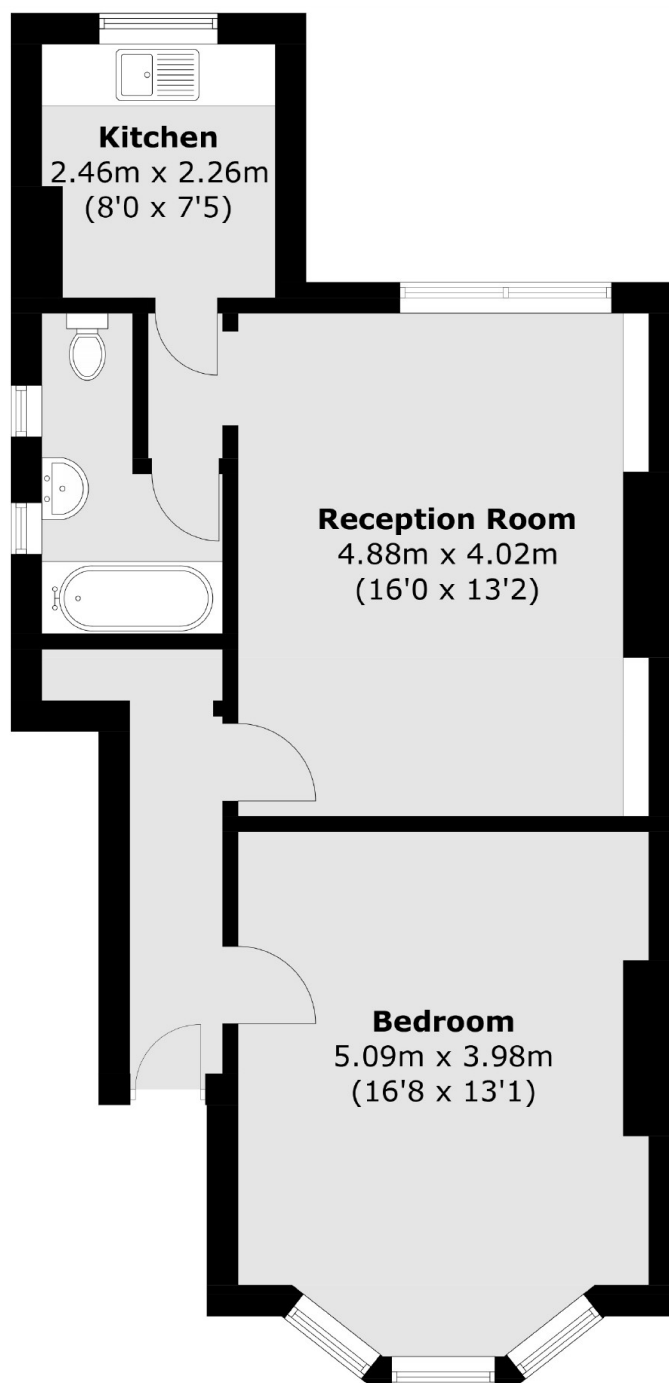
Located on the raised ground floor of this period conversion is this one double bedroom apartment. With tall ceilings and solid plenty of natural light throughout this property has a large main bedroom, spacious reception and separate kitchen as well as a private rear garden.

Knollys Road is located equidistant between Streatham and Tulse Hill with a great selection of local amenities on your door step including access to both Tulse Hill and Streatham Hill Mainline Stations providing frequent rail links into central London.

Features

- One Double Bedroom
- Period Conversion
- Private Garden
- Bright Flat
- Raised Ground Floor
- Share of Freehold

Knollys Road, London, SW16



Total area (approx.): 55.9 sq. m (601.7 sq. ft)