



## Streatham High Road, SW16

£475,000

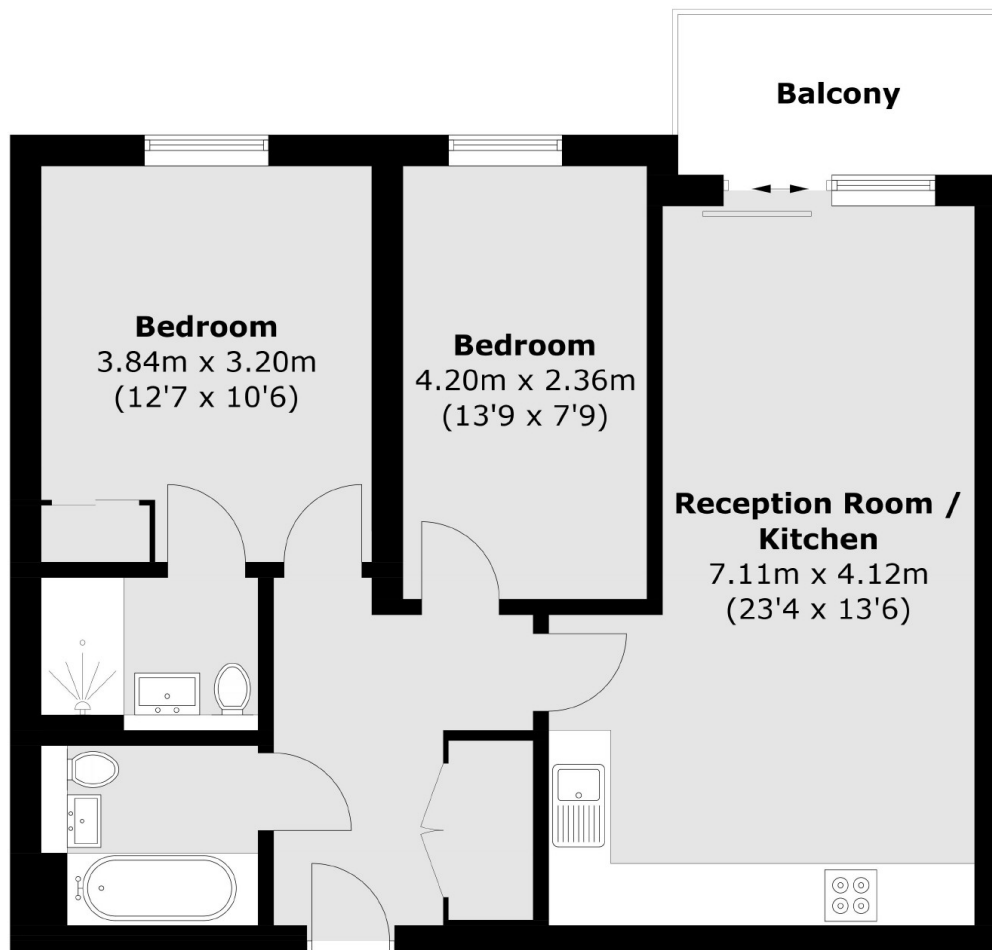
At over 700sqft this two double bedroom property is filled with natural light and has far reaching views. The open-plan living accommodation leads onto the south facing balcony where you sit and admire the beautiful views. The property has recently had air conditioning units installed and is in great condition throughout. The development benefits from a communal courtyard as well as a concierge and has no onward chain.

Derry Court is located close to Streatham mainline Train Station, perfect for access into the City. All your amenities are close including a number of large supermarkets, gym and a leisure centre. Streatham High Road also has a range of restaurant's and shops

### Features

- Two Double Bedrooms
- Close to Station
- Communal Courtyard
- South Facing Balcony
- Two Bathrooms
- Parking Space

# Streatham High Road, London, SW16



Total area (approx.): 65.5 sq. m (705.0 sq. ft)  
Balcony: 4.9 sq. m (52.7 sq. ft)