



Telford Avenue, SW2

£450,000

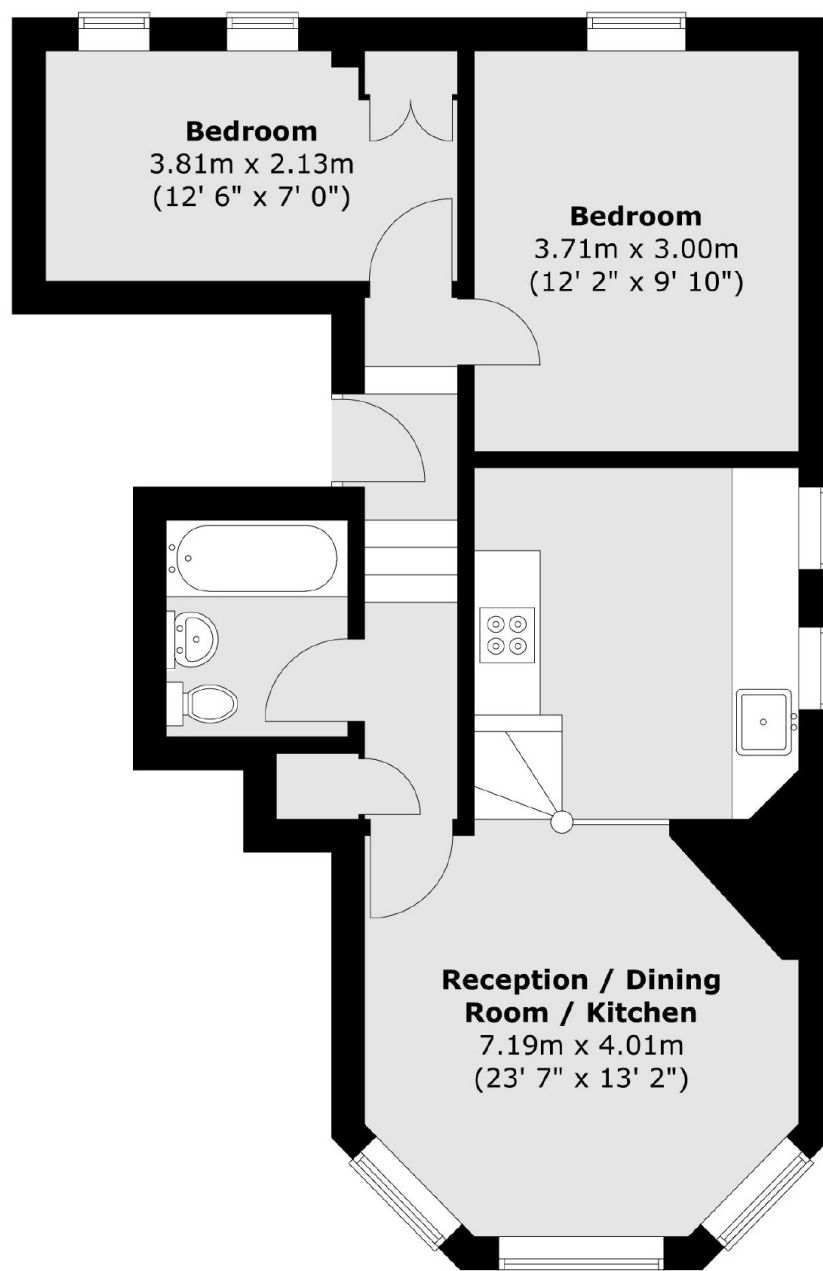
Located on a highly desirable street is this two double bedroom, split level, first floor flat. This home is full of period charm and features a large bay window in the living area and comes with a share in the freehold.

Telford Avenue is a highly sought after area located between Balham & Streatham within the well known Telford Park conservation area. Both Streatham Hill and Balham stations are easily accessible and provide links into the city.

Features

- Two Double Bedrooms
- Split-Level Layout
- Bright Flat
- Prime Location
- Share of Freehold
- Conservation Area

Telford Avenue, London, SW2



Total area (approx.) : 53.7 sq. m (578 sq. ft)