



Helmsdale Road, SW16

£1,750 Per calendar month

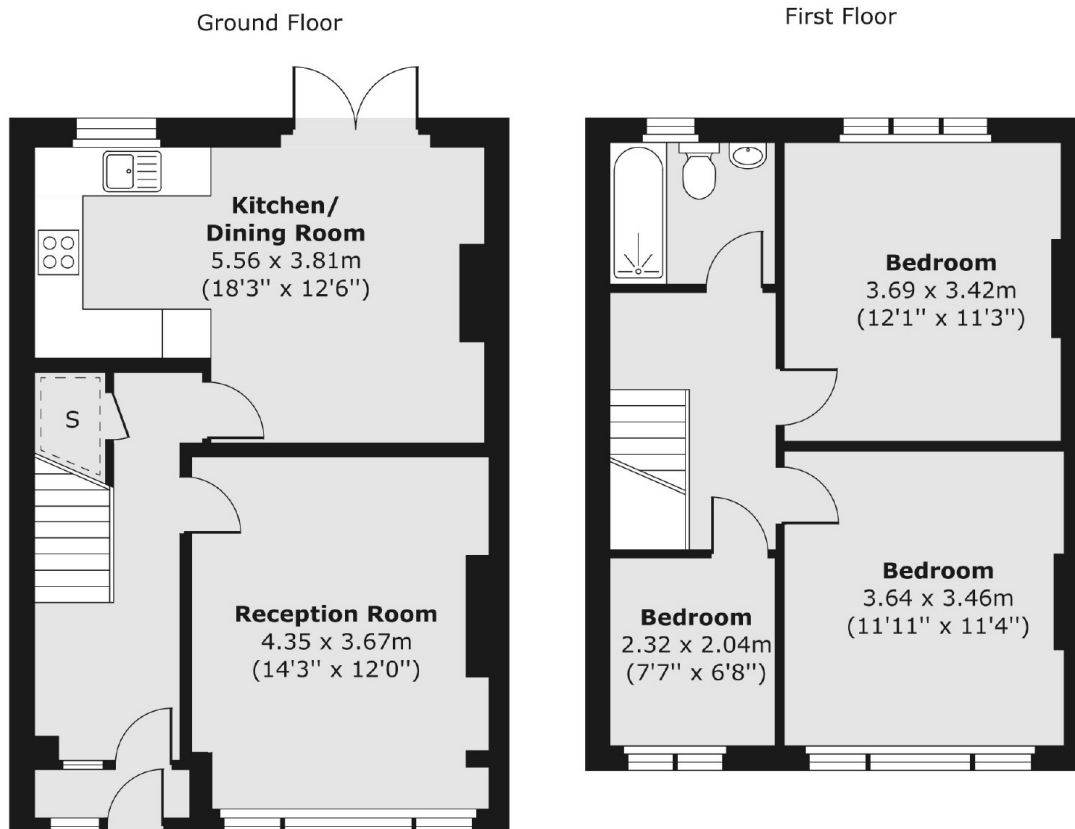
A three bedroom family home in a prime location. The property benefits from a separate living room, eat-in kitchen, three bedrooms and a modern bathroom. The property has a large garden and off-street parking.

Helmsdale Road is the ideal road to live on with amenities close by including Streatham Common station with superb transport links to Clapham Junction, London Bridge and London Victoria.

Features

- Three Bedroom House
- Separate Reception
- Eat-in Kitchen
- Wooden Flooring
- Private Garden
- Neutral Decor

Helmsdale Road, London, SW16



Total area (approx.) 87.77 sq. m (945 sq. ft)

Contact

To arrange a viewing call our office on the number below or visit our website.



Energy Rating: D. We aim to make our particulars both accurate and reliable. However they are not guaranteed; nor do they form part of an offer or contract. If you require clarification on any points then please contact us, especially if you're traveling some distance to view. Please note that appliances and heating systems have not been tested and therefore no warranties can be given as to their good working order.