



Streatham High Road, SW16

£475,000

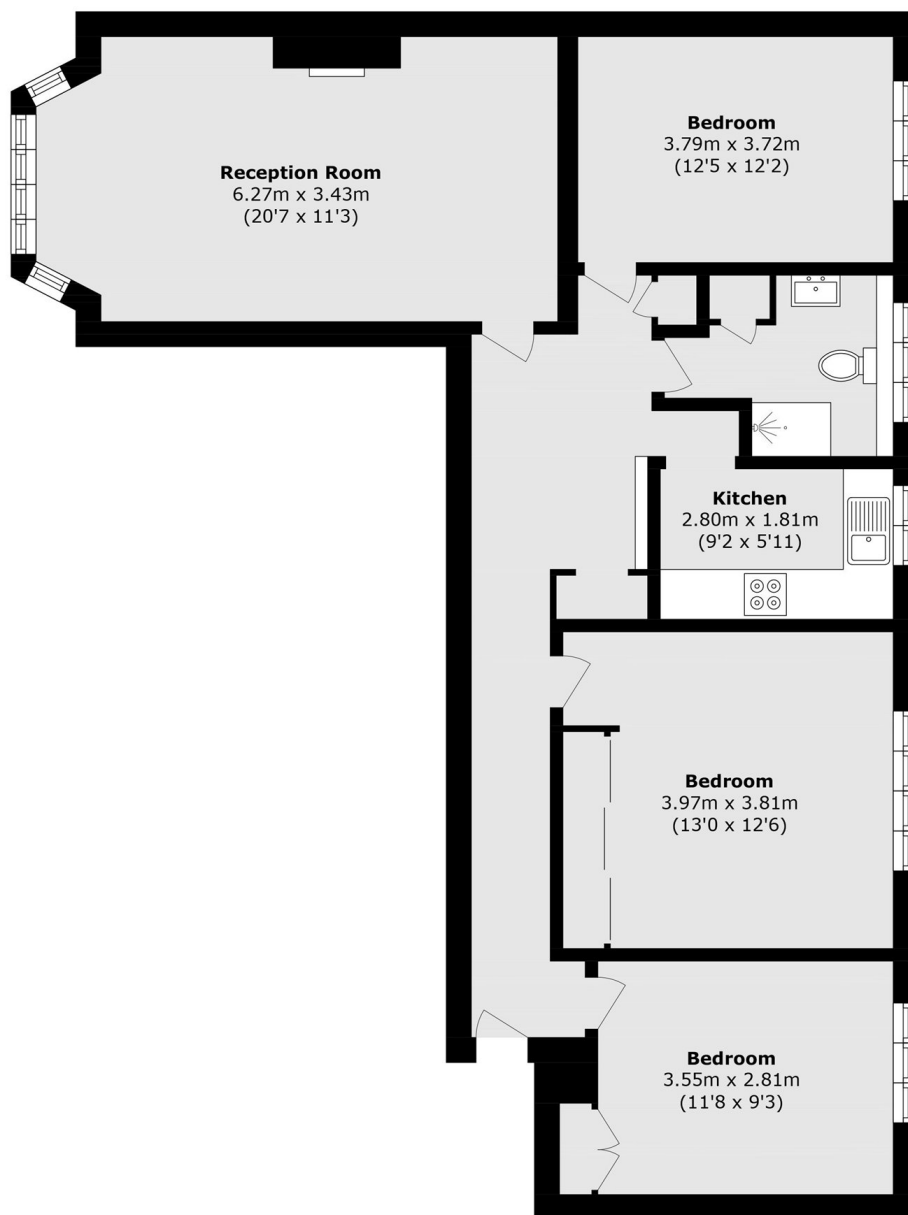
Enviably situated in a desirable mansion block in the heart of Streatham, this stunning three-double-bedroom apartment offers over 920 sq ft of generous living space. The property benefits from a separate kitchen and a large reception room, and is being offered to the market with no onward chain.

Perfectly positioned along Streatham High Road, The High is ideally located within close proximity to both Streatham Hill and Streatham mainline stations, as well as numerous bus routes, providing quick and easy access into Brixton.

Features

- Three Double Bedrooms
- Separate Kitchen
- Communal Gardens
- Large Reception Room
- Over 920 Sq Ft
- Chain Free

Streatham High Road, London, SW16



Total area (approx.): 85.6 sq. m (921.3 sq. ft)

Dexters

Streatham
105 Streatham Hill
London
SW2 4UG
Sales
020 8674 7400

Energy Rating: C. We aim to make our particulars both accurate and reliable. However they are not guaranteed; nor do they form part of an offer or contract. If you require clarification on any points then please contact us, especially if you're traveling some distance to view. Please note that appliances and heating systems have not been tested and therefore no warranties can be given as to their good working order.

 **RICS** | Regulated
Estate Agent
and Letting Agent

[dexters.co.uk](https://www.dexters.co.uk)