

## Thornton Avenue, SW2

£2,600 Per calendar month

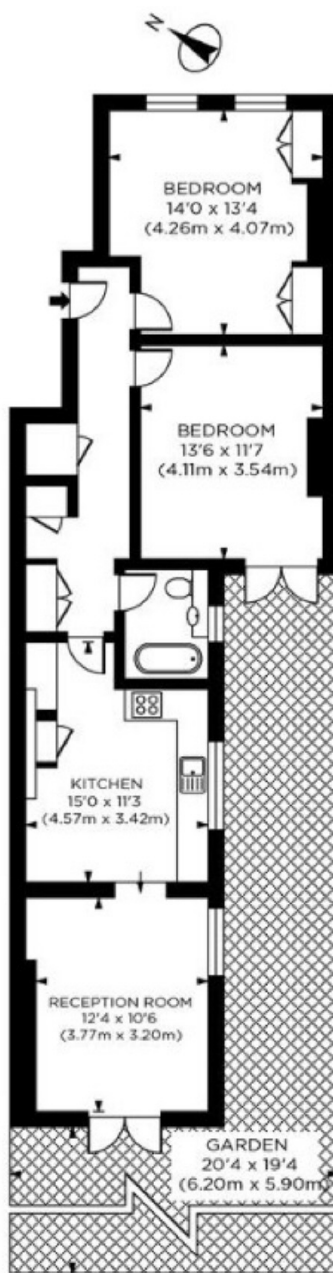
Located between Balham and Streatham this two bedroom garden flat features a large private garden and home office. With high ceilings and large bay window this living space is open to the kitchen and feels secluded due to the mature front garden.

Thornton Avenue is positioned in the highly desirable Telford Park conservation area, which is known for its grand period properties and great location bordering Balham, Streatham and Tooting Bec Common. Great transport links, with Balham and Streatham Hill stations only a walk away.

### Features

- Ground Floor Flat
- Two Double Bedrooms
- Eat-in Kitchen
- Separate Reception
- Modern Bathroom
- Private Garden

# Thornton Avenue, London, SW2



GROUND FLOOR

Thornton Avenue, SW2  
Gross Internal Area 839 sq ft/78 sq metres  
©photosandfloorplans.com

## Dexters

Streatham  
105 Streatham Hill  
London  
SW2 4UG  
Lettings  
020 8674 8400

Energy Rating: . We aim to make our particulars both accurate and reliable. However they are not guaranteed; nor do they form part of an offer or contract. If you require clarification on any points then please contact us, especially if you're traveling some distance to view. Please note that appliances and heating systems have not been tested and therefore no warranties can be given as to their good working order.

 **RICS** | Regulated  
Estate Agent  
and Letting Agent

dexters.co.uk