



Lewin Road, SW16

£450,000

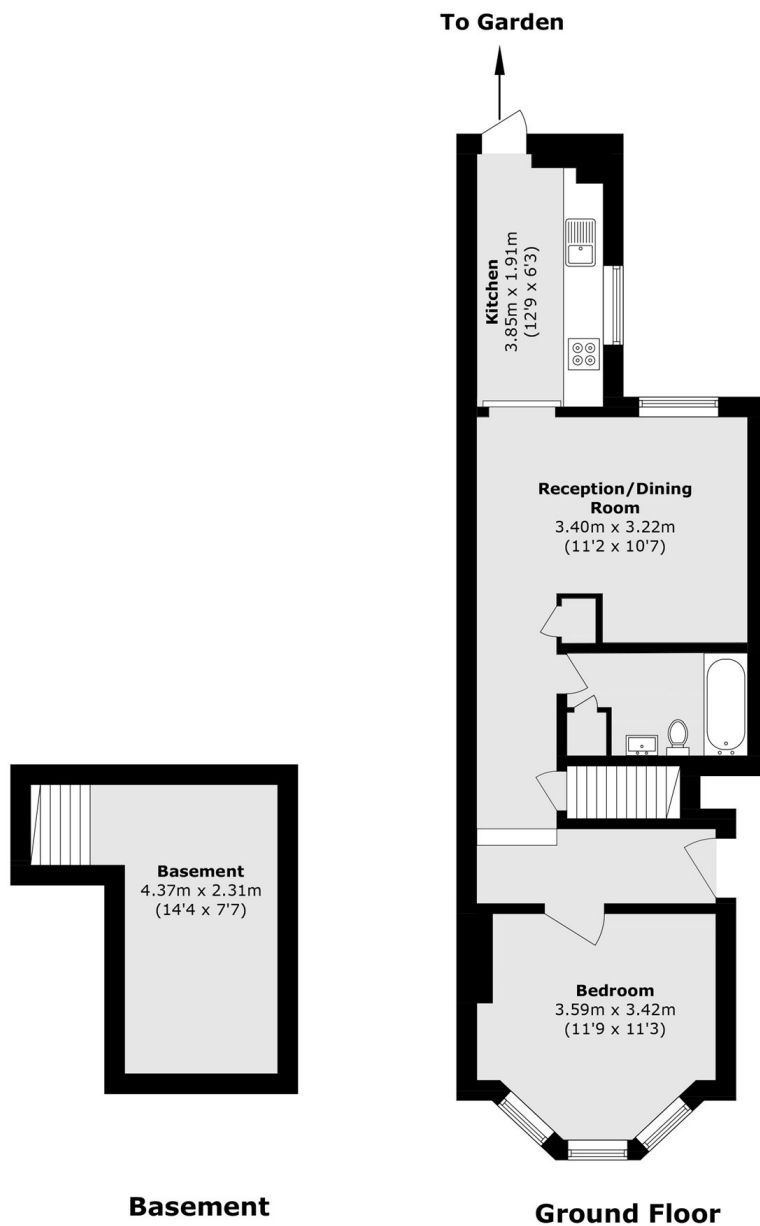
This beautifully presented and bright one double bedroom period property is offered in immaculate condition throughout. The home features a spacious double bedroom, a separate living room and kitchen, and direct access to a private garden, perfect for outdoor dining and relaxation. Combining classic period character with modern finishes, this property offers a wonderful sense of space and light, making it an ideal home for first-time buyers or those seeking a stylish London base.

Located on a prime residential street off Streatham Common, the property enjoys easy access to excellent transport links providing direct connections into The City and the West End. The open green spaces of Streatham Common and a range of local cafés, shops, and amenities are all within easy reach.

Features

- One Double Bedroom
- Private Garden/Direct Access
- Beautifully presented throughout
- Separate Living Room/Kitchen
- No Onward Chain

Lewin Road,
London, SW16



Basement

Ground Floor

Total area (approx.): 59.2 sq. m (637.2 sq. ft)

Dexters

Streatham
105 Streatham Hill
London
SW2 4UG
Sales
020 8674 7400

Energy Rating: D. We aim to make our particulars both accurate and reliable. However they are not guaranteed; nor do they form part of an offer or contract. If you require clarification on any points then please contact us, especially if you're traveling some distance to view. Please note that appliances and heating systems have not been tested and therefore no warranties can be given as to their good working order.

 **RICS** | Regulated
Estate Agent
and Letting Agent

[dexters.co.uk](https://www.dexters.co.uk)