



Barrow Road, SW16

£450,000

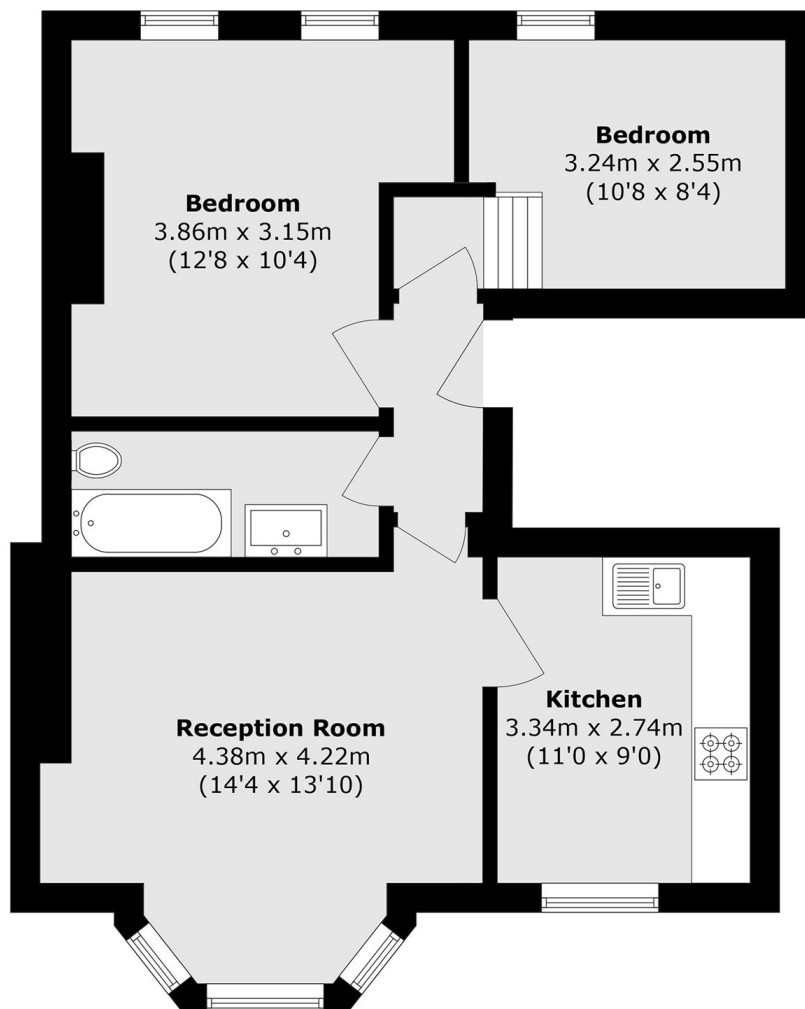
OFFERS OVER: A beautifully presented two double bedroom period property with a private garden, offering an excellent blend of charm and modern comfort. The home features two generous double bedrooms, a large and bright reception room, and a separate kitchen, providing well-balanced living space throughout.

Located on a prime residential street off Streatham Common, the property enjoys easy access to excellent transport links providing direct connections into The City and the West End. The open green spaces of Streatham Common and a range of local cafés, shops, and amenities are all within easy reach.

Features

- Two Double Bedrooms
- Private Garden
- Beautifully presented throughout
- Separate Kitchen
- Period Property
- Share Of Freehold

Barrow Road,
London, SW16



Total area (approx.): 56.6 sq. m (609.2 sq. ft)

Dexters

Streatham
105 Streatham Hill
London
SW2 4UG
Sales
020 8674 7400

Energy Rating: C. We aim to make our particulars both accurate and reliable. However they are not guaranteed; nor do they form part of an offer or contract. If you require clarification on any points then please contact us, especially if you're traveling some distance to view. Please note that appliances and heating systems have not been tested and therefore no warranties can be given as to their good working order.

 **RICS** | Regulated
Estate Agent
and Letting Agent

[dexters.co.uk](https://www.dexters.co.uk)