



**Streatham Vale, SW16**

**£675,000**

**Dexters**



## Streatham Vale, SW16

Spread over three floors is this four bedroom family home located within walking distance to Streatham Common Station. With rear extension already completed, this family home has a large kitchen/diner family room, separate reception and downstairs shower room. The rear garden is paved and features an outbuilding which houses an extra kitchen space and storage.

Upstairs there are four bedrooms and a family bathroom three are large doubles whilst the fourth can be used as a study or nursery. There is also plenty of storage in the eaves as well as off street parking and the property has the added bonus of no onward chain.

This property is situated in Streatham Vale close to Streatham Common and Streatham Common Station which takes you directly to London Victoria and London Bridge. Good schools and local shops are also nearby as well as great pubs and coffee shops.

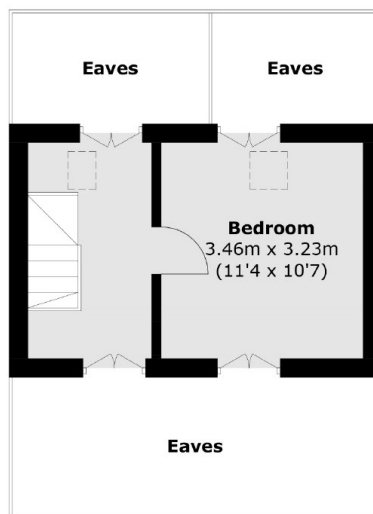
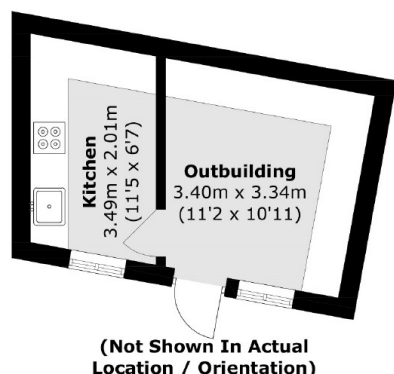
### Features

- Four Bedrooms
- Off-Street Parking
- Outbuilding
- Two Bathrooms
- Chain Free
- Close to Station

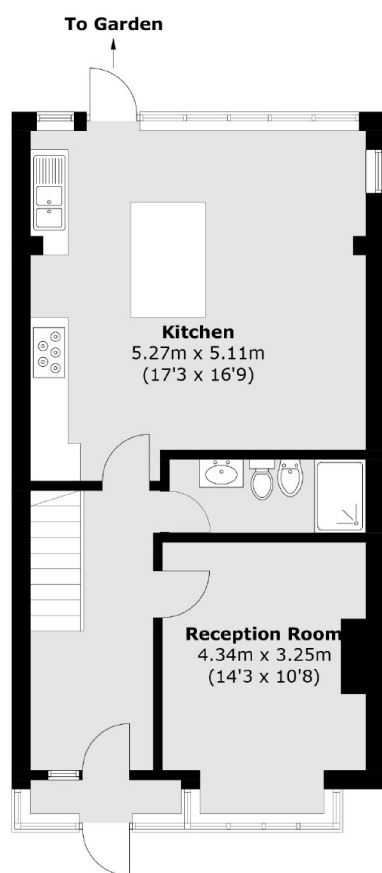




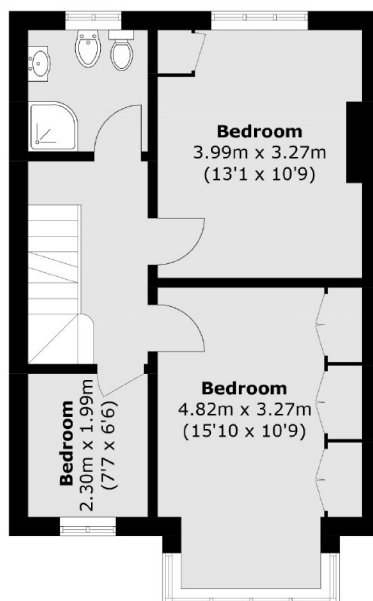
# Streatham Vale, London, SW16



**Second Floor**



**Ground Floor**



**First Floor**

Total area (approx.): 121.7 sq. m (1,310.0 sq. ft)  
(Excluding Eaves)  
Outbuilding : 17.5 sq. m (188.4 sq. ft)