

Greyhound Lane, SW16

£400,000

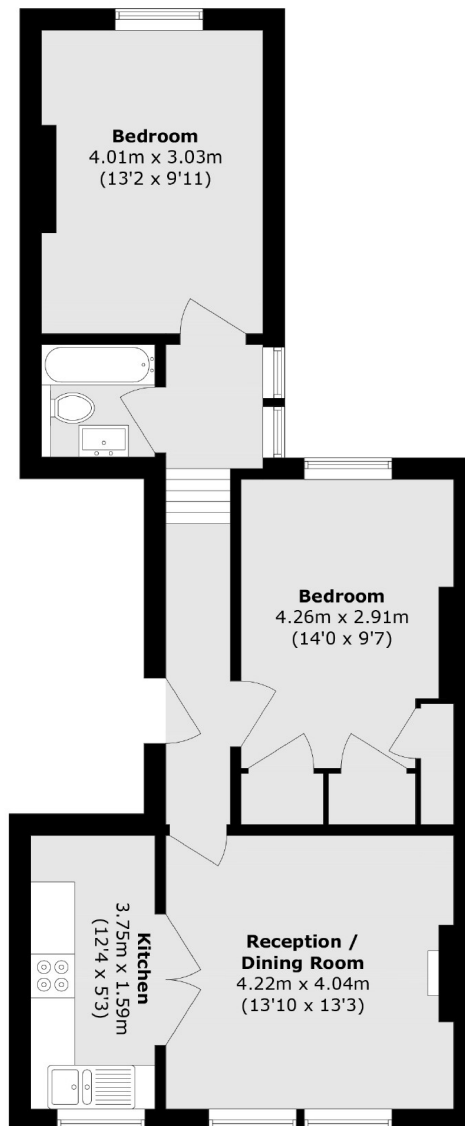
A first floor, period conversion with two double bedrooms and spacious reception. This property has a bright reception with feature fireplace and large windows, leading through the double doors to the separate kitchen. Both bedrooms are rear facing and accessed via a split level hallway, leading also to the modern bathroom.

Greyhound Lane is perfectly placed for Streatham Common and Streatham's busy town centre as well as the common itself which houses The Rookery Gardens . Additionally, it is situated equidistant between Streatham Mainline and Streatham Common stations which provide frequent rail links to the city.

Features

- Two Double Bedrooms
- Close to Station
- High Ceilings
- Bright Flat
- Long Lease
- Good Location

Greyhound Lane, London, SW16



Total area (approx.): 59.0 sq. m (635.0 sq. ft)

Dexters

Streatham
105 Streatham Hill
London
SW2 4UG
Sales
020 8674 7400

Energy Rating: C. We aim to make our particulars both accurate and reliable. However they are not guaranteed; nor do they form part of an offer or contract. If you require clarification on any points then please contact us, especially if you're traveling some distance to view. Please note that appliances and heating systems have not been tested and therefore no warranties can be given as to their good working order.

 **RICS** | Regulated
Estate Agent
and Letting Agent

[dexters.co.uk](https://www.dexters.co.uk)