



Gipsy Hill, SE19

£2,000 Per calendar month

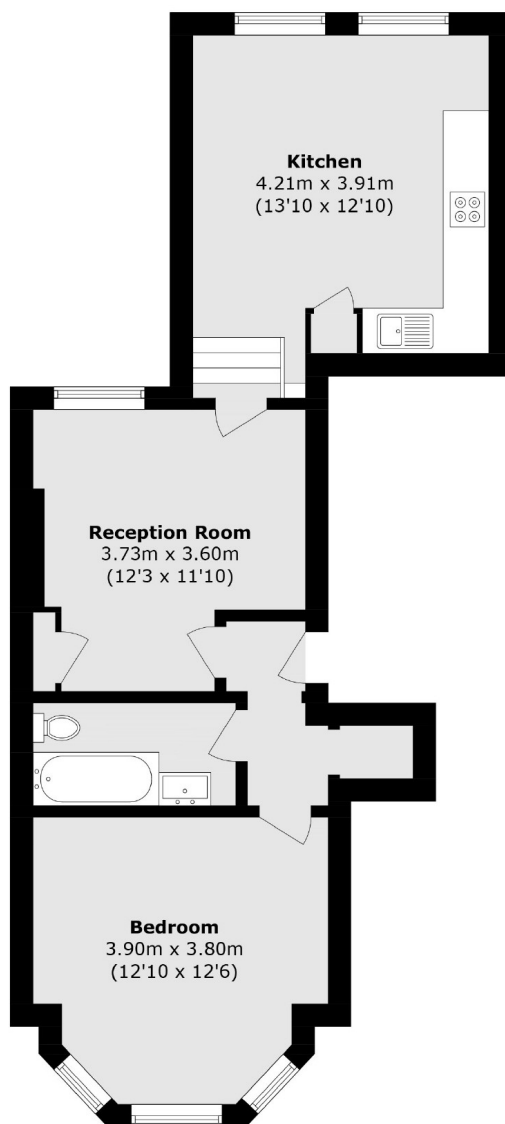
This large one bedroom property is based in a beautiful double fronted period converted building. The property has a great entertaining space with a large eat in kitchen and separate reception. The property also has a large communal garden.

The property is 0.2 miles from Gipsy Hill Station and 0.6 miles from Crystal Place Station, plus you are less than 10 minutes from Crystal Place Park.

Features

- One Bedroom
- First Floor
- Separate Eat In Kitchen
- Large Bedroom
- Communal Rear Garden
- Period Conversion

Gipsy Hill, London, SE19



Total area (approx.): 51.2 sq. m (551.1 sq. ft)