



Gaumont Place, SW2

£450,000

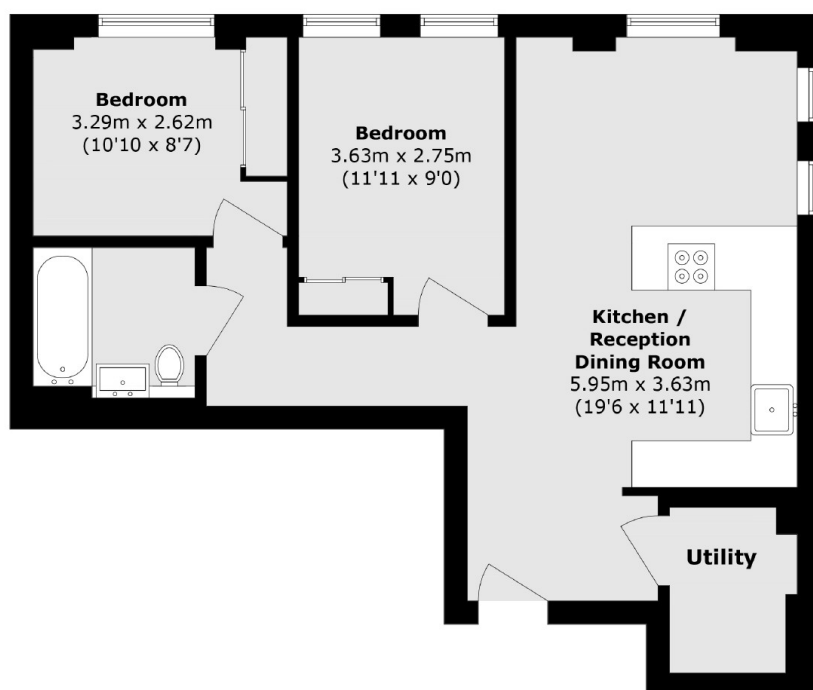
A beautifully presented two double bedroom apartment set in this sought after development which offers a gym, concierge and well kept communal grounds. This stylish property also benefits from being filled with natural light, air conditioning, is surrounded by amazing views and a large open plan living/kitchen area. Potential for an underground secure car parking space to be included.

A range of amenities and facilities in Streatham Hill are on your doorstep with very frequent buses into Brixton, Clapham and surrounding areas. Links into Clapham Junction, Victoria and London Bridge are also nearby as well as open green spaces such as Tooting Bec Common.

Features

- Two Double Bedrooms
- Large Communal Gardens
- Gated Development
- Far Reaching Views
- Gym
- Air Conditioning Unit

Gaumont Place, London, SW2



Total area (approx.): 59.3 sq. m (638.3 sq. ft)